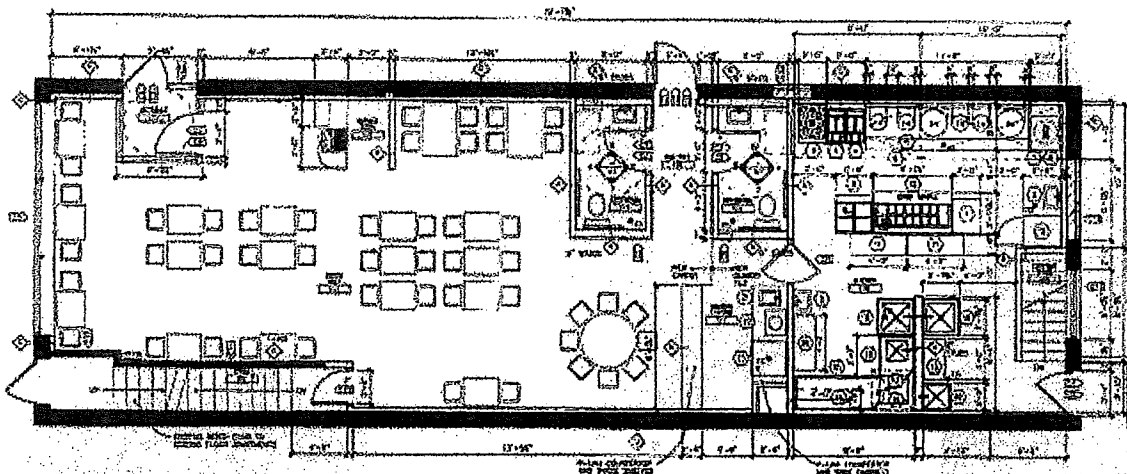


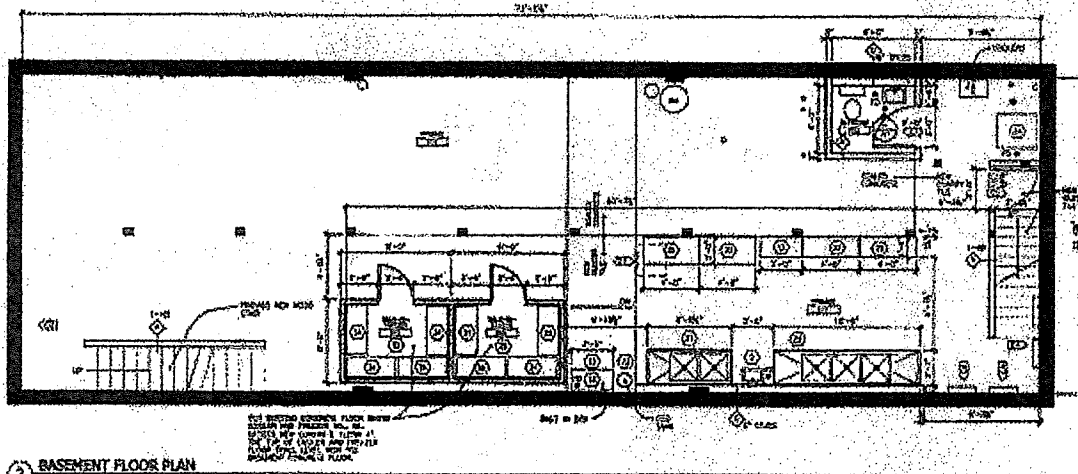
Signature

X Karla L. Marta Mejia

01-26-24



1 FIRST FLOOR PLAN  
DATE 1/15/24



2 BASEMENT FLOOR PLAN  
DATE 1/15/24

**CONSTRUCTION NOTES**

1. ALL WORK SHALL BE DONE IN ACCORDANCE WITH THE CITY OF ST. PAUL, MINN. CODES AND ORDINANCES.
2. ALL WORK SHALL BE DONE IN ACCORDANCE WITH THE CITY OF ST. PAUL, MINN. CODES AND ORDINANCES.
3. ALL WORK SHALL BE DONE IN ACCORDANCE WITH THE CITY OF ST. PAUL, MINN. CODES AND ORDINANCES.
4. ALL WORK SHALL BE DONE IN ACCORDANCE WITH THE CITY OF ST. PAUL, MINN. CODES AND ORDINANCES.
5. ALL WORK SHALL BE DONE IN ACCORDANCE WITH THE CITY OF ST. PAUL, MINN. CODES AND ORDINANCES.
6. ALL WORK SHALL BE DONE IN ACCORDANCE WITH THE CITY OF ST. PAUL, MINN. CODES AND ORDINANCES.
7. ALL WORK SHALL BE DONE IN ACCORDANCE WITH THE CITY OF ST. PAUL, MINN. CODES AND ORDINANCES.
8. ALL WORK SHALL BE DONE IN ACCORDANCE WITH THE CITY OF ST. PAUL, MINN. CODES AND ORDINANCES.
9. ALL WORK SHALL BE DONE IN ACCORDANCE WITH THE CITY OF ST. PAUL, MINN. CODES AND ORDINANCES.
10. ALL WORK SHALL BE DONE IN ACCORDANCE WITH THE CITY OF ST. PAUL, MINN. CODES AND ORDINANCES.
11. ALL WORK SHALL BE DONE IN ACCORDANCE WITH THE CITY OF ST. PAUL, MINN. CODES AND ORDINANCES.
12. ALL WORK SHALL BE DONE IN ACCORDANCE WITH THE CITY OF ST. PAUL, MINN. CODES AND ORDINANCES.
13. ALL WORK SHALL BE DONE IN ACCORDANCE WITH THE CITY OF ST. PAUL, MINN. CODES AND ORDINANCES.
14. ALL WORK SHALL BE DONE IN ACCORDANCE WITH THE CITY OF ST. PAUL, MINN. CODES AND ORDINANCES.
15. ALL WORK SHALL BE DONE IN ACCORDANCE WITH THE CITY OF ST. PAUL, MINN. CODES AND ORDINANCES.
16. ALL WORK SHALL BE DONE IN ACCORDANCE WITH THE CITY OF ST. PAUL, MINN. CODES AND ORDINANCES.
17. ALL WORK SHALL BE DONE IN ACCORDANCE WITH THE CITY OF ST. PAUL, MINN. CODES AND ORDINANCES.
18. ALL WORK SHALL BE DONE IN ACCORDANCE WITH THE CITY OF ST. PAUL, MINN. CODES AND ORDINANCES.
19. ALL WORK SHALL BE DONE IN ACCORDANCE WITH THE CITY OF ST. PAUL, MINN. CODES AND ORDINANCES.
20. ALL WORK SHALL BE DONE IN ACCORDANCE WITH THE CITY OF ST. PAUL, MINN. CODES AND ORDINANCES.

**TIAN JIN RESTAURANT**

1552 COMO AVENUE  
ST. PAUL, MN

**EQUIPMENT LIST**

NO.	DESCRIPTION	QUANTITY	MAKE	MODEL	EST.
1	GRILL	1	NEW	FRIGIDAIRE	1500
2	WARMER	1	NEW	FRIGIDAIRE	1500
3	WARMER	1	NEW	FRIGIDAIRE	1500
4	WARMER	1	NEW	FRIGIDAIRE	1500
5	WARMER	1	NEW	FRIGIDAIRE	1500
6	WARMER	1	NEW	FRIGIDAIRE	1500
7	WARMER	1	NEW	FRIGIDAIRE	1500
8	WARMER	1	NEW	FRIGIDAIRE	1500
9	WARMER	1	NEW	FRIGIDAIRE	1500
10	WARMER	1	NEW	FRIGIDAIRE	1500
11	WARMER	1	NEW	FRIGIDAIRE	1500
12	WARMER	1	NEW	FRIGIDAIRE	1500
13	WARMER	1	NEW	FRIGIDAIRE	1500
14	WARMER	1	NEW	FRIGIDAIRE	1500
15	WARMER	1	NEW	FRIGIDAIRE	1500
16	WARMER	1	NEW	FRIGIDAIRE	1500
17	WARMER	1	NEW	FRIGIDAIRE	1500
18	WARMER	1	NEW	FRIGIDAIRE	1500
19	WARMER	1	NEW	FRIGIDAIRE	1500
20	WARMER	1	NEW	FRIGIDAIRE	1500
21	WARMER	1	NEW	FRIGIDAIRE	1500
22	WARMER	1	NEW	FRIGIDAIRE	1500
23	WARMER	1	NEW	FRIGIDAIRE	1500
24	WARMER	1	NEW	FRIGIDAIRE	1500
25	WARMER	1	NEW	FRIGIDAIRE	1500
26	WARMER	1	NEW	FRIGIDAIRE	1500
27	WARMER	1	NEW	FRIGIDAIRE	1500
28	WARMER	1	NEW	FRIGIDAIRE	1500
29	WARMER	1	NEW	FRIGIDAIRE	1500
30	WARMER	1	NEW	FRIGIDAIRE	1500
31	WARMER	1	NEW	FRIGIDAIRE	1500
32	WARMER	1	NEW	FRIGIDAIRE	1500
33	WARMER	1	NEW	FRIGIDAIRE	1500
34	WARMER	1	NEW	FRIGIDAIRE	1500
35	WARMER	1	NEW	FRIGIDAIRE	1500
36	WARMER	1	NEW	FRIGIDAIRE	1500
37	WARMER	1	NEW	FRIGIDAIRE	1500
38	WARMER	1	NEW	FRIGIDAIRE	1500
39	WARMER	1	NEW	FRIGIDAIRE	1500
40	WARMER	1	NEW	FRIGIDAIRE	1500
41	WARMER	1	NEW	FRIGIDAIRE	1500
42	WARMER	1	NEW	FRIGIDAIRE	1500
43	WARMER	1	NEW	FRIGIDAIRE	1500
44	WARMER	1	NEW	FRIGIDAIRE	1500
45	WARMER	1	NEW	FRIGIDAIRE	1500
46	WARMER	1	NEW	FRIGIDAIRE	1500
47	WARMER	1	NEW	FRIGIDAIRE	1500
48	WARMER	1	NEW	FRIGIDAIRE	1500
49	WARMER	1	NEW	FRIGIDAIRE	1500
50	WARMER	1	NEW	FRIGIDAIRE	1500

**REVISION HISTORY - THIS SHEET**

NO.	DESCRIPTION	DATE
1	ISSUED FOR PERMIT	1/15/24
2	ISSUED FOR PERMIT	1/15/24
3	ISSUED FOR PERMIT	1/15/24
4	ISSUED FOR PERMIT	1/15/24
5	ISSUED FOR PERMIT	1/15/24
6	ISSUED FOR PERMIT	1/15/24
7	ISSUED FOR PERMIT	1/15/24
8	ISSUED FOR PERMIT	1/15/24
9	ISSUED FOR PERMIT	1/15/24
10	ISSUED FOR PERMIT	1/15/24
11	ISSUED FOR PERMIT	1/15/24
12	ISSUED FOR PERMIT	1/15/24
13	ISSUED FOR PERMIT	1/15/24
14	ISSUED FOR PERMIT	1/15/24
15	ISSUED FOR PERMIT	1/15/24
16	ISSUED FOR PERMIT	1/15/24
17	ISSUED FOR PERMIT	1/15/24
18	ISSUED FOR PERMIT	1/15/24
19	ISSUED FOR PERMIT	1/15/24
20	ISSUED FOR PERMIT	1/15/24
21	ISSUED FOR PERMIT	1/15/24
22	ISSUED FOR PERMIT	1/15/24
23	ISSUED FOR PERMIT	1/15/24
24	ISSUED FOR PERMIT	1/15/24
25	ISSUED FOR PERMIT	1/15/24
26	ISSUED FOR PERMIT	1/15/24
27	ISSUED FOR PERMIT	1/15/24
28	ISSUED FOR PERMIT	1/15/24
29	ISSUED FOR PERMIT	1/15/24
30	ISSUED FOR PERMIT	1/15/24
31	ISSUED FOR PERMIT	1/15/24
32	ISSUED FOR PERMIT	1/15/24
33	ISSUED FOR PERMIT	1/15/24
34	ISSUED FOR PERMIT	1/15/24
35	ISSUED FOR PERMIT	1/15/24
36	ISSUED FOR PERMIT	1/15/24
37	ISSUED FOR PERMIT	1/15/24
38	ISSUED FOR PERMIT	1/15/24
39	ISSUED FOR PERMIT	1/15/24
40	ISSUED FOR PERMIT	1/15/24
41	ISSUED FOR PERMIT	1/15/24
42	ISSUED FOR PERMIT	1/15/24
43	ISSUED FOR PERMIT	1/15/24
44	ISSUED FOR PERMIT	1/15/24
45	ISSUED FOR PERMIT	1/15/24
46	ISSUED FOR PERMIT	1/15/24
47	ISSUED FOR PERMIT	1/15/24
48	ISSUED FOR PERMIT	1/15/24
49	ISSUED FOR PERMIT	1/15/24
50	ISSUED FOR PERMIT	1/15/24

**DLAAN**  
DESIGN LICENSED ARCHITECT  
1552 COMO AVENUE  
ST. PAUL, MN 55108

ALL RIGHTS RESERVED. NO PART OF THIS DOCUMENT MAY BE REPRODUCED OR TRANSMITTED IN ANY FORM OR BY ANY MEANS, ELECTRONIC OR MECHANICAL, WITHOUT PERMISSION IN WRITING FROM THE ARCHITECT.

*Karla L. Marta Mejia*  
ARCHITECT  
DATE: 1/15/24  
REVISION: 00000000

**FLOOR PLANS,  
CONSTRUCTION NOTES,  
EQUIPMENT LIST**

1/15/24  
1/15/24  
1/15/24  
1/15/24

10  
A2  
1/15/24