

Exhibit A

A) DOC. NO. T1024919 AND A2730991

Request for Certificates of Intended Non-Use (CINU)
City of Saint Paul, Department of Public Works

Description of Portion to be Released

That part of the 30.00 foot Utility Easement retained within Clear Avenue, vacated per Document No. T1024919 and A2730991, as recorded in Ramsey County, Minnesota described as follows:

Centered along the center line of Vacated Clear Avenue lying between Arcade Street and the west line of the east 13.00 feet of Lot 26, Block 3, KING'S ARCADE PARK, Ramsey County, Minnesota, extended southerly across said Clear Avenue,

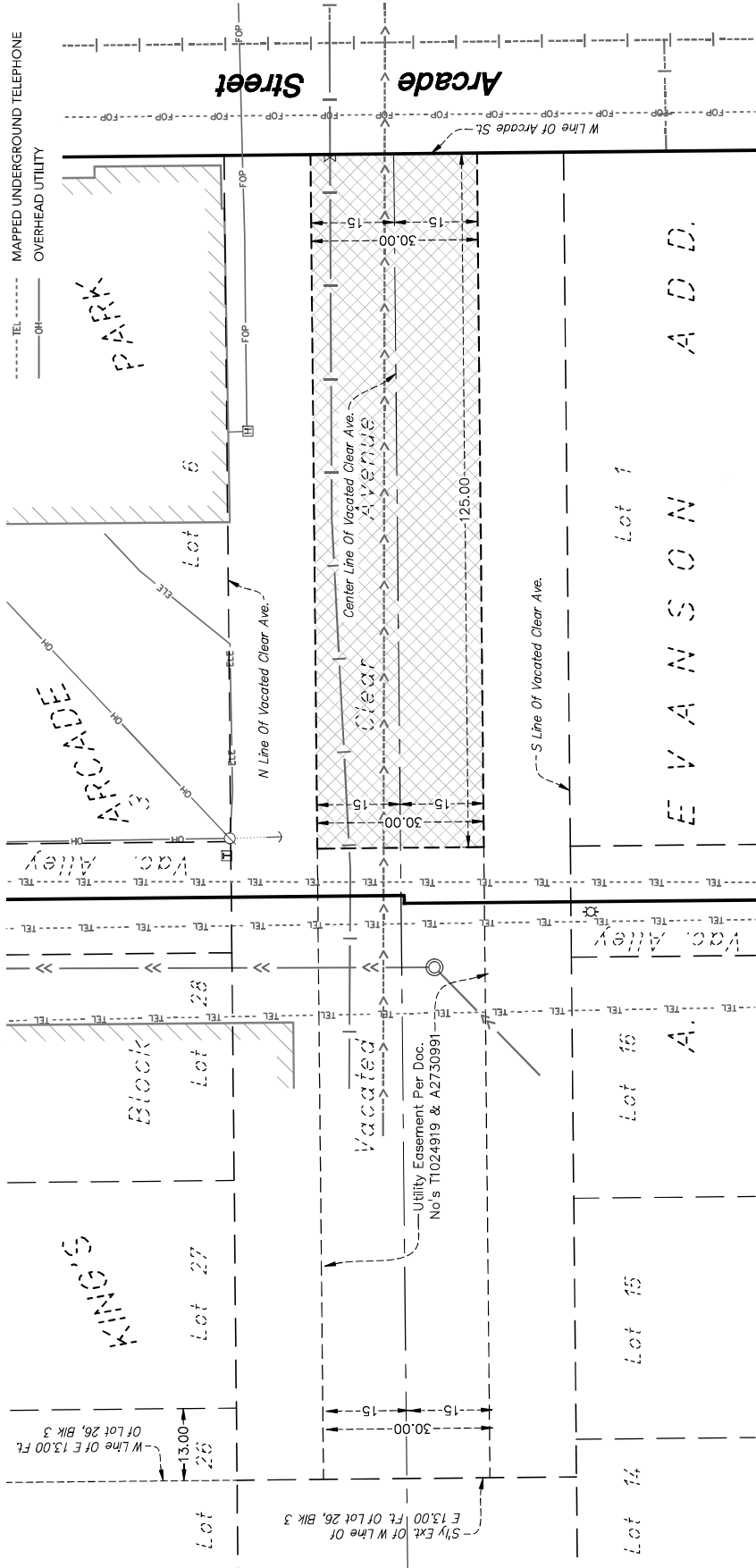
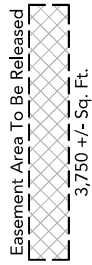
lying east of a line 125.00 feet westerly of the west line of Arcade Street and west of the west line of Arcade Street.

LEGEND

- ⊙ STORM MAINHOLE
- ⊗ GATE VALVE
- ⊕ LIGHT POLE
- ⊖ POWER POLE
- ⊚ ELECTRIC TRANSFORMER
- ← GUY WIRE
- ⊞ TELEPHONE PEDESTAL
- ⊟ EXISTING BUILDING
- ⊠ STORM SEWER
- ⊡ MAPPED SANITARY SEWER
- ⊢ WATERMAIN
- ⊣ MAPPED WATERMAIN
- ⊤ UNDERGROUND ELECTRIC
- ⊥ UNDERGROUND FIBER OPTIC
- ⊦ MAPPED UNDERGROUND FIBER OPTIC
- ⊧ OVERHEAD UNDERGROUND TELEPHONE
- ⊨ OVERHEAD UTILITY



SCALE IN FEET



30K ORGANIZATION
1331 ARCADE STREET
5TH FLOOR
ST. PAUL, MN 55106

STUDIO BV
1000 WASHINGTON AVENUE
MINNEAPOLIS, MN 55401

LOUCKS
PLANNING
ENGINEERING
LAND SURVEYING
LANDSCAPE ARCHITECTURE
ENVIRONMENTAL

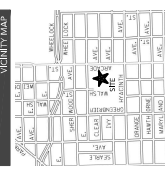
7200 Humboldt Lane, Suite 300
Maple Grove, MN 55126
763.424.5505
www.loucksinc.com

CARD QUALIFICATION
I hereby certify that the person named above is a duly Licensed Professional Engineer in the State of Minnesota and is qualified to perform the duties of a Professional Engineer in the State of Minnesota.

SUBMITTALS/REVISIONS
01/17/24
EXHIBIT ISSUED

PROFESSIONAL SIGNATURE
I hereby certify that the person named above is a duly Licensed Professional Engineer in the State of Minnesota and is qualified to perform the duties of a Professional Engineer in the State of Minnesota.

QUALITY CONTROL
Loecks Project No. 23474A
DIT
Checked By
Field Crew



CINU FOR UTILITY EXHIBIT
1 OF 4