

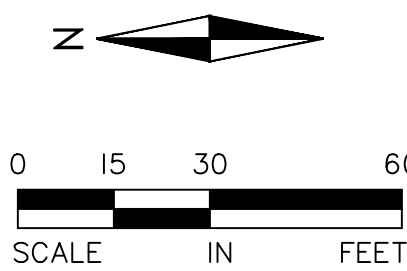
**LEGAL DESCRIPTION**

Lot 1, Block 3, THE HEIGHTS, according to the recorded plat thereof, Ramsey County, Minnesota.

Situated in Section 23, Township 29, Range 22

**LEGEND**

- LOT LINE
- - - PRIVATE UTILITY CORRIDOR / PROPOSED EASEMENT
- ROW



**THE HEIGHTS (PHASE 1) - BLOCKS 3 & 4**

TWIN CITIES HABITAT FOR HUMANITY

SAINT PAUL, MINNESOTA

**SITE PLAN REVIEW SUBMITTAL**

**PRELIMINARY PLAT - BLOCK 3**

I hereby certify that this plan, specification, or report was prepared by me or under my direct supervision and that I am a duly licensed PROFESSIONAL ENGINEER under the laws of the State of MINNESOTA.

NOT FOR CONSTRUCTION  
 CLARK WICKLUND, PE  
 3-25-24  
 Date License No.

**QUALITY ASSURANCE/CONTROL**

DATE	ISSUE
10-17-23	SCHEMATIC UTILITY DESIGN
10-26-23	CLIENT REVIEW
11-9-23	VARIANCE APPLICATION
12-15-23	SITE PLAN REVIEW APPL.
2-29-24	SPR CITY COMMENTS
3-25-24	PRELIM. PLAT

**PROJECT TEAM DATA**

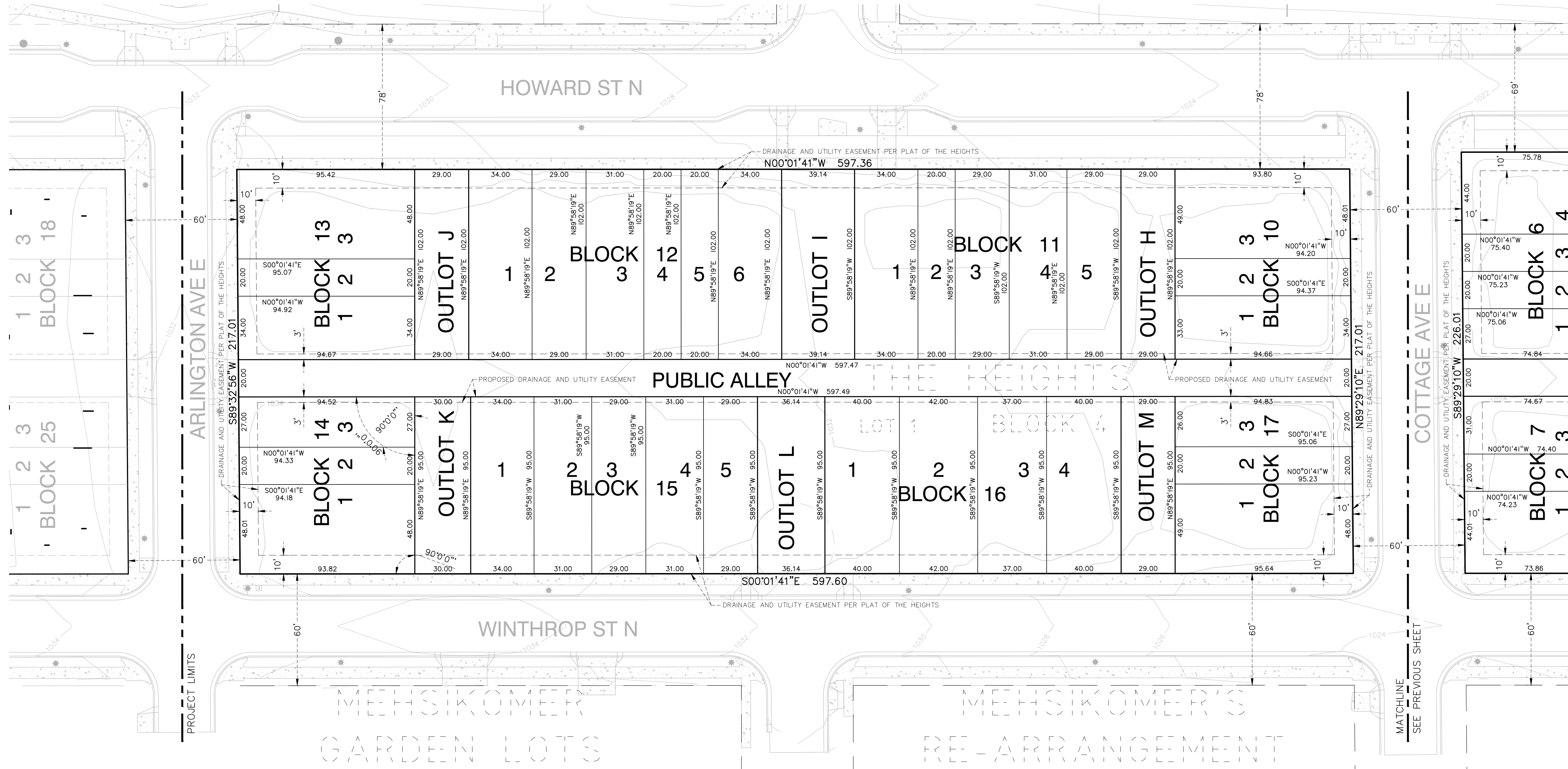
DESIGNED: ST  
 DRAWN: ST  
 PROJECT NO: 223-0172

**ALLIANT**  
 733 Marquette Avenue  
 Suite 700  
 Minneapolis, MN 55402  
 612.758.3080  
 www.alliant-inc.com

**Habitat for Humanity**

**DORAN ARCHITECTURE**

Drawing name: X:\2023\230172 - The Heights\plan\_sheets\230172\preplat.dwg Mar 25, 2024 11:05am



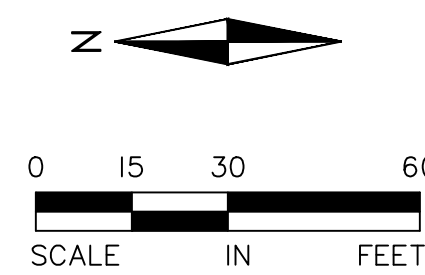
**LEGAL DESCRIPTION**

Lot 1, Block 4, THE HEIGHTS, according to the recorded plat thereof, Ramsey County, Minnesota.

Situated in Section 23, Township 29, Range 22

**LEGEND**

- LOT LINE
- - - PRIVATE UTILITY CORRIDOR / PROPOSED EASEMENT
- ROW



**ALLIANT**  
 733 Marquette Avenue  
 Suite 700  
 Minneapolis, MN 55402  
 612.758.3080  
 www.alliant-inc.com



**DORAN**  
 ARCHITECTURE

**THE HEIGHTS (PHASE 1) - BLOCKS 3 & 4**  
 TWIN CITIES HABITAT FOR HUMANITY  
 SAINT PAUL, MINNESOTA  
**SITE PLAN REVIEW SUBMITTAL**  
**PRELIMINARY PLAT - BLOCK 4**

I hereby certify that this plan, specification, or report was prepared by me or under my direct supervision and that I am a duly licensed PROFESSIONAL ENGINEER under the laws of the State of MINNESOTA.

CLARK WICKLUND, PE  
 3-25-24  
 Date License No. 14141

**QUALITY ASSURANCE/CONTROL**

DATE	ISSUE
10-17-23	SCHEMATIC UTILITY DESIGN
10-26-23	CLIENT REVIEW
11-9-23	VARIANCE APPLICATION
12-15-23	SITE PLAN REVIEW APPL.
2-29-24	SPR CITY COMMENTS
3-25-24	PRELIM. PLAT

**PROJECT TEAM DATA**

DESIGNED:	ST
DRAWN:	ST
PROJECT NO:	223-0172