

**CITY OF ST PAUL**

Department of Public Works
 25 West 4th Street
 1500 City Hall Annex
 Saint Paul, MN 55102

ORDINANCE PERMIT**OFFICE USE ONLY**

Application No. _____
 Application Date _____
 SPR File # _____
 Permit No. _____

Type of Permit (select one only):

- | | | |
|-----------------------------------------|----------------------------------------------|-----------------------------------------------------------|
| <input type="checkbox"/> Base Roadway | <input type="checkbox"/> Roadway Sidewalks | <input type="checkbox"/> Sanitary Sewer Collection System |
| <input type="checkbox"/> Bridge | <input type="checkbox"/> Roadway Traffic | <input type="checkbox"/> Storm Sewer Collection System |
| <input type="checkbox"/> Retaining Wall | <input type="checkbox"/> Sanitary Drop Shaft | <input type="checkbox"/> Storm Sewer Treatment System |

Phase:**Location** (Street On, From/To, and Adjacent Lots/Blocks):

Description of Work: [Include the description provided in the permit application and all subsequent amendments or revisions, which are hereby incorporated by reference.]

Applicant Contact Person:**Contact Person Title:****Contact Person Telephone:****Contact Person Email:****Bond Co.:****Bond Amount:****Bond No.:****Insurance Co.:****Insurance Certificate No.:****Permit Conditions:**

This permit is issued with the stipulation that the work of the permittee and related agents, employees and contractors shall conform in all respects to the Redevelopment Agreement (including all Legal Requirements as defined by Article 1), the City of Saint Paul Department of Public Works Ordinance Permit Process Document, and the Department of Public Works List of Applicable Standards & Specifications. The permit shall be available for display at the site referred to herein and shown to any Police Officer or Inspector upon demand and does not authorize or allow for interference with the work of any Contract made or to be made with the City of Saint Paul.

**THIS PERMIT MAY BE REVOKED AT ANY TIME
 BY THE DIRECTOR OF PUBLIC WORKS**

A PERMIT FOR THE ABOVE DESCRIBED CONSTRUCTION IS AUTHORIZED BY:*David Kuebler*

Signature

Title

Date

Printed Name

PERMIT NUMBER _____

**ITEMS TO BE COMPLETED PRIOR TO ACCEPTANCE OF INFRASTRUCTURE
AND RELEASE OF PERMIT**

Prior to acceptance of any infrastructure and release of City permits, the following items must be completed to the satisfaction of the City:

- Corrective (punch list) work completed;
- Original reproducible CAD and PDF as-built plans, signed by the Engineer of Record, provided to Public Works; Submittal of final copies of Metropolitan Council Environmental Services and MN Pollution Control Agency Permits (Sewer Extension, SAC Determination, etc.);
- Full compliance with project Quality Management Plan or other document(s) governing quality management and quality assurance;
- Documentation of compliance with all applicable City and non-City permit requirements, including, but not limited to: City Public Works Right-of-Way Office, Minnesota Pollution Control Agency, Capitol Region Watershed District, and National Pollution Discharge Elimination System permit requirements;
- Documentation of roadway materials at compaction of grading and base, plant mix design report, strength;
- Video of all sanitary sewer mains and laterals, storm sewer mains and laterals, and any structural BMP's (pipe galleries, drantile, sediment control structures, weir structures, etc.) installed under any permit, provided to the Public Works Sewer Division;
- Sewer Permit drawings for paving connections or stubs installed to service vertical development provided to Public Works, in addition to Private Service Lateral Permit Drawings;
- Documentation of Public Works notified for signal and lighting inspection of pole field layouts (staking), conduits and foundations installed, poles and wiring installed, and head positioning and phasing/detection verification (signals only);
- For infrastructure within parks: Documentation that Parks Department has been notified of completion status;
- All applicable operation and maintenance manuals provided to Public Works; and
- Certificate of Compliance signed and submitted to City by Engineer of Record.

RELEASE OF PERMIT:

Permit No. _____ Council Res. No. _____ Permit Date _____

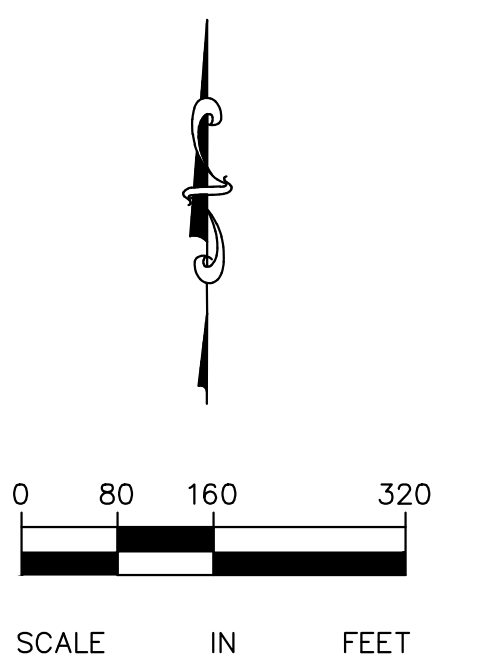
Release Authorized by _____ Title _____

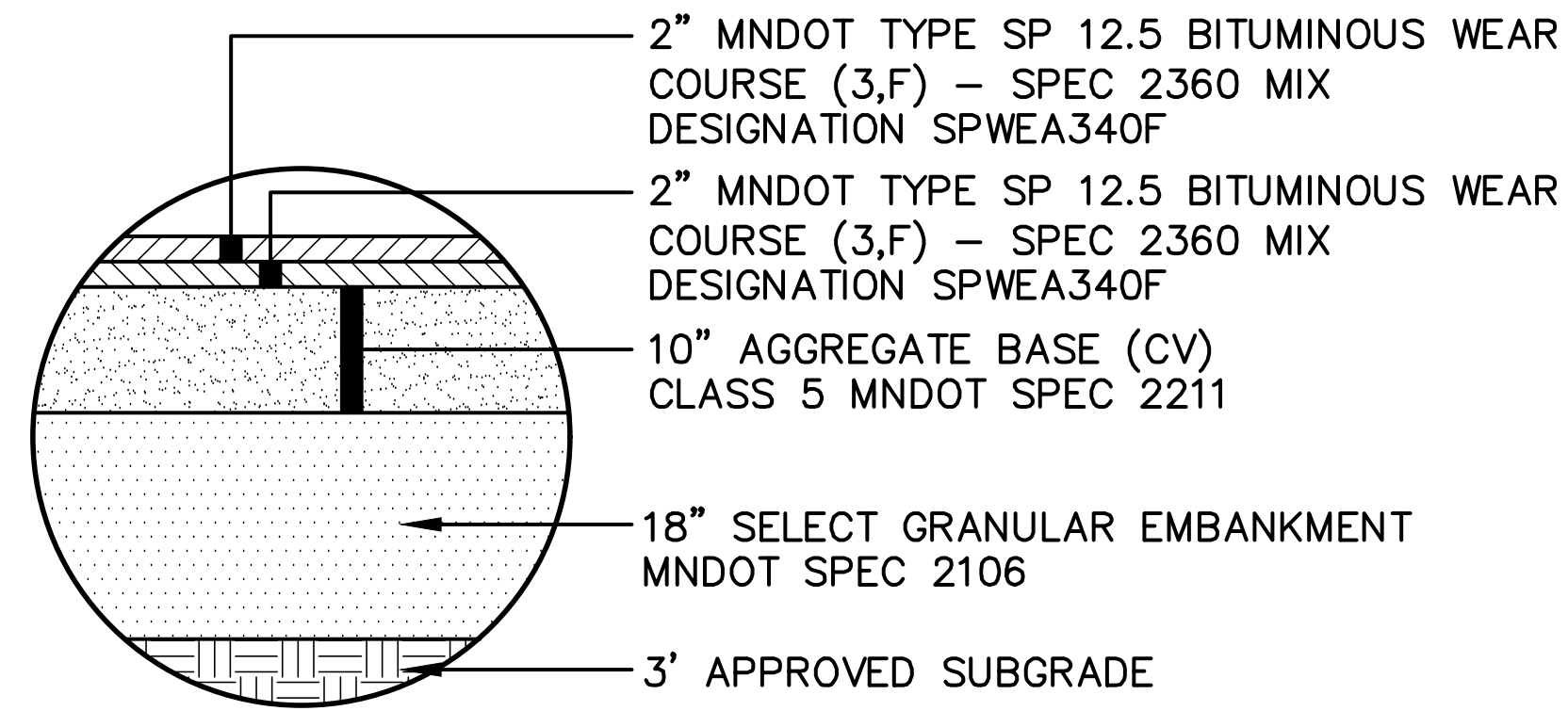
2022 Infrastructure Projection Exhibit Draft Updated on 1/11/2022



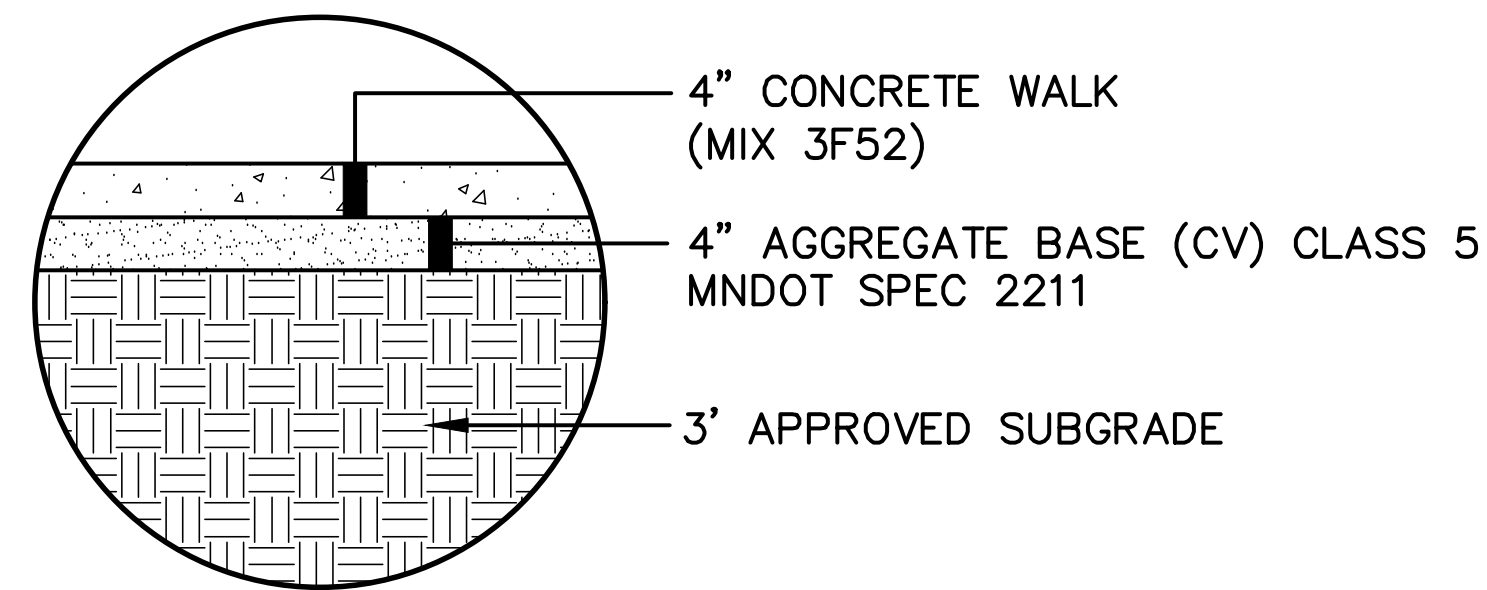
Legend

- Vehicular Roadway
- Non-Vehicular Roadway + Boulevard
- ROW Sidewalk, Bike Lane & Boulevard
- Boulevard Trees & Landscape
- Park Space

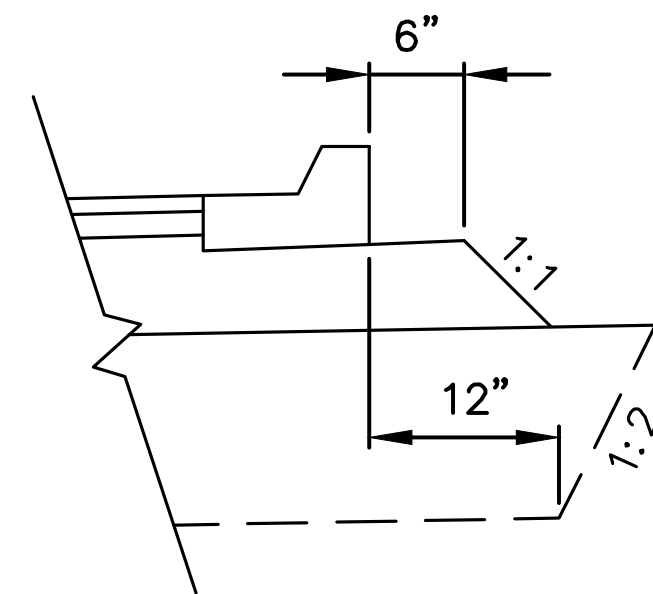




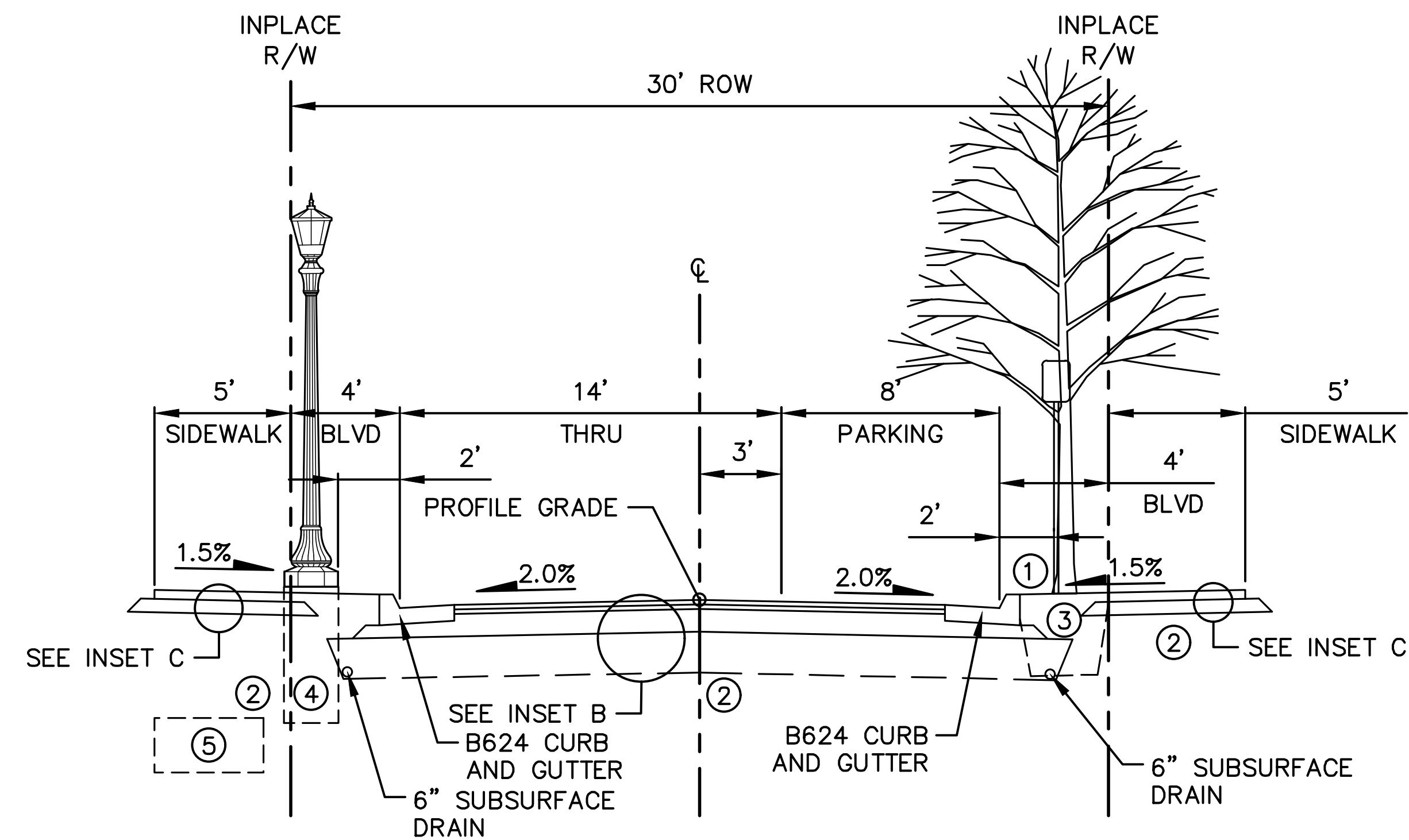
INSET B – SECONDARY ROAD



INSET C – 4" CONCRETE SIDEWALK



TYPICAL GRADING DETAIL AT CURBS



WOODLAWN AVENUE

MOUNT CURVE BOULEVARD TO YORKSHIRE AVENUE
(STA. 80+00 – STA. 83+96)
MONTREAL AVENUE TO SAUNDERS AVENUE
(STA. 87+93 – STA. 91+50)
VILLAGE WAY TO BEECHWOOD AVENUE
(STA. 95+00 – STA. 98+93)

LEGEND

- ① BOULEVARD CROSS SLOPE MAY VARY FROM 0.5% TO 8%.
- ② EXCAVATE AND DISPOSE OF SHALE OR CONSTRUCTION DEBRIS ENCOUNTERED WITHIN 3 FEET OF FINISHED GRADE.
- ③ CENTER TREES IN BOULEVARD OR MEDIAN. MINIMUM OF 300 CF OF TOPSOIL REQUIRED FOR TREE ROOT ZONE (TOPSOIL SHALL DISPLACE ROADWAY MATERIALS).
- ④ LIGHT BASE DIMENSIONS OF 2' DIAMETER AND 6' DEEP PER CITY STANDARD PLATE 8127E. TOP OF FOUNDATION TO BE 3" ABOVE BLVD GRADE.
- ⑤ PRIVATE UTILITY CORRIDOR.
- ⑥ 8' SIDEWALK NORTH OF VILLAGE WAY. 6' SIDEWALK SOUTH OF VILLAGE WAY.

GENERAL NOTES:

1. BOULEVARD TREES AND STREETLIGHT TO ALTERNATE THE LENGTH OF THE STREET.
2. TREE DETAILS INCLUDED FOR GENERAL INFORMATION AND COMMENT. SPACING AND SPECIES OF BOULEVARD TREES TO BE INCLUDED ON LANDSCAPE PLANS.
3. STREETLIGHT DETAIL AND LOCATION INCLUDED FOR GENERAL INFORMATION AND COMMENT. SPACING OF STREET LIGHTING TO BE INCLUDED ON LIGHTING PLANS.
4. CITY STANDARD 12" OF TOPSOIL AND SEED/SOD.
5. UNLESS OTHERWISE SPECIFIED, THE OUTFALL CURB AND GUTTER CROSS SLOPES SHALL BE THE SAME AS THE ADJACENT FINISHED SURFACE.
6. TACK COAT TO BE APPLIED BETWEEN BITUMINOUS PAVEMENT LIFTS.
7. SIDEWALKS SHALL HAVE A MINIMUM CROSS SLOPE OF 1.5% AND A MAXIMUM CROSS SLOPE OF 2%. SIDEWALK THAT IS CONSTRUCTED OUT OF COMPLIANCE WILL BE REJECTED

No.	Date	Revisions	App.	DRAWING NAME
				Ford Plan Typs.dwg
				DESIGNED BY: RJG
				DRAWN BY: RJG
				CHECKED BY: GSB
				DATE: 05/27/20
				PROJECT NO. 160640016

Kimley»Horn

767 EUSTIS STREET, SUITE 100, ST. PAUL, MN 55114
PHONE: 651-645-4197
WWW.KIMLEY-HORN.COM

HEREBY CERTIFY THAT THIS PLAN, SPECIFICATION OR REPORT WAS PREPARED BY ME OR UNDER MY DIRECT SUPERVISION AND THAT I AM A DULY LICENSED PROFESSIONAL ENGINEER UNDER THE LAWS OF THE STATE OF MINNESOTA.

Gregory S. Brown

GREGORY S. BROWN, PE

DATE: 05/27/20 MN LIC. NO. 22814

RYAN



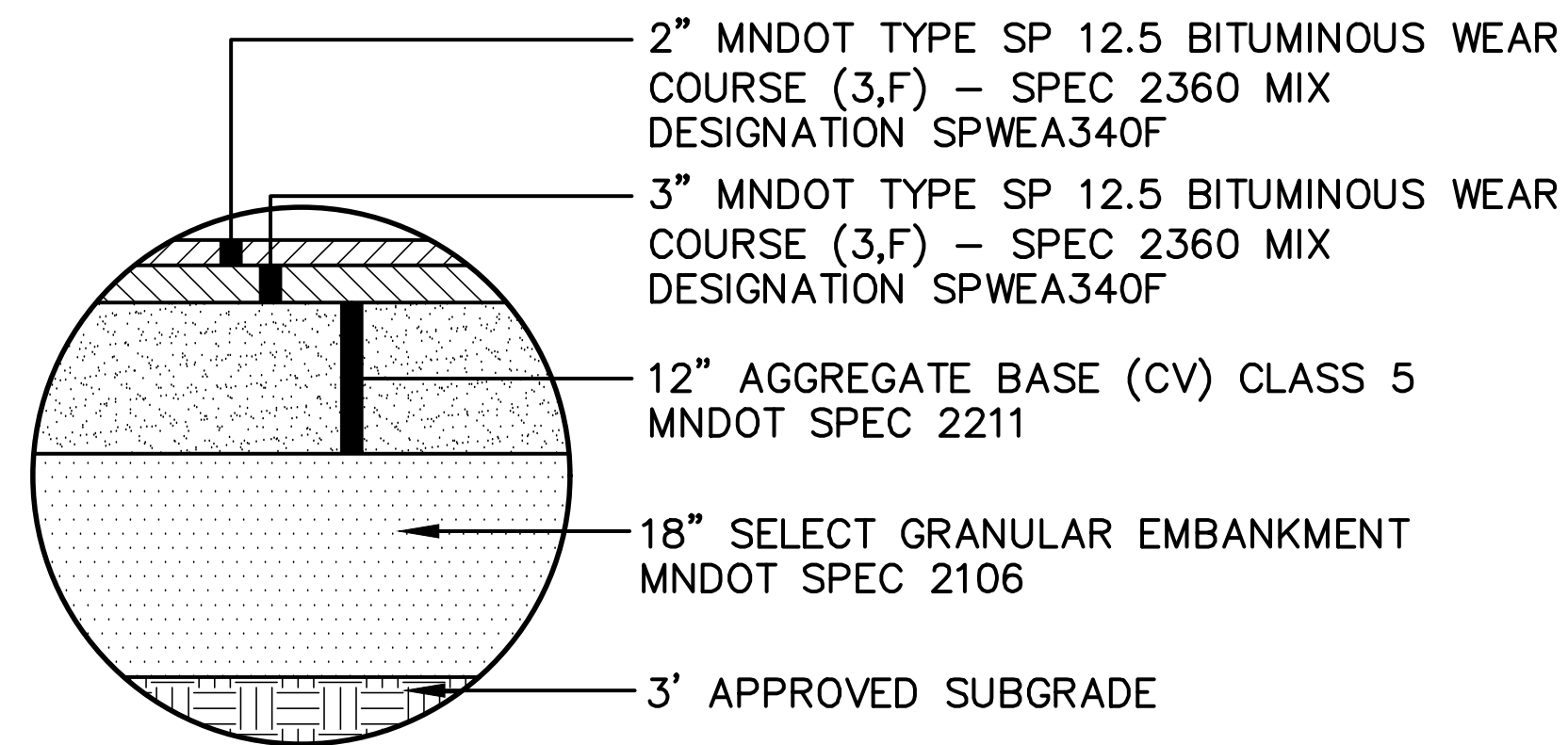
RYAN COMPANIES US, INC.
FORD SITE REDEVELOPMENT
CITY OF ST PAUL, MINNESOTA
FINAL SITE PLAN

TYPICAL SECTIONS

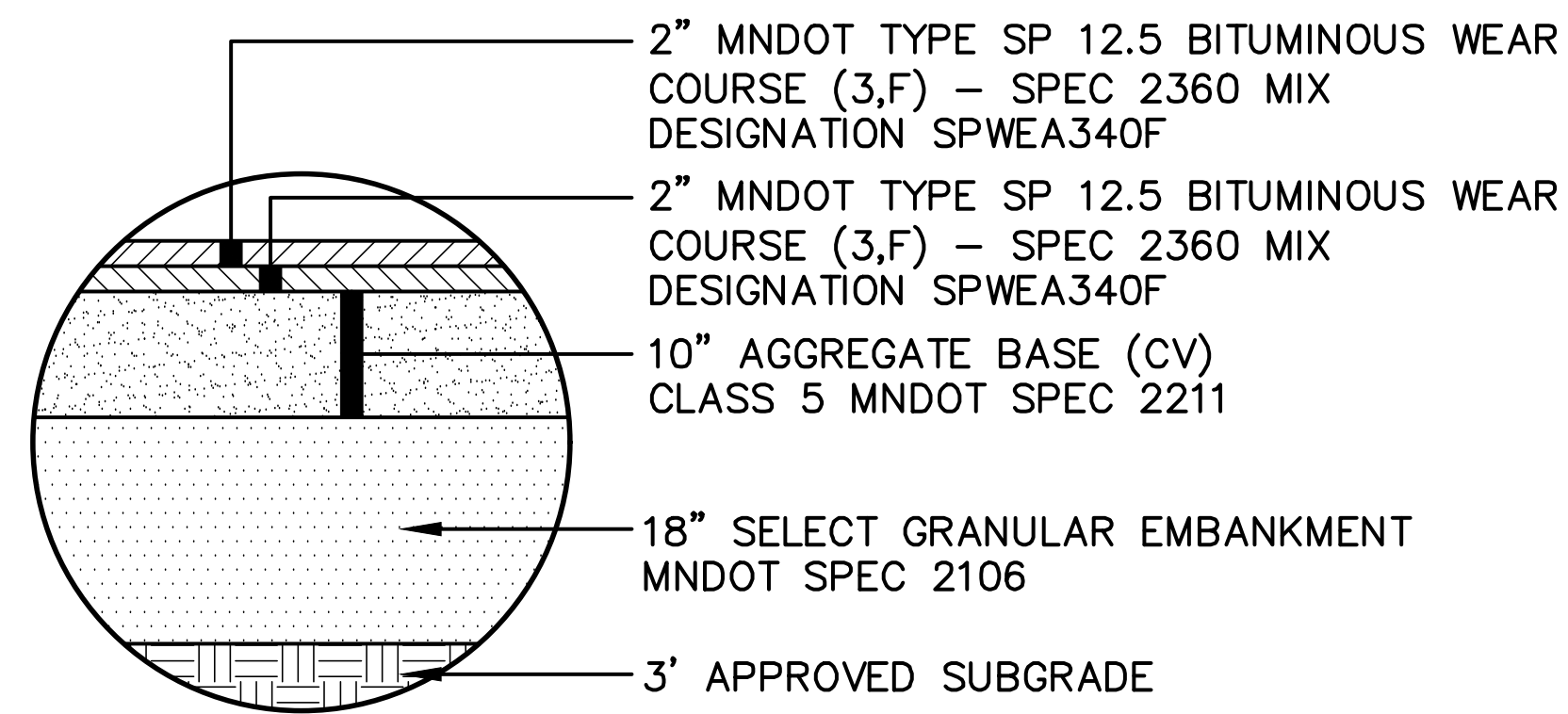
SHEET NO.

8

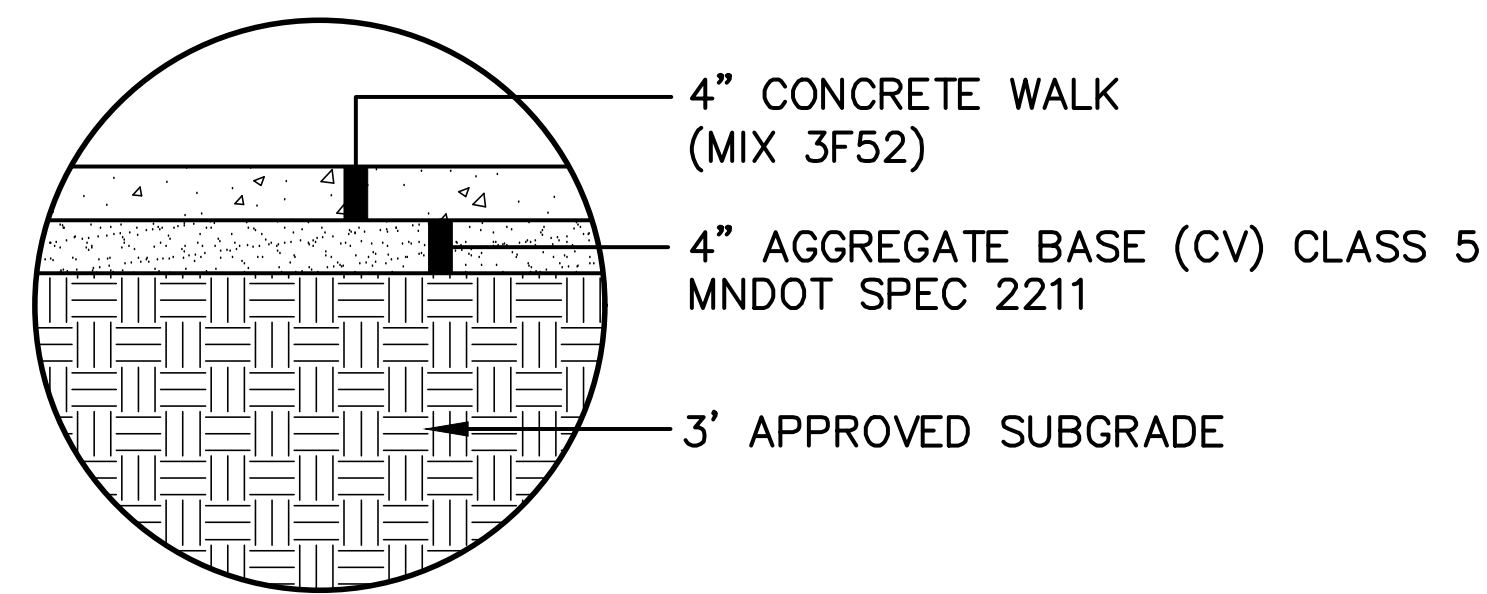
522



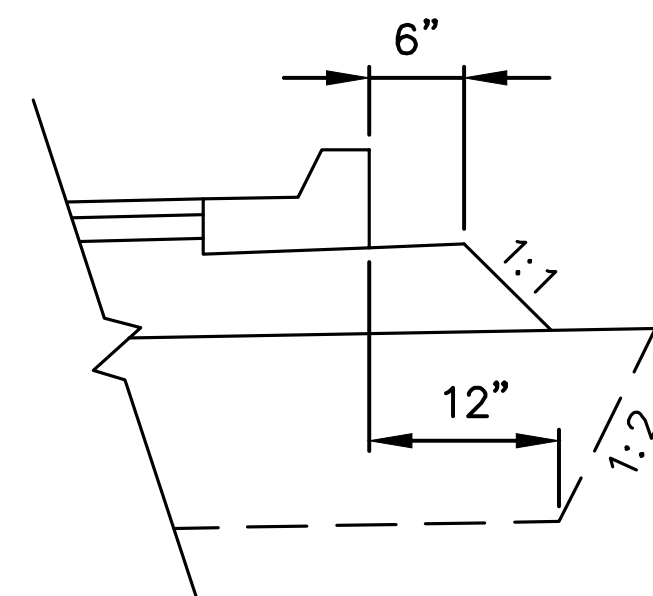
INSET A – PRIMARY ROAD



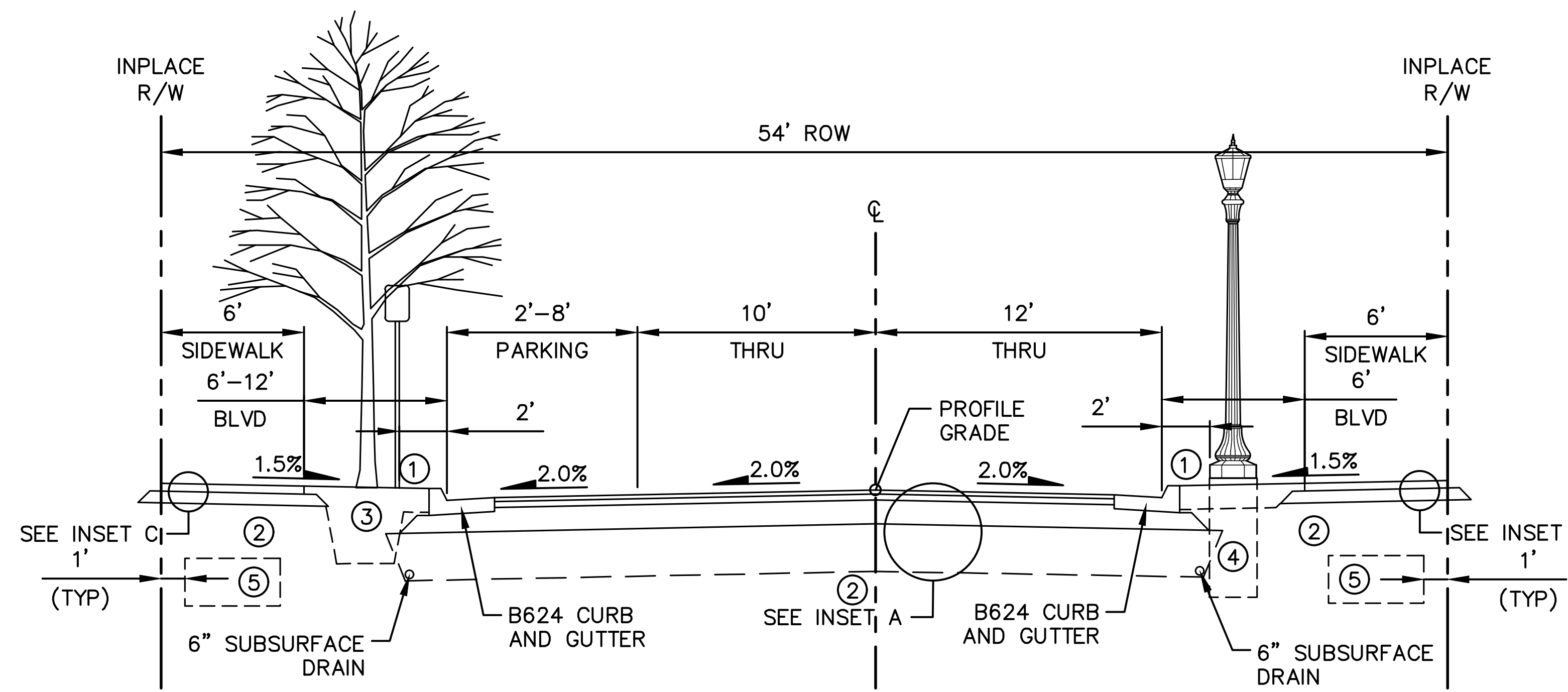
INSET B – SECONDARY ROAD



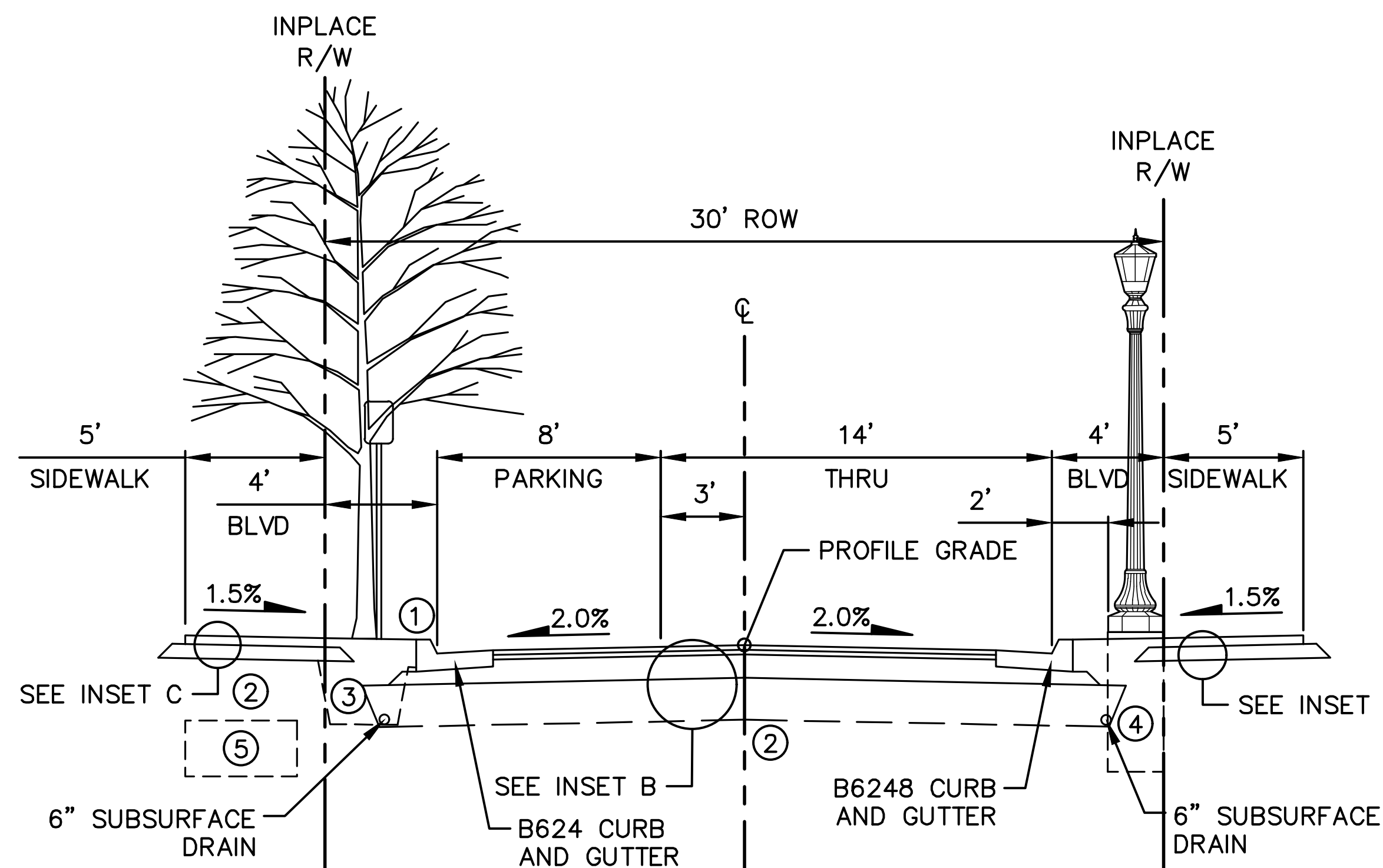
INSET C – 4" CONCRETE SIDEWALK



TYPICAL GRADING DETAIL AT CURBS



WOODLAWN AVENUE
BOHLAND AVENUE TO HILLCREST AVENUE
(STA. 102+73 – STA. 106+18)



WOODLAWN AVENUE
YORKSHIRE AVENUE TO MONTREAL AVENUE
(STA. 83+96 – STA. 87+93)
SAUNDERS AVENUE TO VILLAGE WAY
(STA. 91+50 – STA. 95+00)
BEECHWOOD AVENUE TO BOHLAND AVENUE
(STA. 98+93 – STA. 102+73)

LEGEND

- ① BOULEVARD CROSS SLOPE MAY VARY FROM 0.5% TO 8%.
- ② EXCAVATE AND DISPOSE OF SHALE OR CONSTRUCTION DEBRIS ENCOUNTERED WITHIN 3 FEET OF FINISHED GRADE.
- ③ CENTER TREES IN BOULEVARD. MINIMUM OF 300 CF OF TOPSOIL REQUIRED FOR TREE ROOT ZONE (TOPSOIL SHALL DISPLACE ROADWAY MATERIALS).
- ④ LIGHT BASE DIMENSIONS OF 2' DIAMETER AND 6' DEEP PER MNDOT STANDARD PLATE 8127E. TOP OF FOUNDATION TO BE 3" ABOVE BLVD GRADE.
- ⑤ PRIVATE UTILITY CORRIDOR.

GENERAL NOTES:

- 1. TREE DETAILS INCLUDED FOR GENERAL INFORMATION AND COMMENT. SPACING AND SPECIES OF BOULEVARD TREES TO BE INCLUDED ON LANDSCAPE PLANS.
- 2. STREETLIGHT DETAIL AND LOCATION INCLUDED FOR GENERAL INFORMATION AND COMMENT. SPACING OF STREET LIGHTING TO BE INCLUDED ON LIGHTING PLANS.
- 3. CITY STANDARD 12" OF TOPSOIL AND SEED/SOD.
- 4. UNLESS OTHERWISE SPECIFIED, THE OUTFALL CURB AND GUTTER CROSS SLOPES SHALL BE THE SAME AS THE ADJACENT FINISHED SURFACE.
- 5. TACK COAT TO BE APPLIED BETWEEN BITUMINOUS PAVEMENT LIFTS.
- 6. SIDEWALKS SHALL HAVE A MINIMUM CROSS SLOPE OF 1.5% AND A MAXIMUM CROSS SLOPE OF 2%. SIDEWALK THAT IS CONSTRUCTED OUT OF COMPLIANCE WILL BE REJECTED.

No.	Date	Revisions	App.	DRAWING NAME
				Ford Plan Typs.dwg
				DESIGNED BY: RJG
				DRAWN BY: RJG
				CHECKED BY: GSB
				DATE: 05/27/20
				PROJECT NO. 160640016

Kimley»Horn

767 EUSTIS STREET, SUITE 100, ST. PAUL, MN 55114
PHONE: 651-645-4197
WWW.KIMLEY-HORN.COM

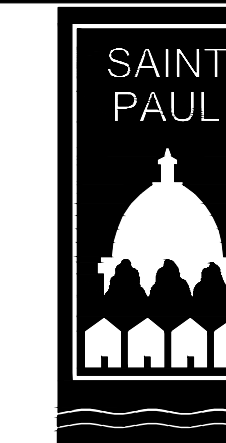
HEREBY CERTIFY THAT THIS PLAN, SPECIFICATION OR REPORT WAS PREPARED BY ME OR UNDER MY DIRECT SUPERVISION AND THAT I AM A DULY LICENSED PROFESSIONAL ENGINEER UNDER THE LAWS OF THE STATE OF MINNESOTA.

Gregory S. Brown

GREGORY S. BROWN, PE

DATE: 05/27/20 MN LIC. NO. 22814

RYAN



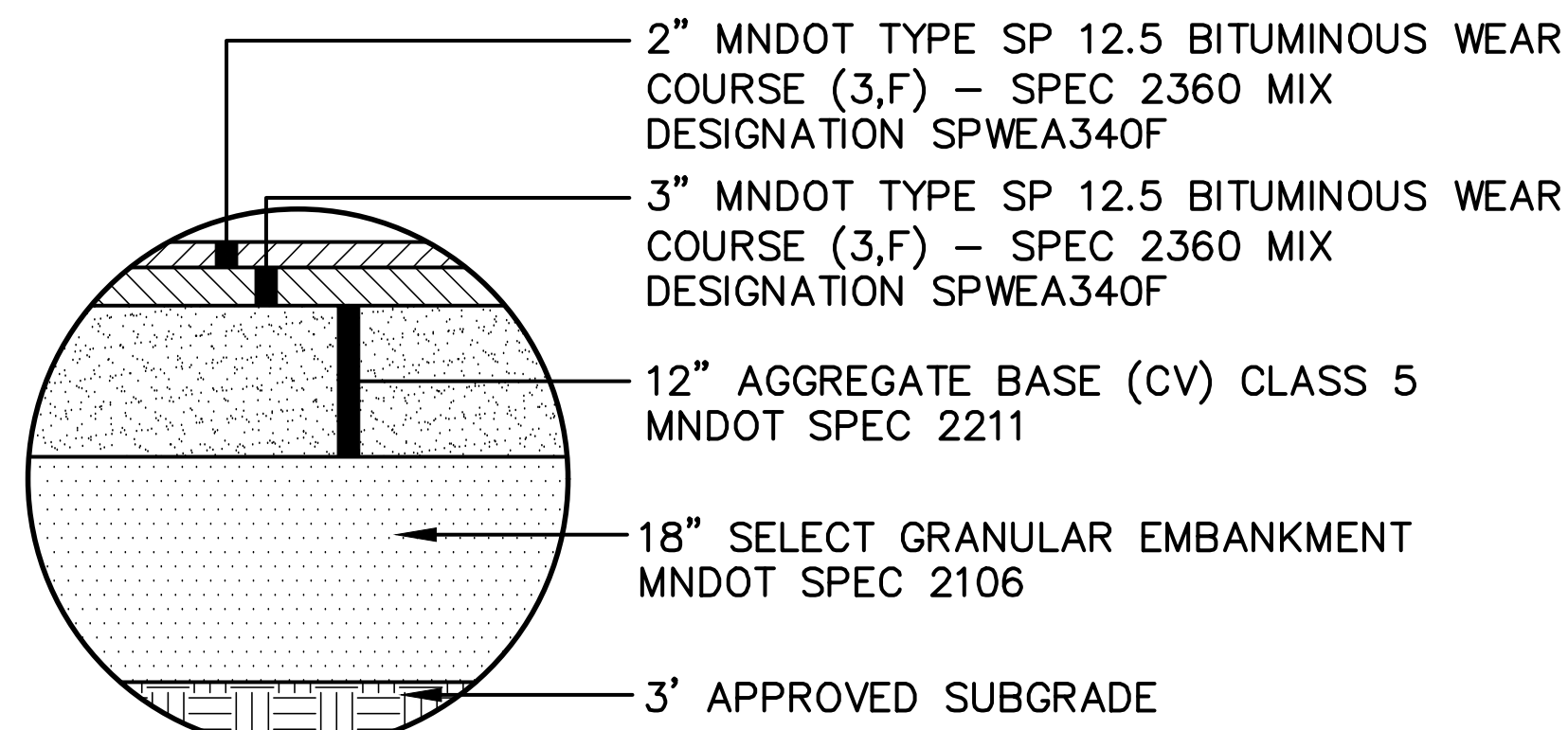
RYAN COMPANIES US, INC.
FORD SITE REDEVELOPMENT
CITY OF ST PAUL, MINNESOTA
FINAL SITE PLAN

TYPICAL SECTIONS

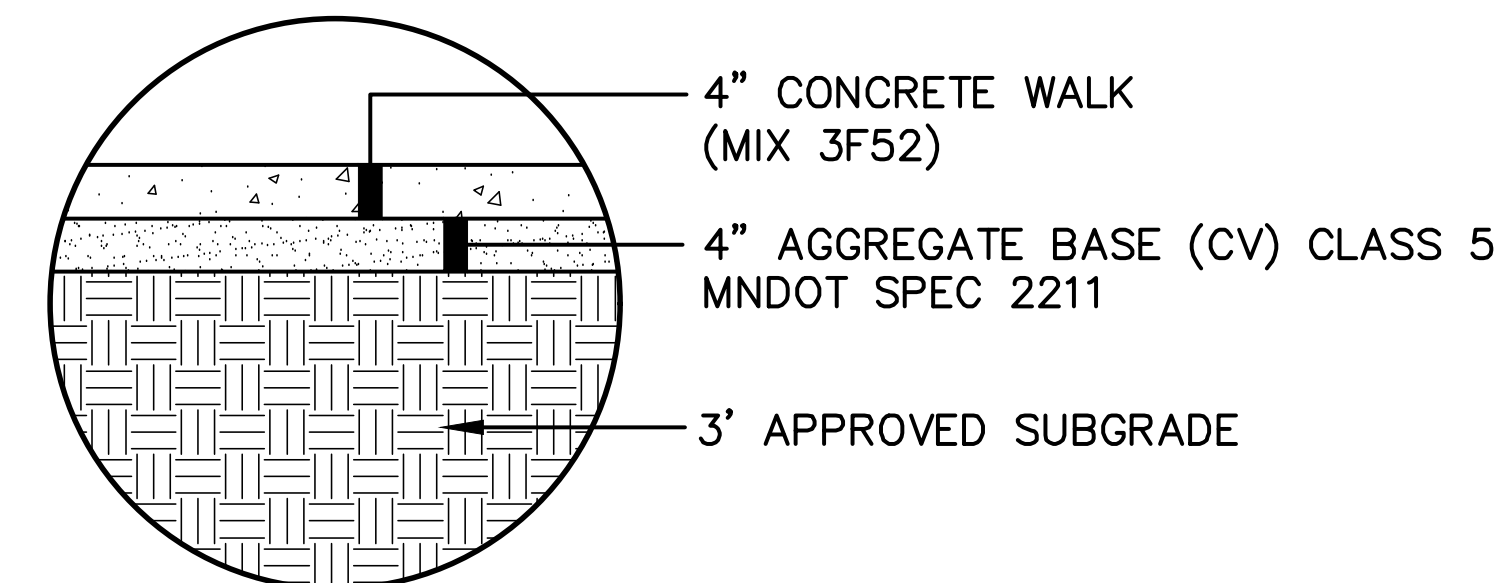
SHEET NO.

9

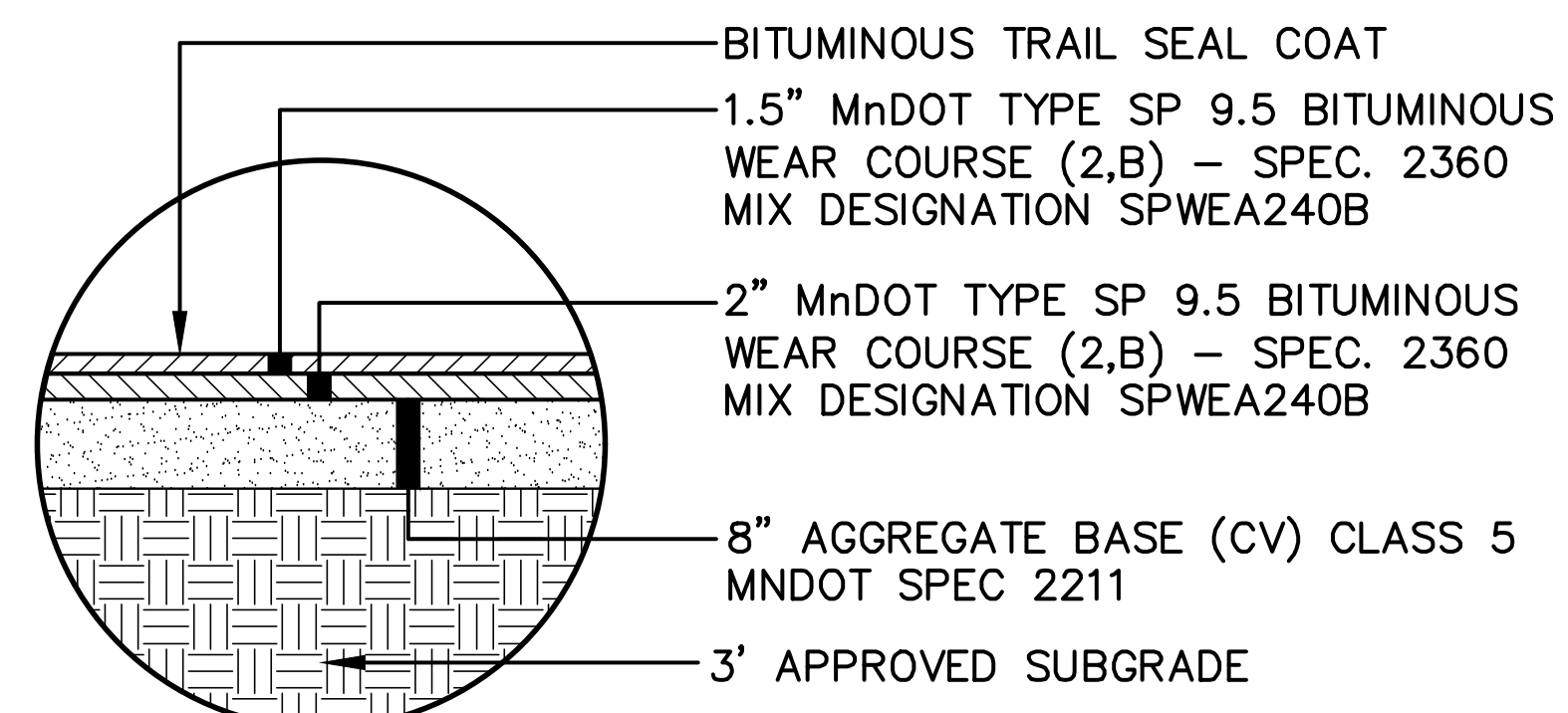
522



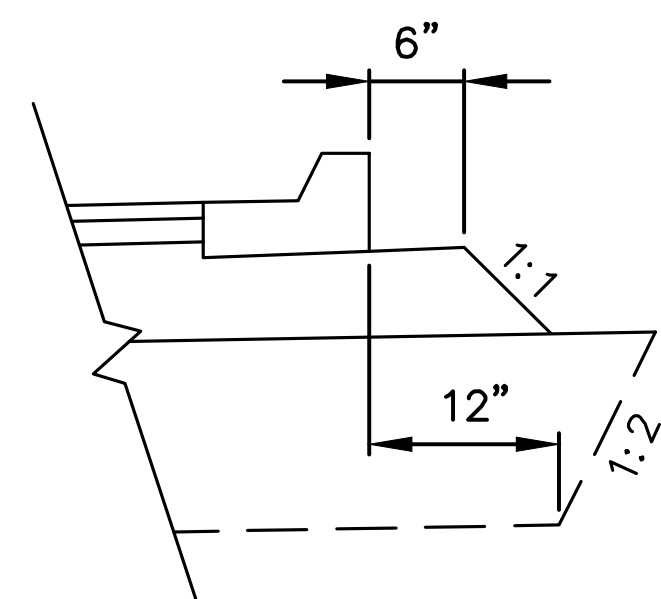
INSET A - PRIMARY ROAD



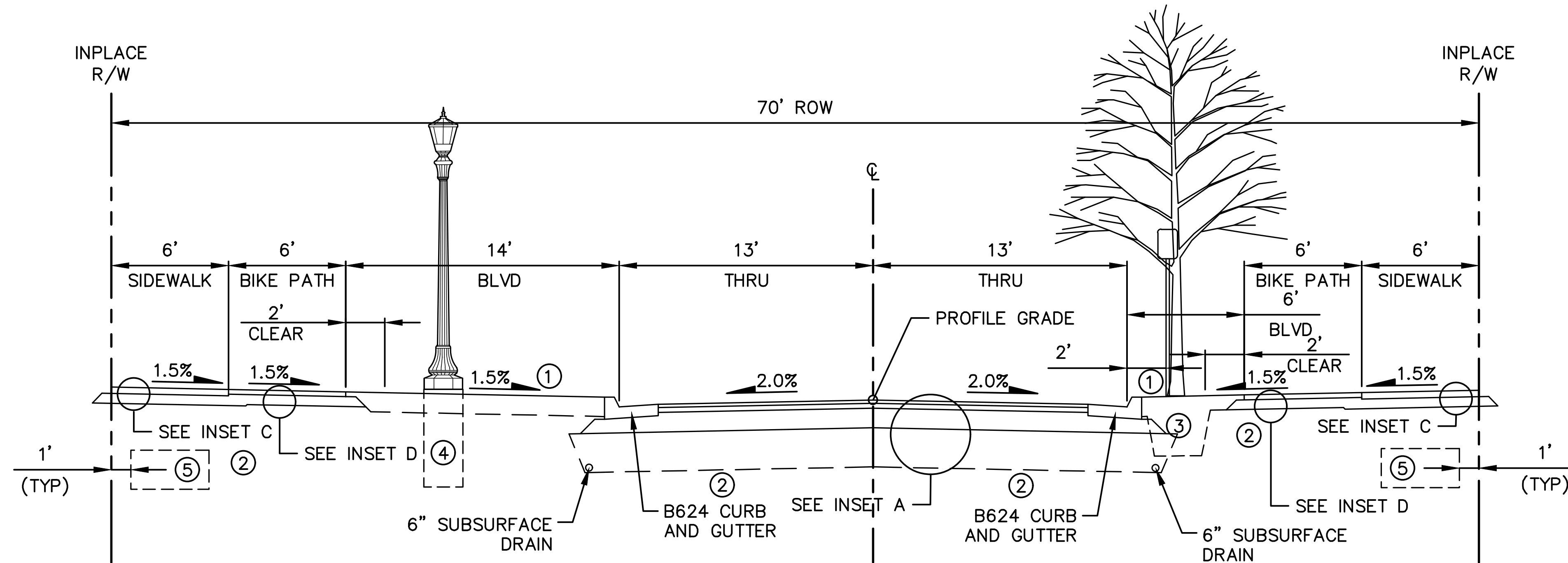
INSET C - 4" CONCRETE SIDEWALK



INSET D - BITUMINOUS TRAIL

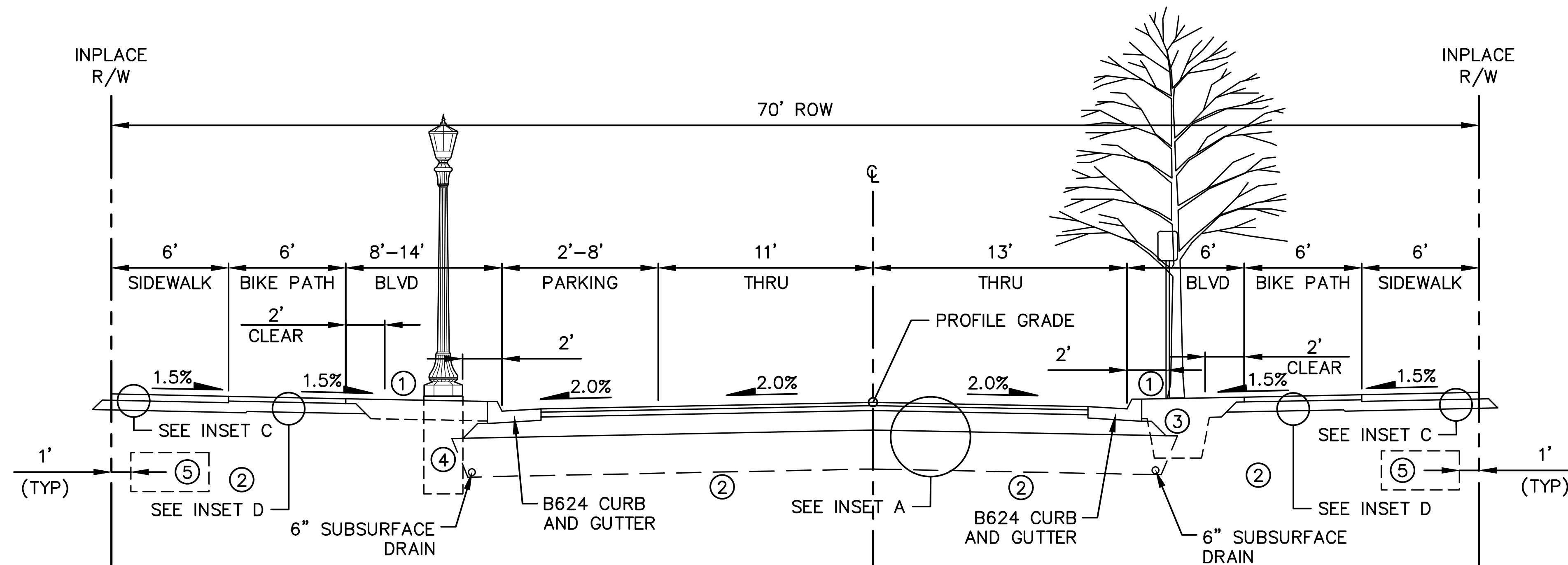


TYPICAL GRADING DETAIL AT CURBS



MOUNT CURVE BOULEVARD

MONTREAL AVENUE TO BOHLAND AVENUE
 (STA. 56+52 - STA. 57+90)
 (STA. 59+89 - STA. 60+29)
 (STA. 67+14 - STA. 67+55)



MOUNT CURVE BOULEVARD

MONTREAL AVENUE TO BOHLAND AVENUE
 (STA. 57+90 - STA. 59+89)
 (STA. 60+29 - STA. 67+15)
 (STA. 67+55 - STA. 68+80)

LEGEND

- ① BOULEVARD CROSS SLOPE MAY VARY FROM 0.5% TO 8%.
- ② EXCAVATE AND DISPOSE OF SHALE OR CONSTRUCTION DEBRIS ENCOUNTERED WITHIN 3 FEET OF FINISHED GRADE.
- ③ CENTER TREES IN BOULEVARD. MINIMUM OF 300 CF OF TOPSOIL REQUIRED FOR TREE ROOT ZONE (TOPSOIL SHALL DISPLACE ROADWAY MATERIALS).
- ④ LIGHT BASE DIMENSIONS OF 2' DIAMETER AND 6' DEEP PER MNDOT STANDARD PLATE 8127E. TOP OF FOUNDATION TO BE 3" ABOVE BLVD GRADE.
- ⑤ PRIVATE UTILITY CORRIDOR.

GENERAL NOTES:

- 1. BOULEVARD TREES AND STREETLIGHT TO ALTERNATE THE LENGTH OF THE STREET.
- 2. TREE DETAILS INCLUDED FOR GENERAL INFORMATION AND COMMENT. SPACING AND SPECIES OF BOULEVARD TREES TO BE INCLUDED ON LANDSCAPE PLANS.
- 3. STREETLIGHT DETAIL AND LOCATION INCLUDED FOR GENERAL INFORMATION AND COMMENT. SPACING OF STREET LIGHTING TO BE INCLUDED ON LIGHTING PLANS.
- 4. CITY STANDARD 12" OF TOPSOIL AND SEED/SOD.
- 5. UNLESS OTHERWISE SPECIFIED, THE OUTFALL CURB AND GUTTER CROSS SLOPES SHALL BE THE SAME AS THE ADJACENT FINISHED SURFACE.
- 6. TACK COAT TO BE APPLIED BETWEEN BITUMINOUS PAVEMENT LIFTS.
- 7. SIDEWALKS SHALL HAVE A MINIMUM CROSS SLOPE OF 1.5% AND A MAXIMUM CROSS SLOPE OF 2%. SIDEWALK THAT IS CONSTRUCTED OUT OF COMPLIANCE WILL BE REJECTED

No.	Date	Revisions	App.	DRAWING NAME
				Ford Plan Typs.dwg
				DESIGNED BY: RJG
				DRAWN BY: RJG
				CHECKED BY: GSB
				DATE: 05/27/20
				PROJECT NO. 160640016

Kimley»Horn

767 EUSTIS STREET, SUITE 100, ST. PAUL, MN 55114
 PHONE: 651-645-4197
 WWW.KIMLEY-HORN.COM

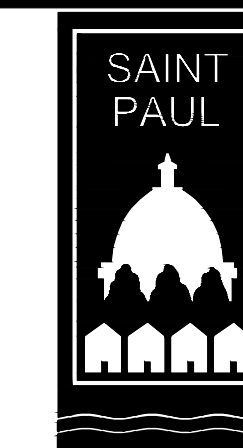
HEREBY CERTIFY THAT THIS PLAN, SPECIFICATION OR REPORT WAS PREPARED BY ME OR UNDER MY DIRECT SUPERVISION AND THAT I AM A DULY LICENSED PROFESSIONAL ENGINEER UNDER THE LAWS OF THE STATE OF MINNESOTA.

Gregory S. Brown

GREGORY S. BROWN, PE

DATE: 05/27/20 MN LIC. NO. 22814

RYAN



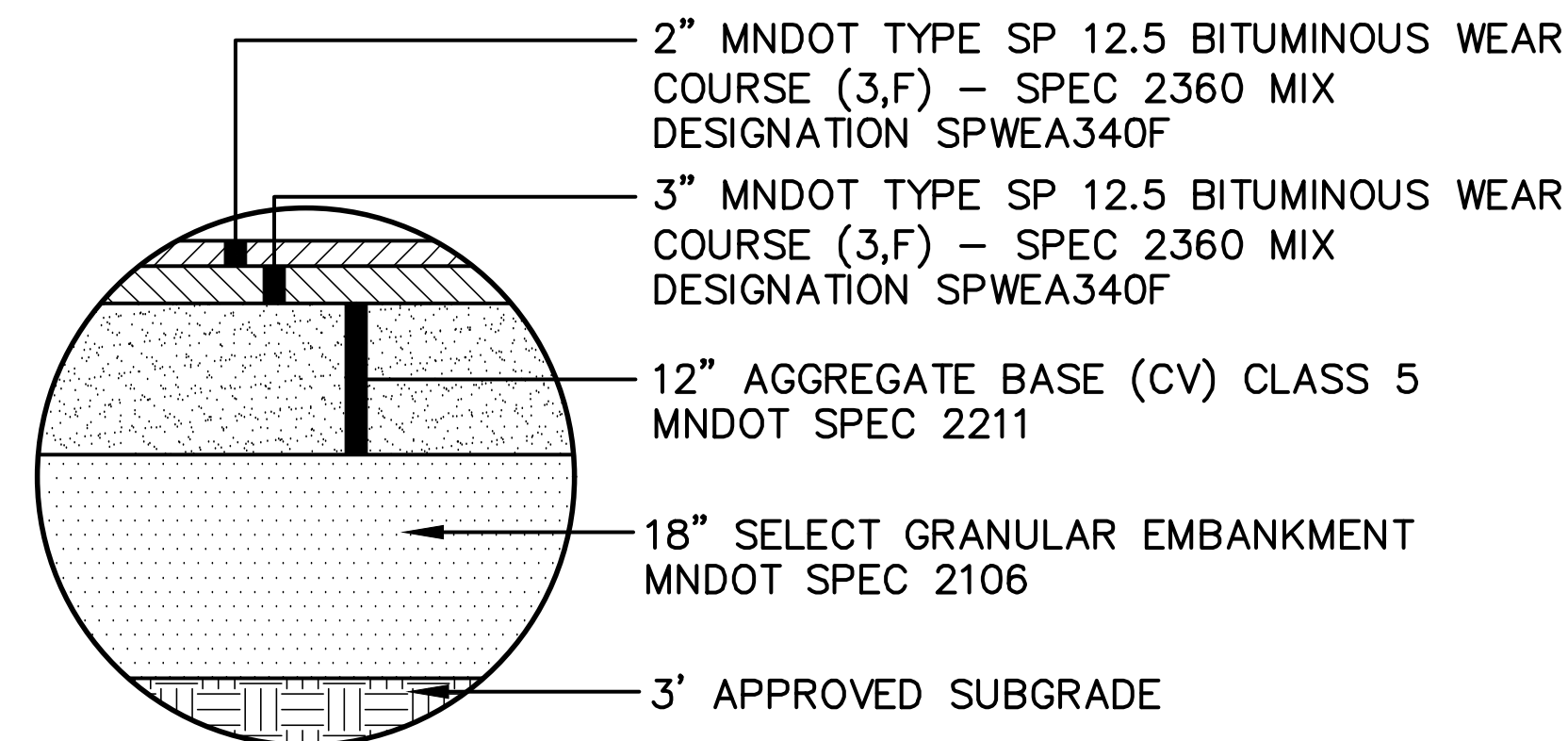
RYAN COMPANIES US, INC.
 FORD SITE REDEVELOPMENT
 CITY OF ST PAUL, MINNESOTA
 FINAL SITE PLAN

TYPICAL SECTIONS

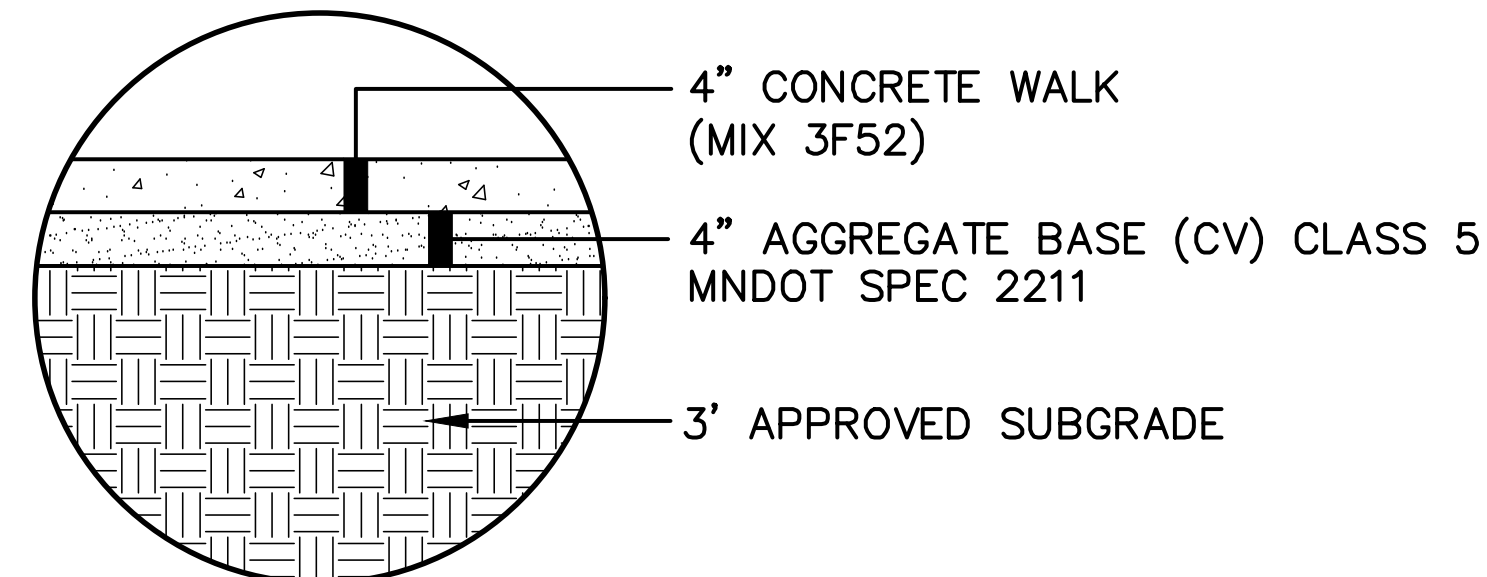
SHEET NO.

12

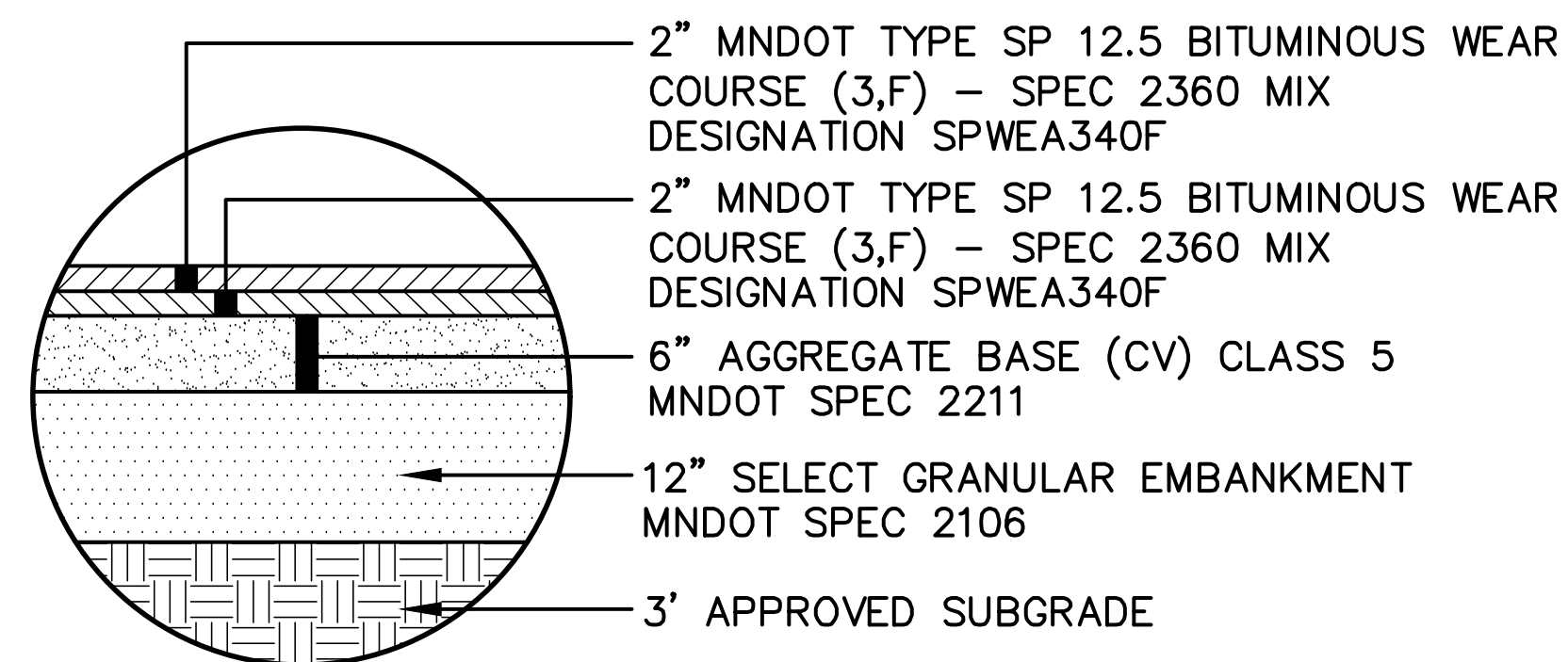
522



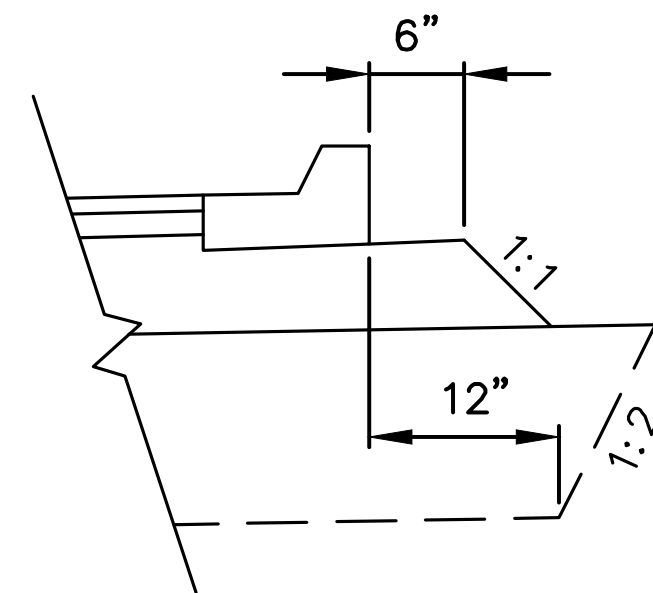
INSET A - PRIMARY ROAD



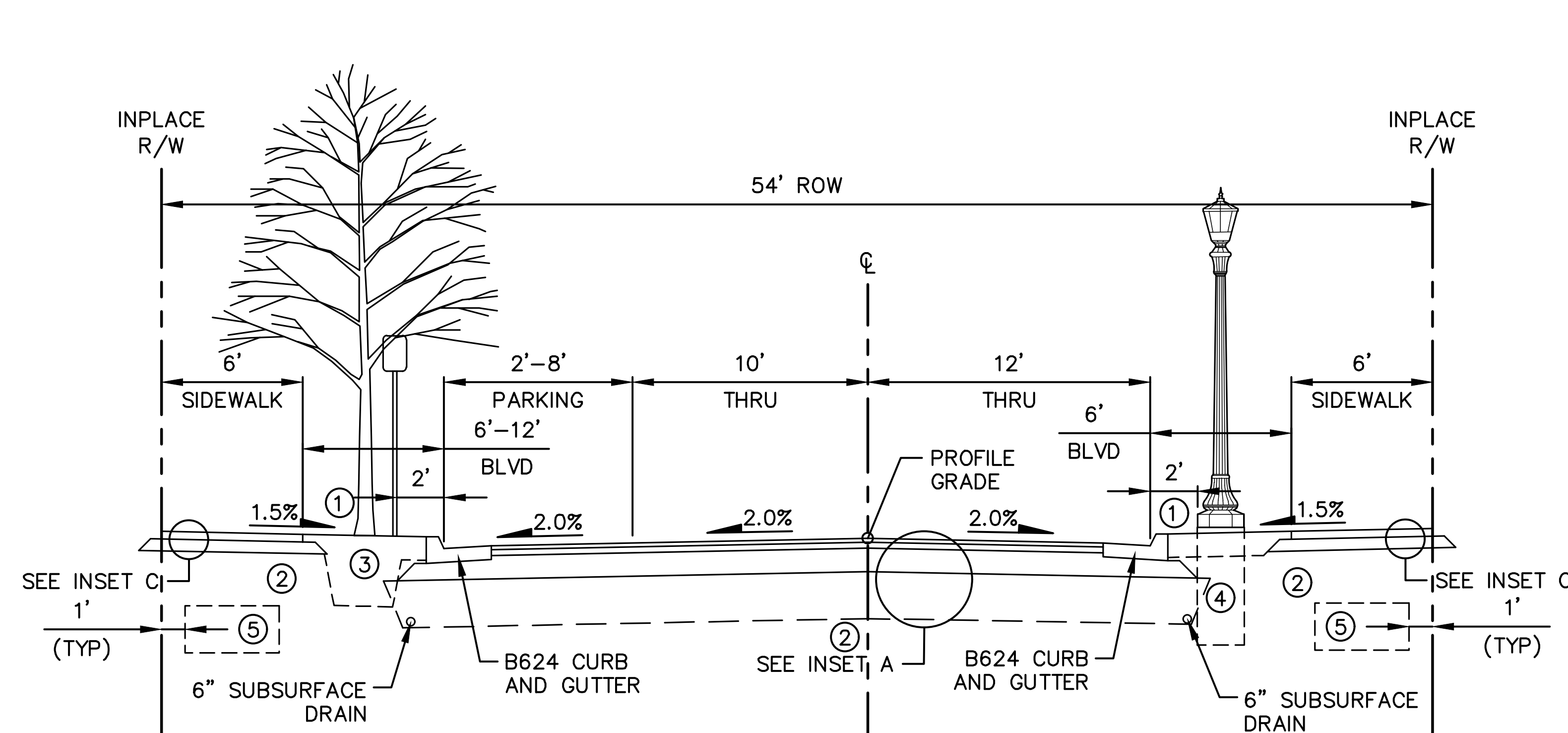
INSET C - 4" CONCRETE SIDEWALK



INSET E - SHARED PATH

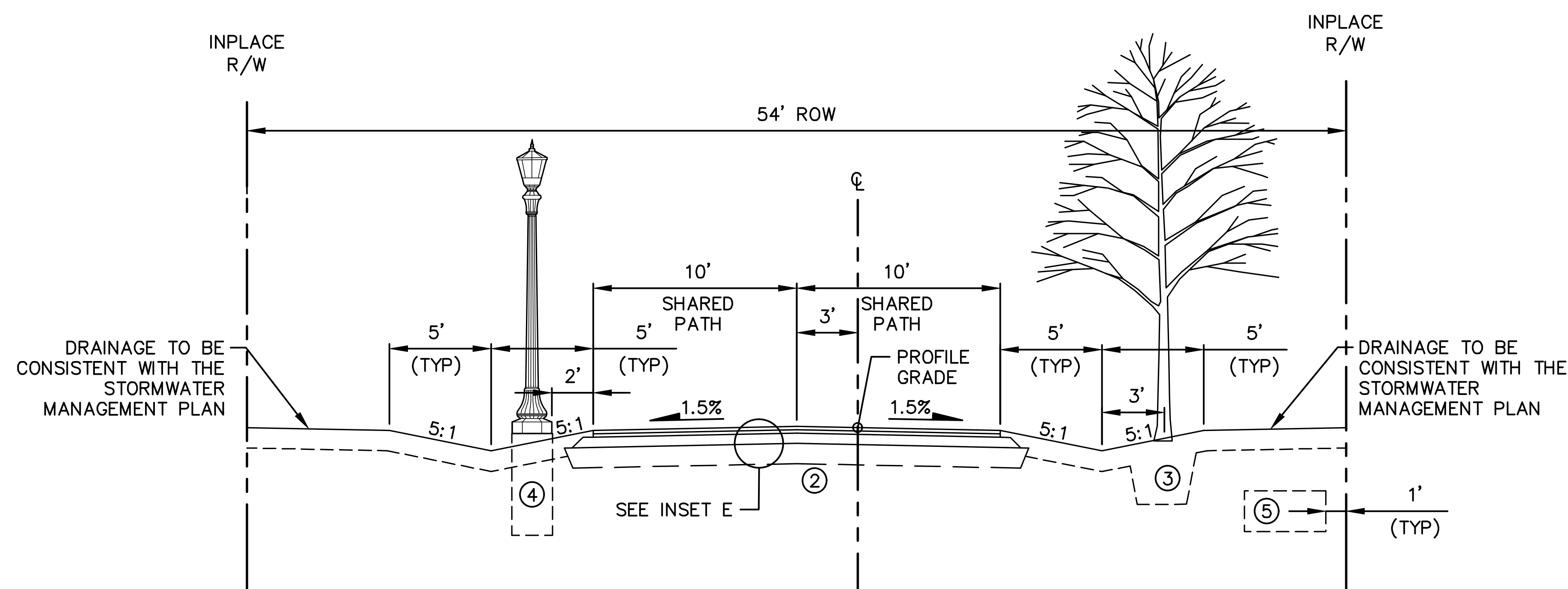


TYPICAL GRADING DETAIL AT CURBS



VILLAGE WAY

BLOCK 14 & 19 ALLEY TO LOT 15 & 21 ALLEY
(STA. 196+74 - STA. 201+46)
BLOCK 16 & 22 ALLEY TO FINN STREET
(STA. 206+36 - STA. 214+20)



VILLAGE WAY

MISSISSIPPI RIVER BOULEVARD TO BLOCK 14 & 19 ALLEY
(STA. 195+40 - STA. 196+73)
BLOCK 15 & 21 ALLEY TO FALLS PASSAGE WEST
(STA. 201+46 - STA. 202+24)
FALLS PASSAGE EAST TO BLOCK 16 & 22 ALLEY
(STA. 205+02 - STA. 206+35)

LEGEND

- ① BOULEVARD CROSS SLOPE MAY VARY FROM 0.5% TO 3.3%. PROPOSED SWALE BOTTOM TO BE 1 FOOT LOWER THAN EDGE OF PAVEMENT GRADE.
- ② EXCAVATE AND DISPOSE OF SHALE OR CONSTRUCTION DEBRIS ENCOUNTERED WITHIN 3 FEET OF FINISHED GRADE.
- ③ CENTER TREES IN BOULEVARD OR BACK SLOPE OF SWALE. MINIMUM OF 300 CF OF TOPSOIL REQUIRED FOR TREE ROOT ZONE (TOPSOIL SHALL DISPLACE ROADWAY MATERIALS).
- ④ LIGHT BASE DIMENSIONS OF 2' DIAMETER AND 6' DEEP PER MNDOT STANDARD PLATE 8127E. TOP OF FOUNDATION TO BE 3" ABOVE BLVD GRADE.
- ⑤ PRIVATE UTILITY CORRIDOR.

GENERAL NOTES:

1. BOULEVARD TREES AND STREETLIGHT TO ALTERNATE THE LENGTH OF THE STREET.
2. TREE DETAILS INCLUDED FOR GENERAL INFORMATION AND COMMENT. SPACING AND SPECIES OF BOULEVARD TREES TO BE INCLUDED ON LANDSCAPE PLANS.
3. STREETLIGHT DETAIL AND LOCATION INCLUDED FOR GENERAL INFORMATION AND COMMENT. SPACING OF STREET LIGHTING TO BE INCLUDED ON LIGHTING PLANS.
4. CITY STANDARD 12" OF TOPSOIL AND SEED/SOD.
5. UNLESS OTHERWISE SPECIFIED, THE OUTFALL CURB AND GUTTER CROSS SLOPES SHALL BE THE SAME AS THE ADJACENT FINISHED SURFACE.
6. TACK COAT TO BE APPLIED BETWEEN BITUMINOUS PAVEMENT LIFTS.
7. SIDEWALKS SHALL HAVE A MINIMUM CROSS SLOPE OF 1.5% AND A MAXIMUM CROSS SLOPE OF 2%. SIDEWALK THAT IS CONSTRUCTED OUT OF COMPLIANCE WILL BE REJECTED

No.	Date	Revisions	App.	DRAWING NAME
				Ford Plan Typs.dwg
				DESIGNED BY: RJG
				DRAWN BY: RJG
				CHECKED BY: GSB
				DATE: 05/27/20
				PROJECT NO. 160640016

Kimley»Horn

767 EUSTIS STREET, SUITE 100, ST. PAUL, MN 55114
PHONE: 651-645-4197
WWW.KIMLEY-HORN.COM

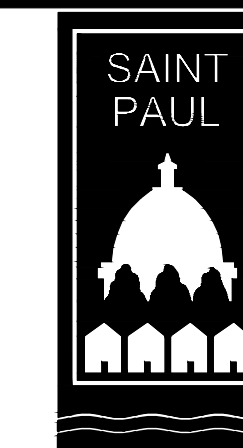
HEREBY CERTIFY THAT THIS PLAN, SPECIFICATION OR REPORT WAS PREPARED BY ME OR UNDER MY DIRECT SUPERVISION AND THAT I AM A DULY LICENSED PROFESSIONAL ENGINEER UNDER THE LAWS OF THE STATE OF MINNESOTA.

Gregory S. Brown

GREGORY S. BROWN, PE

DATE: 05/27/20 MN LIC. NO. 22814

RYAN



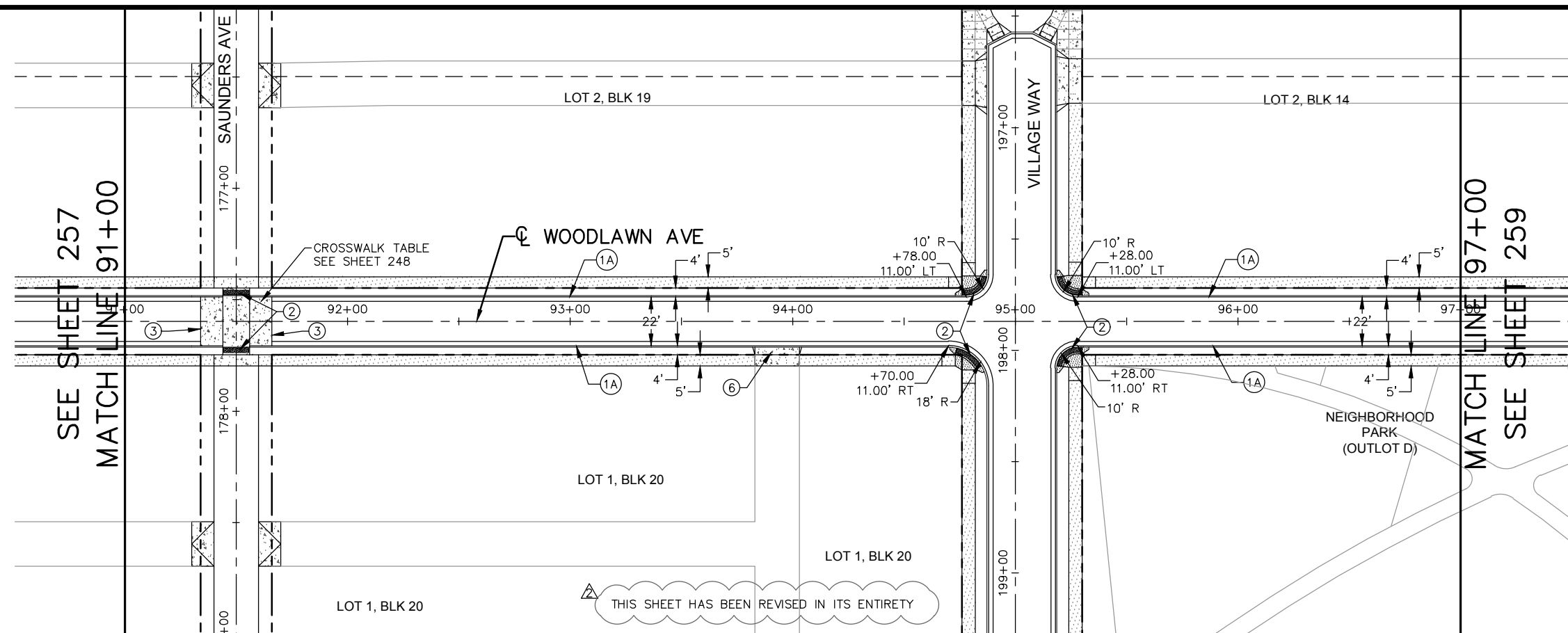
RYAN COMPANIES US, INC.
FORD SITE REDEVELOPMENT
CITY OF ST PAUL, MINNESOTA
FINAL SITE PLAN

TYPICAL SECTIONS

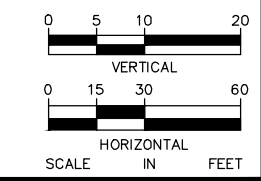
SHEET NO.

16

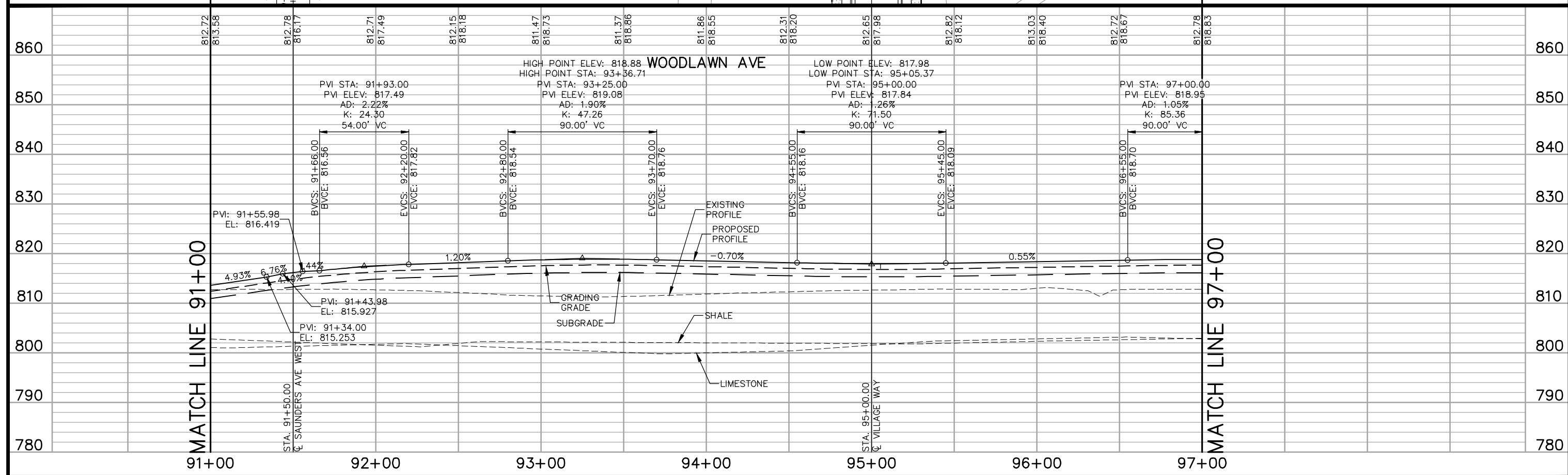
522



- LEGEND**
- ① CONCRETE CURB AND GUTTER
 - A - B624
 - B - B612 OUTFALL
 - C - B612 MODIFIED (SEE SHEET 247 ST. PAUL STD. PLATE 3106A)
 - ② PEDESTRIAN CURB RAMP
 - ③ CONCRETE HEADER JOINTS (SEE DETAIL SHEET 247)
 - ④ PARKING LANE 3:1 TAPER
 - ⑤ SHARED USE PATH PEDESTRIAN RAMP (SEE DETAIL ON SHEET 248)
 - ⑥ CONCRETE DRIVEWAY TYPE 6 (SEE DETAIL ON SHEET 248)
 - ⑦ CONCRETE MEDIAN NOSE (SEE DETAIL SHEET 249)
 - ⑧ ALLEY APRON (SEE SHEET 249)
 - ⑨ MEDIAN REFUGE (SEE SHEET 249)
- NOTES:**
1. ALL DIMENSIONS ARE TO FACE OF CURB UNLESS OTHERWISE NOTED.
 2. SEE TYPICAL SECTIONS FOR LANE, TRAIL AND SIDEWALK DIMENSIONS



THIS SHEET HAS BEEN REVISED IN ITS ENTIRETY



No.	Date	Revisions	App.
2	7/1/20	BULLETIN #2	GSB

DRAWING NAME Ford Plan/Profile NS	
DESIGNED BY:	RJG
DRAWN BY:	RJG
CHECKED BY:	GSB
DATE:	05/27/20
PROJECT NO.	160640016

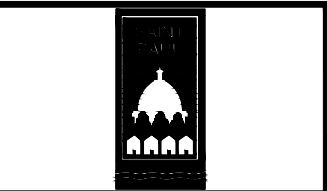
Kimley»Horn

767 EUSTIS STREET, SUITE 100, ST. PAUL, MN 55114
 PHONE: 651-645-4197
 WWW.KIMLEY-HORN.COM

I HEREBY CERTIFY THAT THIS PLAN, SPECIFICATION OR REPORT WAS PREPARED BY ME OR UNDER MY DIRECT SUPERVISION AND THAT I AM A DULY LICENSED PROFESSIONAL ENGINEER UNDER THE LAWS OF THE STATE OF MINNESOTA.

Gregory S. Brown

GREGORY S. BROWN, PE
 DATE: 05/27/20 MN LIC. NO. 22814

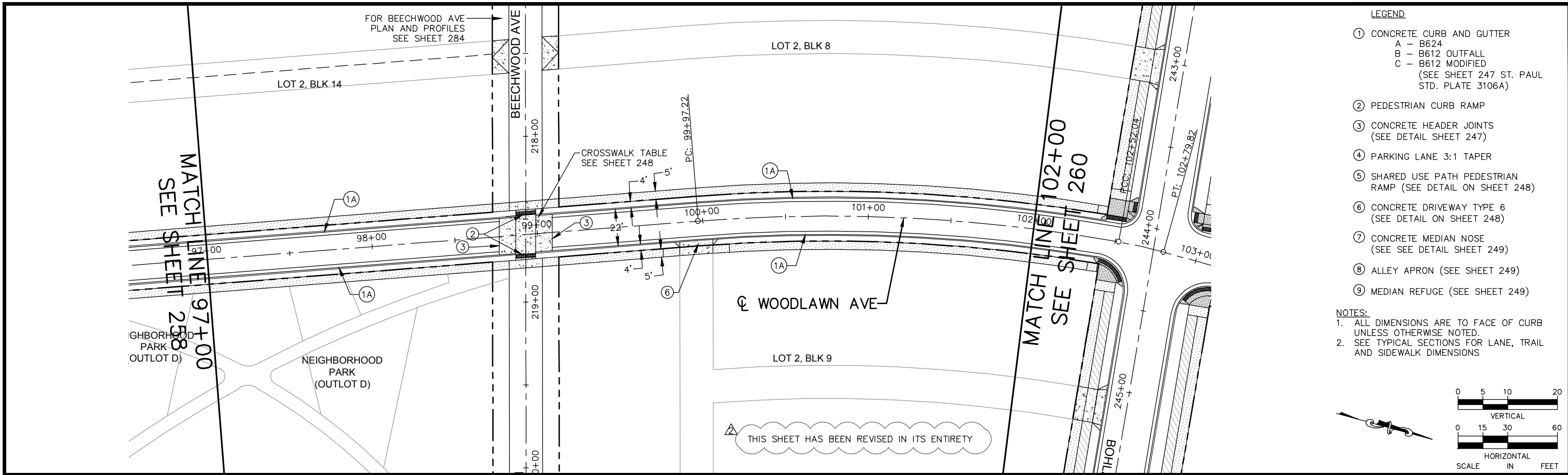


RYAN COMPANIES US, INC.
 FORD SITE REDEVELOPMENT
 CITY OF ST PAUL, MINNESOTA
 FINAL SITE PLAN

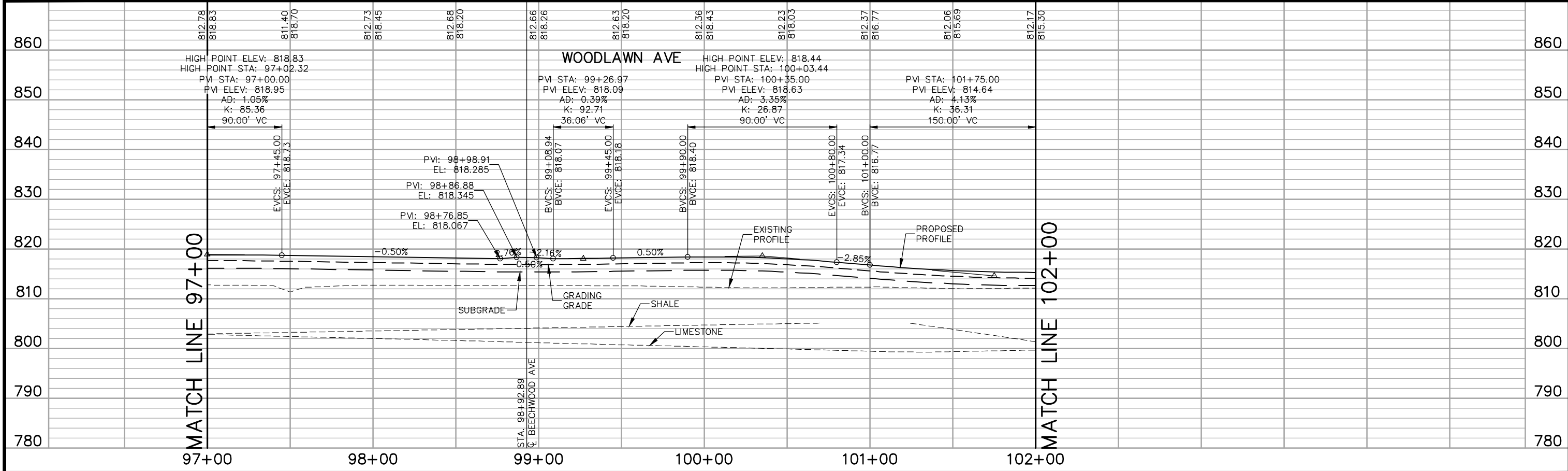
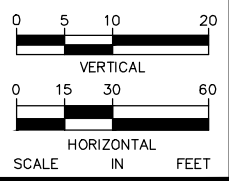
WOODLAWN AVE
 STREET PLAN AND PROFILE
 STA. 91+00 TO STA. 97+00

SHEET NO.
258

522



- LEGEND**
- ① CONCRETE CURB AND GUTTER
 - A - B624
 - B - B612 OUTFALL
 - C - B612 MODIFIED (SEE SHEET 247 ST. PAUL STD. PLATE 3106A)
 - ② PEDESTRIAN CURB RAMP
 - ③ CONCRETE HEADER JOINTS (SEE DETAIL SHEET 247)
 - ④ PARKING LANE 3:1 TAPER
 - ⑤ SHARED USE PATH PEDESTRIAN RAMP (SEE DETAIL ON SHEET 248)
 - ⑥ CONCRETE DRIVEWAY TYPE 6 (SEE DETAIL ON SHEET 248)
 - ⑦ CONCRETE MEDIAN NOSE (SEE SEE DETAIL SHEET 249)
 - ⑧ ALLEY APRON (SEE SHEET 249)
 - ⑨ MEDIAN REFUGE (SEE SHEET 249)
- NOTES:**
1. ALL DIMENSIONS ARE TO FACE OF CURB UNLESS OTHERWISE NOTED.
 2. SEE TYPICAL SECTIONS FOR LANE, TRAIL AND SIDEWALK DIMENSIONS



No.	Date	Revisions	App.
2	7/1/20	BULLETIN #2	GSB

DESIGNED BY:	RJG
DRAWN BY:	RJG
CHECKED BY:	GSB
DATE:	05/27/20
PROJECT NO.	160640016

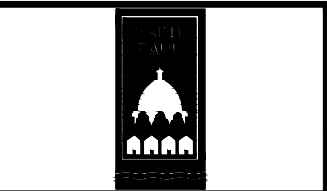
Kimley»Horn

767 EUSTIS STREET, SUITE 100, ST. PAUL, MN 55114
PHONE: 651-645-4197
WWW.KIMLEY-HORN.COM

I HEREBY CERTIFY THAT THIS PLAN, SPECIFICATION OR REPORT WAS PREPARED BY ME OR UNDER MY DIRECT SUPERVISION AND THAT I AM A DULY LICENSED PROFESSIONAL ENGINEER UNDER THE LAWS OF THE STATE OF MINNESOTA.

Gregory S. Brown

GREGORY S. BROWN, PE
DATE: 05/27/20 MN LIC. NO. 22814

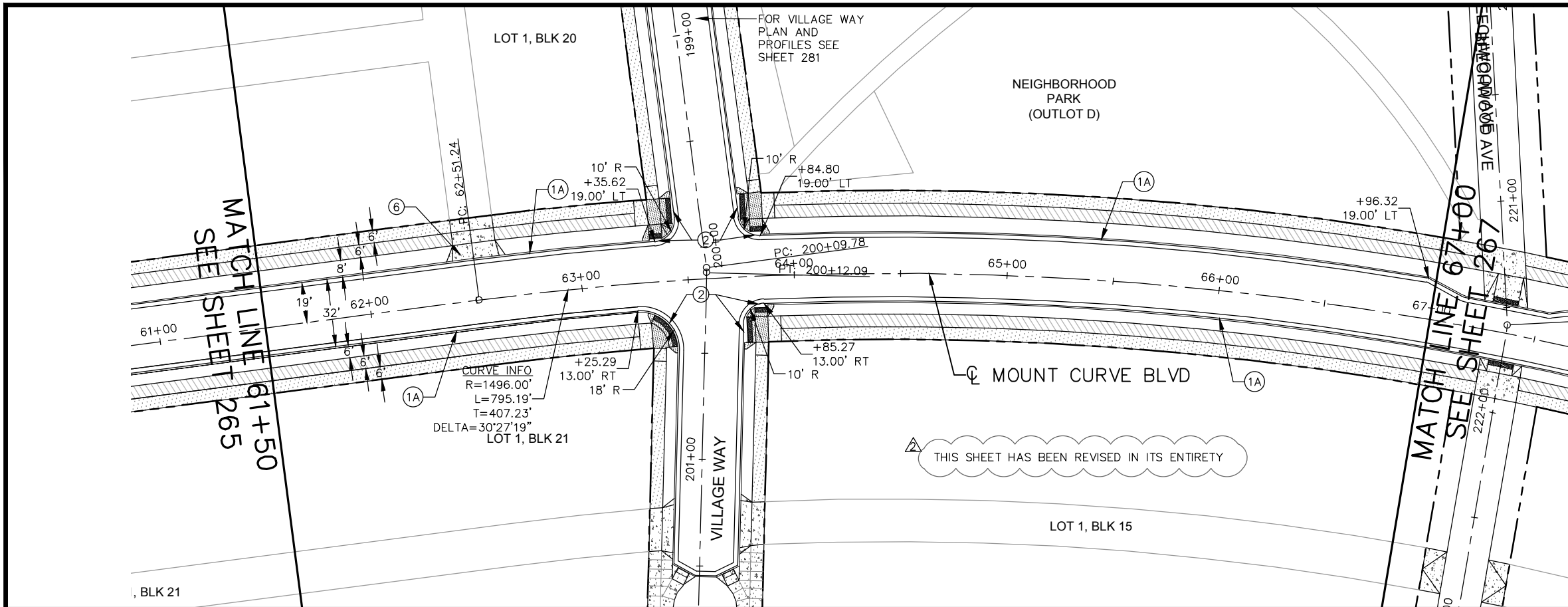


RYAN COMPANIES US, INC.
FORD SITE REDEVELOPMENT
CITY OF ST. PAUL, MINNESOTA
FINAL SITE PLAN

WOODLAWN AVE
STREET PLAN AND PROFILE
STA. 97+00 TO STA. 102+00

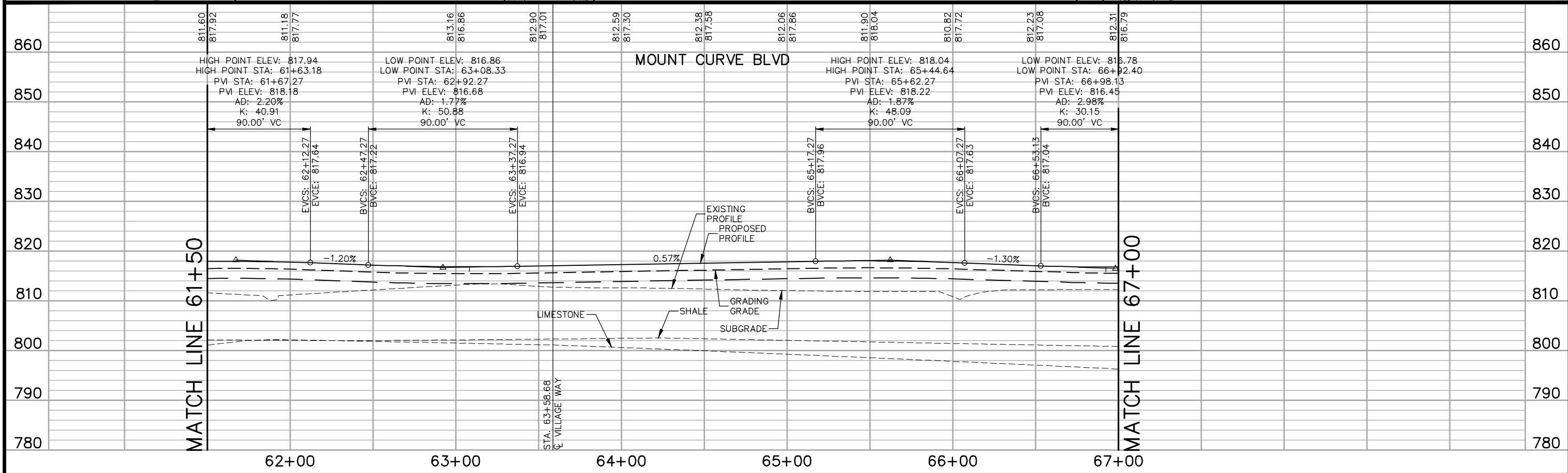
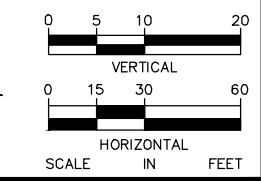
SHEET NO.
259

522



- LEGEND**
- ① CONCRETE CURB AND GUTTER
 - A - B624
 - B - B612 OUTFALL
 - C - B612 MODIFIED (SEE SHEET 247 ST. PAUL STD. PLATE 3106A)
 - ② PEDESTRIAN CURB RAMP
 - ③ CONCRETE HEADER JOINTS (SEE DETAIL SHEET 247)
 - ④ PARKING LANE 3:1 TAPER
 - ⑤ SHARED USE PATH PEDESTRIAN RAMP (SEE DETAIL ON SHEET 248)
 - ⑥ CONCRETE DRIVEWAY TYPE 6 (SEE DETAIL ON SHEET 248)
 - ⑦ CONCRETE MEDIAN NOSE (SEE SEE DETAIL SHEET 249)
 - ⑧ ALLEY APRON (SEE SHEET 249)
 - ⑨ MEDIAN REFUGE (SEE SHEET 249)

- NOTES:**
1. ALL DIMENSIONS ARE TO FACE OF CURB UNLESS OTHERWISE NOTED.
 2. SEE TYPICAL SECTIONS FOR LANE, TRAIL AND SIDEWALK DIMENSIONS



No.	Date	Revisions	App.	DRAWING NAME
2	7/1/20	BULLETIN #2	GSB	Ford Plan/Profile NS
				DESIGNED BY: RJG
				DRAWN BY: RJG
				CHECKED BY: GSB
				DATE: 05/27/20
				PROJECT NO. 160640016

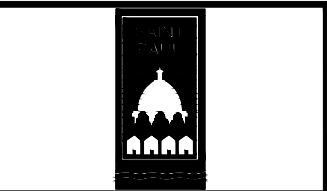
Kimley»Horn

767 EUSTIS STREET, SUITE 100, ST. PAUL, MN 55114
 PHONE: 651-645-4197
 WWW.KIMLEY-HORN.COM

I HEREBY CERTIFY THAT THIS PLAN, SPECIFICATION OR REPORT WAS PREPARED BY ME OR UNDER MY DIRECT SUPERVISION AND THAT I AM A DULY LICENSED PROFESSIONAL ENGINEER UNDER THE LAWS OF THE STATE OF MINNESOTA.

Gregory S. Brown

GREGORY S. BROWN, PE
 DATE: 05/27/20 MN LIC. NO. 22814

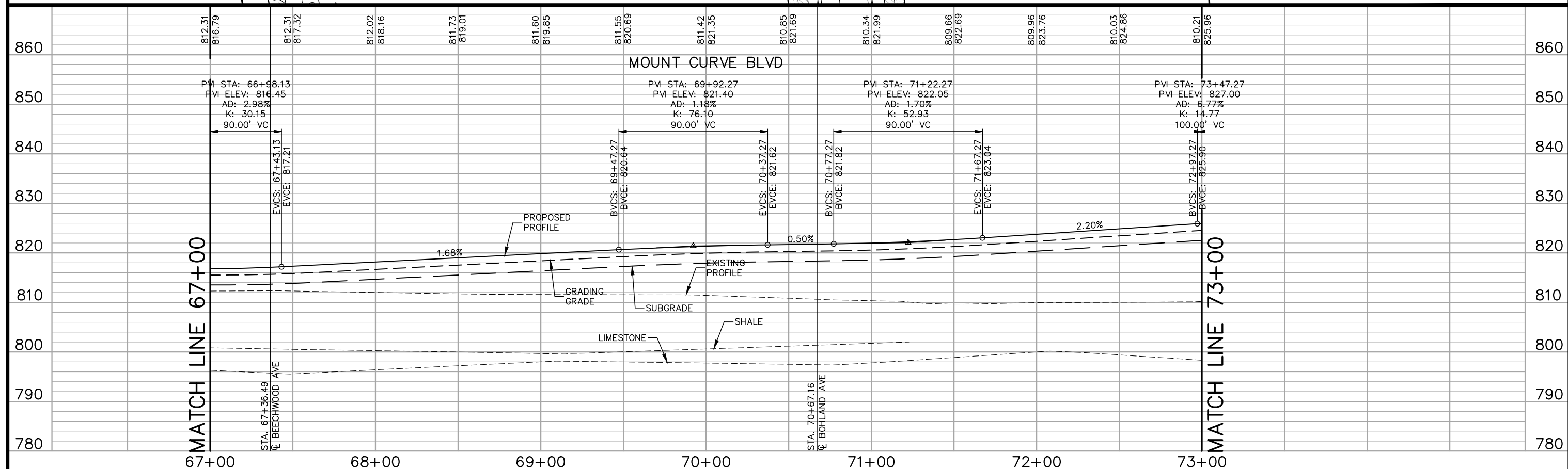
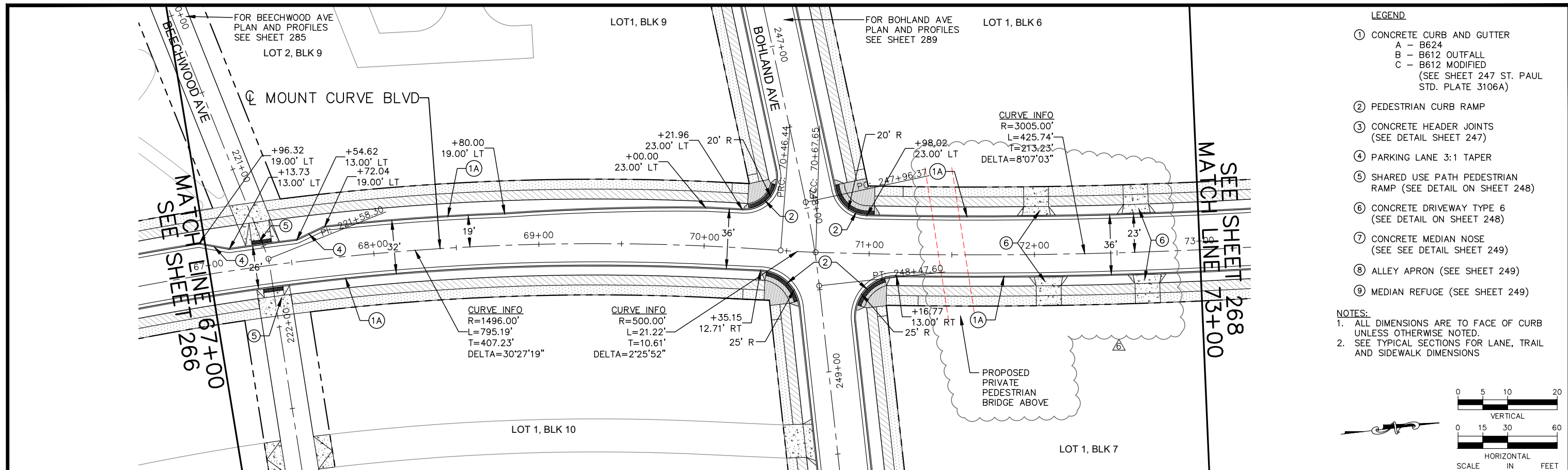


RYAN COMPANIES US, INC.
 FORD SITE REDEVELOPMENT
 CITY OF ST PAUL, MINNESOTA
 FINAL SITE PLAN

MOUNT CURVE BLVD
 STREET PLAN AND PROFILE
 STA. 61+50 TO STA. 67+00

SHEET NO.
266

522



No.	Date	Revisions	App.
2	7/1/20	BULLETIN #2	GSB
6	4/2/21	BULLETIN #6	GSB

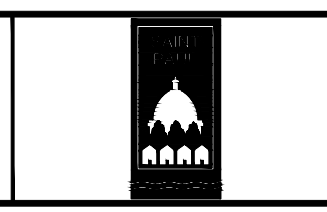
DRAWING NAME Ford Plan/Profile NS	
DESIGNED BY:	RJG
DRAWN BY:	RJG
CHECKED BY:	GSB
DATE:	4/2/21
PROJECT NO.	160640016

Kimley»Horn

767 EUSTIS STREET, SUITE 100, ST. PAUL, MN 55114
PHONE: 651-645-4197
WWW.KIMLEY-HORN.COM

I HEREBY CERTIFY THAT THIS PLAN, SPECIFICATION OR REPORT WAS PREPARED BY ME OR UNDER MY DIRECT SUPERVISION AND THAT I AM A DULY LICENSED PROFESSIONAL ENGINEER UNDER THE LAWS OF THE STATE OF MINNESOTA.

Gregory S. Brown
GREGORY S. BROWN, PE
DATE: 4/2/21 MN LIC. NO. 22814

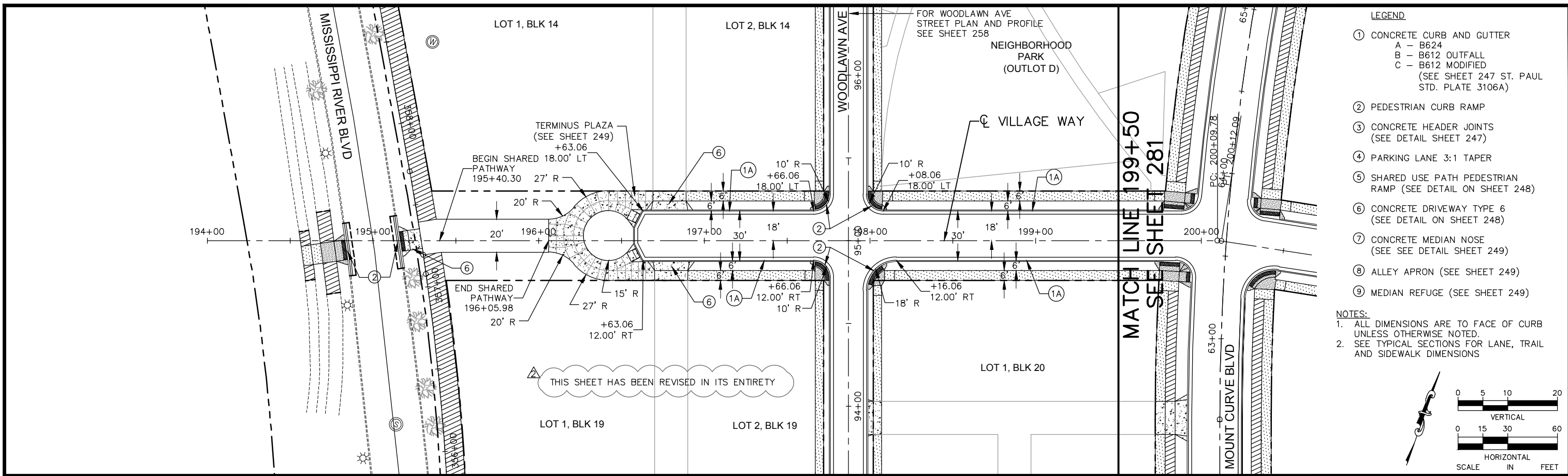


RYAN COMPANIES US, INC.
FORD SITE REDEVELOPMENT
CITY OF ST PAUL, MINNESOTA
FINAL SITE PLAN

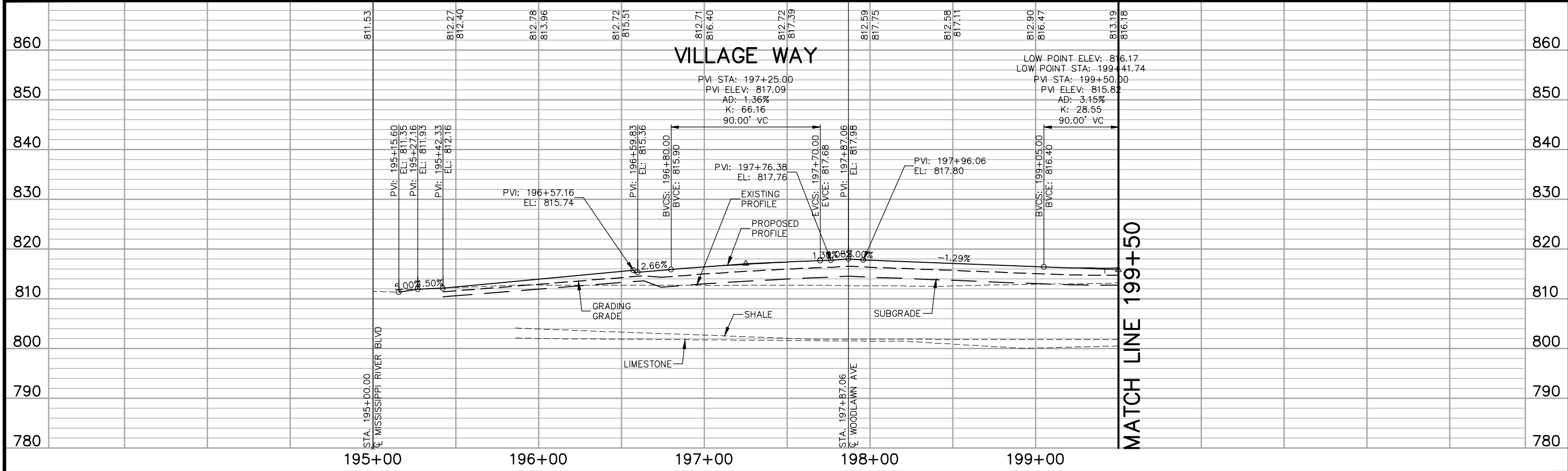
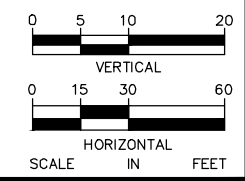
MOUNT CURVE BLVD
STREET PLAN AND PROFILE
STA. 67+00 TO STA. 73+00

SHEET NO.
267

522



- LEGEND**
- ① CONCRETE CURB AND GUTTER
 - A - B624
 - B - B612 OUTFALL
 - C - B612 MODIFIED (SEE SHEET 247 ST. PAUL STD. PLATE 3106A)
 - ② PEDESTRIAN CURB RAMP
 - ③ CONCRETE HEADER JOINTS (SEE DETAIL SHEET 247)
 - ④ PARKING LANE 3:1 TAPER
 - ⑤ SHARED USE PATH PEDESTRIAN RAMP (SEE DETAIL ON SHEET 248)
 - ⑥ CONCRETE DRIVEWAY TYPE 6 (SEE DETAIL ON SHEET 248)
 - ⑦ CONCRETE MEDIAN NOSE (SEE SEE DETAIL SHEET 249)
 - ⑧ ALLEY APRON (SEE SHEET 249)
 - ⑨ MEDIAN REFUGE (SEE SHEET 249)
- NOTES:**
1. ALL DIMENSIONS ARE TO FACE OF CURB UNLESS OTHERWISE NOTED.
 2. SEE TYPICAL SECTIONS FOR LANE, TRAIL AND SIDEWALK DIMENSIONS



No.	Date	Revisions	App.
2	7/1/20	BULLETIN #2	GSB

DRAWING NAME Ford PlanProfile EW.dwg	
DESIGNED BY:	RJG
DRAWN BY:	RJG
CHECKED BY:	GSB
DATE:	05/27/20
PROJECT NO.	160640016

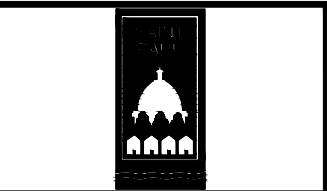
Kimley»Horn

767 EUSTIS STREET, SUITE 100, ST. PAUL, MN 55114
 PHONE: 651-645-4197
 WWW.KIMLEY-HORN.COM

I HEREBY CERTIFY THAT THIS PLAN, SPECIFICATION OR REPORT WAS PREPARED BY ME OR UNDER MY DIRECT SUPERVISION AND THAT I AM A DULY LICENSED PROFESSIONAL ENGINEER UNDER THE LAWS OF THE STATE OF MINNESOTA.

Gregory S. Brown

GREGORY S. BROWN, PE
 DATE: 05/27/20 MN LIC. NO. 22814

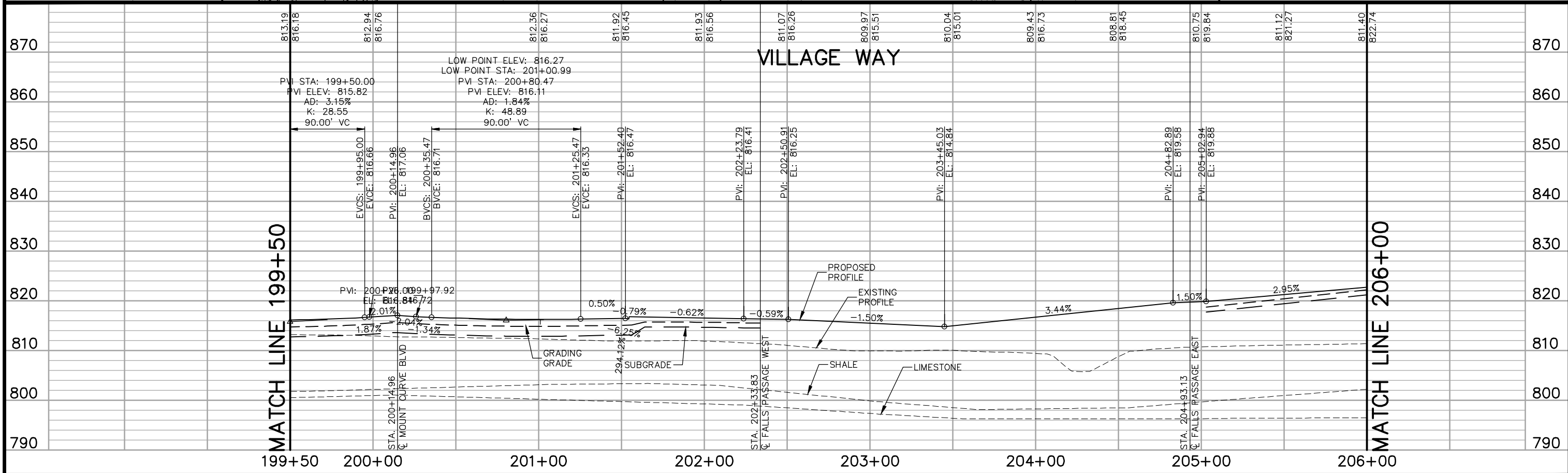
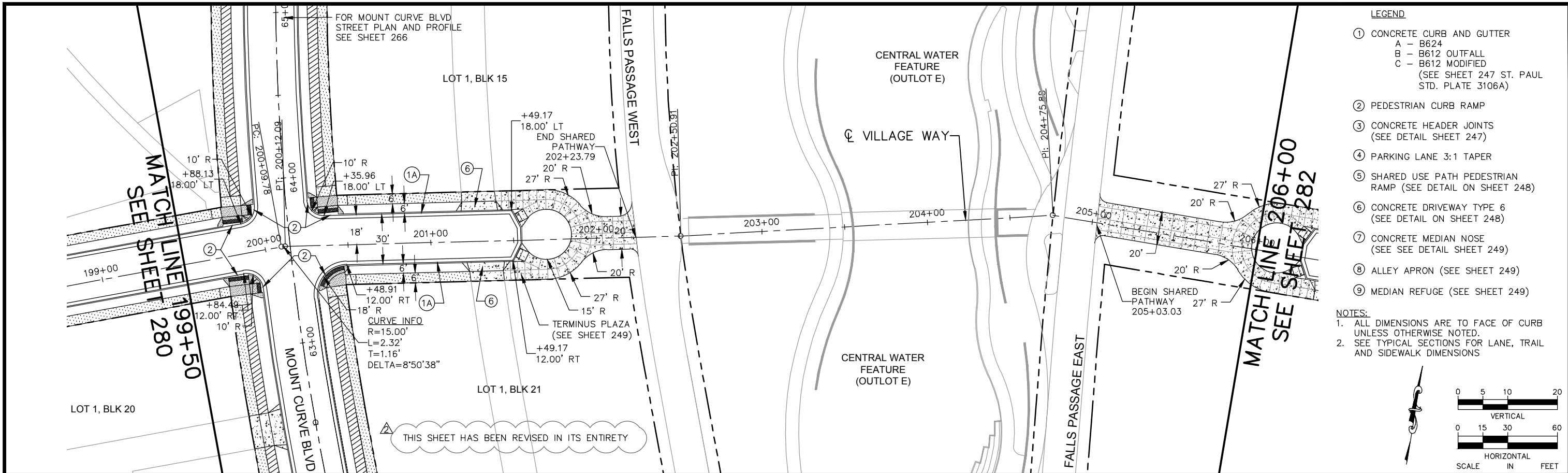


RYAN COMPANIES US, INC.
 FORD SITE REDEVELOPMENT
 CITY OF ST PAUL, MINNESOTA
 FINAL SITE PLAN

VILLAGE WAY
 STREET PLAN AND PROFILE
 STA. 195+00 TO STA. 199+50

SHEET NO.
280

522

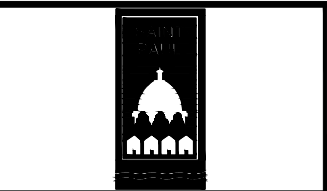


No.	Date	Revisions	App.	DRAWING NAME
2	7/1/20	BULLETIN #2	GSB	Ford PlanProfile EW.dwg
				DESIGNED BY: RJG
				DRAWN BY: RJG
				CHECKED BY: GSB
				DATE: 05/27/20
				PROJECT NO. 160640016

Kimley»Horn
 767 EUSTIS STREET, SUITE 100, ST. PAUL, MN 55114
 PHONE: 651-645-4197
 WWW.KIMLEY-HORN.COM

I HEREBY CERTIFY THAT THIS PLAN, SPECIFICATION OR REPORT WAS PREPARED BY ME OR UNDER MY DIRECT SUPERVISION AND THAT I AM A DULY LICENSED PROFESSIONAL ENGINEER UNDER THE LAWS OF THE STATE OF MINNESOTA.

Gregory S. Brown
 GREGORY S. BROWN, PE
 DATE: 05/27/20 MN LIC. NO. 22814



RYAN COMPANIES US, INC.
 FORD SITE REDEVELOPMENT
 CITY OF ST. PAUL, MINNESOTA
 FINAL SITE PLAN

VILLAGE WAY
 STREET PLAN AND PROFILE
 STA. 199+50 TO STA. 206+00

SHEET NO.
 281

522