

CODE ANALYSIS

TENANT BUILD OUT TO CONVERT A FITNESS STUDIO INTO A RESTAURANT. REMOVAL OF INTERIOR PARTITIONS AND FINISHES. NEW INTERIOR PARTITIONS, FINISHES, KITCHEN EQUIPMENT AND SEATING.

APPLICABLE CODES:
 BUILDING: 2020 MINNESOTA STATE BUILDING CODE (MSBC). THE 2020 MSBC INCLUDES THE 2018 INTERNATIONAL BUILDING CODE (IBC) WITH MINNESOTA AMENDMENTS.
 FIRE PREVENTION: 2020 MINNESOTA STATE FIRE CODE (MSFC). THE 2020 MSFC INCLUDES THE 2018 INTERNATIONAL FIRE CODE (IFC) WITH MINNESOTA AMENDMENTS.
 ACCESSIBILITY: 2020 MINNESOTA ACCESSIBILITY CODE (MAC).
 ENERGY: 2020 MINNESOTA ENERGY CODE
 ELECTRICAL: 2020 NATIONAL ELECTRICAL CODE (NFPA 70)
 MECHANICAL: 2020 MINNESOTA MECHANICAL AND FUEL AND GAS CODE
 PLUMBING: 2015 PLUMBING CODE
 OTHER: NATIONAL FIRE PROTECTION ASSOCIATION (NFPA) STANDARDS, AS REFERENCED BY THE MSBC AND MSFC

FIXTURE COUNTS
 OCCUPANCY TYPE A-2 & B, TABLE 2902.1

	WATERCLOSETS M/F	SINKS M/F	DRINKING FOUNTAINS	OTHER (SERVICE SINK)
A-2: 1 PER 75	A-2: 1 PER 200	A-2: 1 PER 500*	1	
B: 1 PER 25	B: 1 PER 40	0*		
REQUIRED	1 M/1 F	1 M/1 F	1	1
PROVIDED	2 M/2 F	1 M/1 F	0*	1

*DRINKING FOUNTAIN NOT REQUIRED IN RESTAURANTS

EGRESS REQUIREMENTS
 EGRESS WIDTH REQUIRED: 17.85"
 EGRESS WIDTH PROVIDED: 2 DOORS AT 34"
 NUMBER OF EXISTS REQUIRED: 2
 NUMBER OF EXIT PROVIDED: 2
 COMMON PATH OF TRAVEL ALLOWED: 75'-0"
 COMMON PATH OF TRAVEL ACTUAL: 53'-0"
 EXIT ACCESS TRAVEL DISTANCE ALLOWED: 250'-0"
 EXIT ACCESS TRAVEL DISTANCE ACTUAL: 127'-9"

CODE INFORMATION

ROOM	ROOM NAME	OCC CLASS	USE DESCRIPTION	AREA	AREA/OCC	GROSS/NET	LOAD
103	ORDERING	B	KITCHEN, COMMERCIAL	67 SF	200 SF	GROSS	1
109	PREP	B	KITCHEN, COMMERCIAL	186 SF	200 SF	GROSS	1
111	JANITOR	B	KITCHEN, COMMERCIAL	34 SF	200 SF	GROSS	1
112	WAREWASHING	B	KITCHEN, COMMERCIAL	98 SF	200 SF	GROSS	1
104	BAR	B	KITCHEN, COMMERCIAL	214 SF	200 SF	GROSS	2
110	KITCHEN STORAGE	B	KITCHEN, COMMERCIAL	256 SF	200 SF	GROSS	2
108	OFFICE	B	KITCHEN, OFFICE	149 SF	150 SF	GROSS	1
106	DINING	A-2	SEATING - TABLES AND CHAIRS	1615 SF	15 SF	NET	108
101	AV/STG	B	STORAGE	28 SF	200 SF	GROSS	1
TOTAL: 9							118

USE AND OCCUPANCY CLASSIFICATIONS
 PRIMARY OCCUPANCY - A-2 - ASSEMBLY - RESTAURANT INCLUDING ASSOCIATED COMMERCIAL KITCHEN
BUILDING CONSTRUCTION TYPE
 TYPE IIB - ASSUMED FULLY SPRINKLERED

ACCESSIBLE SEATING
 MSAC SECTION 1109.11 SEATING AT TABLES, COUNTERS OR WORK SURFACES.
 AT LEAST 5% AND NOT LESS THAN ONE TABLE SHALL BE ACCESSIBLE
 TOTAL SEATS: 109 SEATS
 5% OF SEATS: 5.45, ROUND UP TO 6 SEATS



HABANERO TACO

80 SNELLING AVE N
 ST PAUL, MN 55105

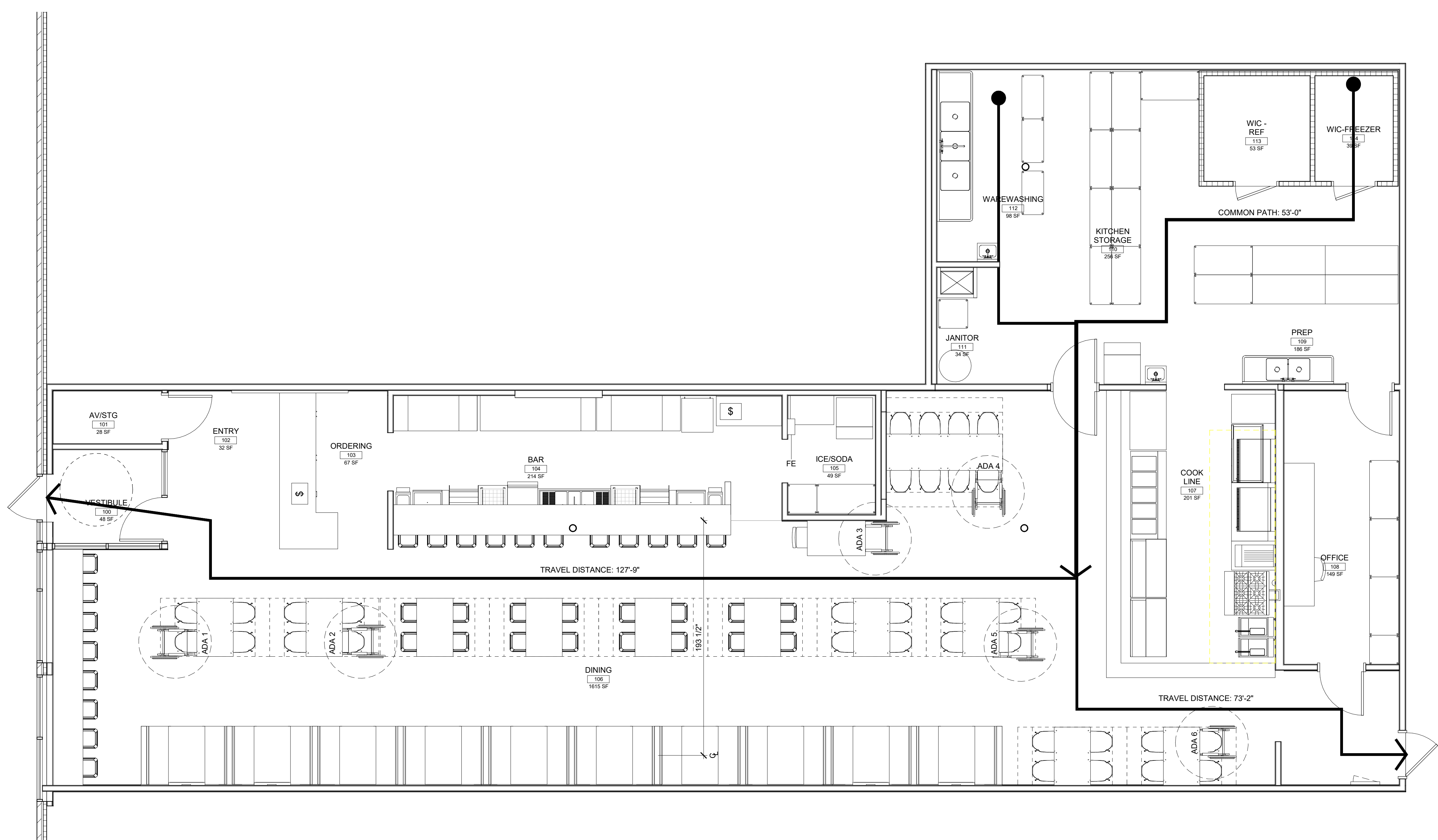
I HEREBY CERTIFY THAT THIS PLAN, SPECIFICATION, OR REPORT WAS PREPARED BY ME OR UNDER MY DIRECT SUPERVISION AND THAT I AM A DULY LICENSED ARCHITECT UNDER THE LAWS OF THE STATE OF MINNESOTA.
 NAME: ANDREA HAMMEL WOLLAK

SIGNATURE: *Andrea Hammel Wollak*
 DATE: 08.31.22 LICENSE #48183

2	ISSUED FOR PERMIT	09.19.22
1	ISSUED FOR PRICING	08.22.22
NO	ISSUE	DATE
JOB NUMBER		22.031.0623

LIFE SAFETY PLAN - MAIN LEVEL

A10.00



A5 MAIN LEVEL - LIFE SAFETY PLAN

