

PROJECT REPORT – August 7, 2023

PROGRESS: SCHEDULE = **30% COMPLETE**
\$78.4M PAID OF \$235M TOTAL (**33% SPENT**)

WORK COMPLETED IN THE LAST MONTH

- Rapid progress on the recarbonation and ozonation basins continues. In only one month of work, the basins progressed from 60% complete to 72% complete. To illustrate the difference between summer and winter construction, consider this: Construction on these basins began in October of 2022 and was 25% complete at the end of March 2023 (average 4.2% of total work complete/month through the winter). Since April, we've averaged 11.8% of the total work completed/month. During the warm-weather months, we've been about 3 times more productive than we were in the winter.
- Clarifier structures are now 85% complete and continue to be on track for an early completion. Equipment installation inside of the clarifiers will begin in the fall.
- Excavation for the new lime building and chemical storage facility has begun. This facility is the last major aspect of the new treatment plant to be constructed and is on the project's critical path. Unlike the facilities that we've been working on thus far, the lime building will be mostly an above-ground structure. Now that the clarifier structures are mostly complete, we're able to begin work on this facility.
- The phosphoric acid scope that was added to the project is progressing well. Tanks for the project are being procured presently, and we're beginning to tackle the auxiliary work (eyewash stations, HVAC, etc.)
- SPRWS and Jacobs completed a walkthrough of all construction quality issues. Jacobs and their construction partners demonstrated that construction quality to date has been excellent as expected.

PROJECT MANAGER'S COMMENTS

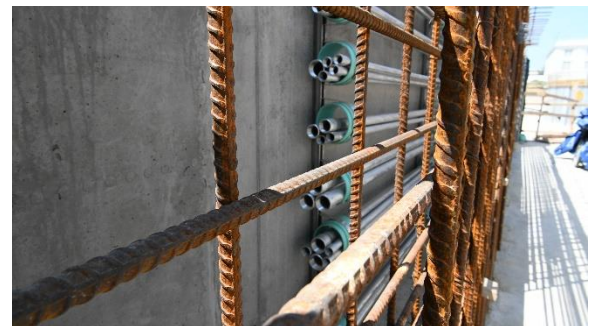
Access to the site is quite limited now as many of the spaces under construction now have progressed to the point that they are now confined space entry points. Before reaching this point in the project, SPRWS was able to complete a thorough walkthrough of the site on July 3, 2023. It served as a great opportunity for staff to see the facility coming to life. There was no construction on site for the day, so we were able to explore most portions of the new facility.



Che Fei Chen, Production Div. Mgr., looks through a manway in one of the clarifiers



The scaffolding that supported the dome roofs in the clarifiers is coming out now that roofs have cured



Electrical conduits have been installed in locations where future access will be limited