

STRUCTURE INFORMATION TABLE				
NO.	STRUCT.	RIM	INVERT(S)	DIRECTION
5337	CB	224.22	220.02	
5603	CB	226.68	219.59	
5733	CB	226.38	217.96	
5900	CB	229.11	224.39	
5920	CB	222.92	222.37 224.38	S N
5925	CB	226.74	217.52	
5989	CB	229.10	225.77	
6066	CB	222.97	218.36	
6081	CB	223.44	219.20	
6102	STMH	224.02	219.58	
6112	CB	223.47	220.02	
6170	CB	224.68	221.68	
6202	STMH	225.29	218.07	
6220	STMH	224.73	218.96	
6222	STMH	224.22	218.33 217.62	S SW
6256	CB	223.59	221.13	
6276	STMH	224.76	216.67	
6315	CB	226.50	223.44	
6316	CB	223.03	219.37	
10205	CB	229.72	225.98	
10207	CB	229.72	225.45 225.26	W NE
10401	CB	229.81	224.80 217.81	SW E
10439	STMH	231.11	226.20 224.42	N SE
10452	CB	230.08	226.44	
11190	CB	225.28	217.48	
11222	CB	226.73	215.81 215.38	S E
11238	CB	226.11	216.68	
11300	CB	225.14	215.90	
11311	CB	225.41	215.92	
11334	CB	225.58	222.28	
15607	STMH	228.83	225.88 215.37 214.53	N W E
20264	STMH	227.52	221.80	PER PLAN
20444	STMH	228.43	221.42	PIPE-N
21142	CB	223.12	218.30	
21159	CB	223.10	218.35	
21271	STMH	224.84	218.05	
21274	STMH	223.47	218.14	
21476	CB	223.48	220.56	SUMP
21544	CB	225.04	217.36 216.28	S NW,E
135033	CB	231.65	226.95 223.24 0.00	12" PVC-E SUMP TUCKED-NE

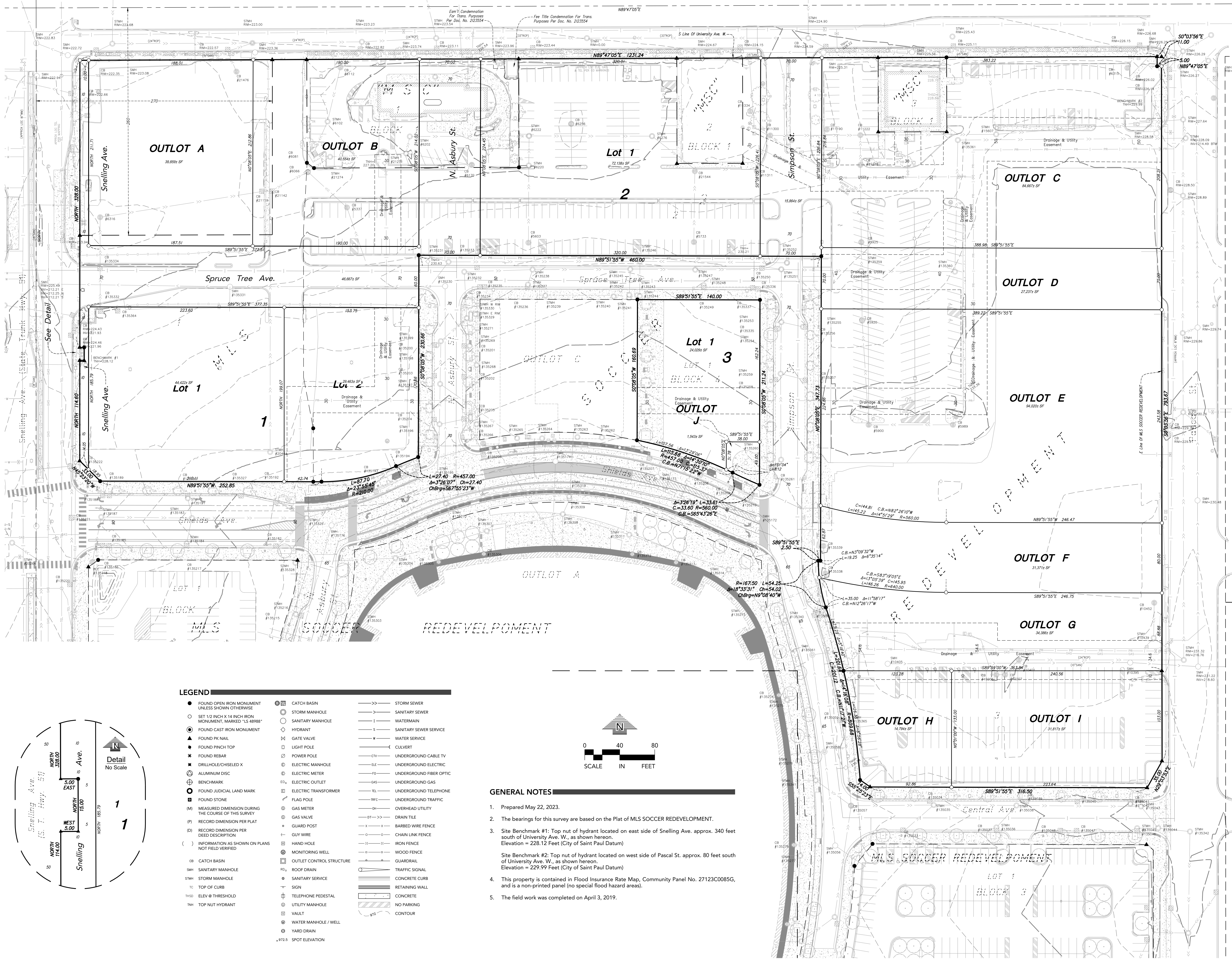
STRUCTURE INFORMATION TABLE				
NO.	STRUCT.	RIM	INVERT(S)	DIRECTION
135034	CB	231.15	227.55 226.57 222.87	15" RCP-SE 12" PVC-E SUMP
135035	STMH	231.18	226.78 222.22 222.08	15" RCP-NW 20" RCP-W 20" RCP-E
135036	STMH	230.37		
135037	CB	230.33	224.97 222.05	15" RCP-NE SUMP
135038	STMH	230.20	224.40 221.43 221.48	15" RCP-SW 20" RCP-E 20" RCP-W
135039	CB	229.78	225.84 226.22 224.63 223.84	12" RCP-E 12" PVC-W 6" PVC-NW 6" RCP-NE
135040	CB	229.36	225.87 225.82 221.94	12" PVC-W 12" PVC-E SUMP
135041	CB	229.90	225.80 225.83 225.76	12" PVC-W 15" RCP-E SUMP
135042	STMH	230.00	223.86 223.59 219.52	6" PVC-W 20" RCP-S 20" RCP-SE
135043	STMH	230.28	222.76 220.86 220.38	15" RCP-NW 20" RCP-W 20" RCP-SE
135044	STMH	230.39	222.99 220.50 220.48	15" RCP-SW 20" RCP-W 20" RCP-NW
135045	STMH	230.26	223.46 219.76	N 6" PVC SUMP
135046	CB	229.99	226.96 219.61 0.00	WEIR SUMP TUCKED-W
135047	CB	229.50	225.40 225.38 221.52	12" PVC-E 12" PVC-W SUMP
135048	CB	229.56	225.54 221.56	12" PVC-E SUMP
135057	CB	232.43	222.53 224.40 224.04 225.18	21" RCP-E 15" RCP-S 18" RCP-NW 15" RCP-N
135059	CB	231.68	229.78 223.40	TOP WEIR SUMP
135060	CB	231.98	228.98 228.98 225.16	S 12" PVC N 12" PVC SUMP
135062	CB	232.29	228.96 224.85	S 12" PVC SUMP
135182	CB	231.34	227.18 225.63 221.70	15" RCP-NE 12" PVC-W SUMP
135183	STMH	229.33	221.90 221.44 221.53 221.47	15" RCP-S 15" RCP-N 15" RCP-W 15" RCP-E
135184	STMH	228.72	222.36 218.32 220.67	15" RCP-N SUMP WEIR TUCKED
135185	CB	226.76	224.01 223.89 220.21	12" PVC-E 12" PVC-W SUMP
135186	CB	226.71	224.07 220.21	E 12" PVC SUMP
135187	STMH	226.91	222.04 222.04	8" PVC-S 15" RCP-E
135188	CB	226.40	223.68 219.81	12" PVC-E SUMP
135189	CB	226.61	223.96 223.80 219.95	12" PVC-E 12" PVC-W SUMP
135190	CB	228.60	225.55 224.75 223.85	12" PVC-E WEIR 12" PVC-W SUMP
135191	STMH	228.80	222.18 218.42	15" RCP-S SUMP
135192	CB	231.10	227.70 221.78	15" RCP-SE SUMP
135193	CB	231.54	227.89	15" RCP-E
135194	CB	231.26	227.41 227.36 226.63	15" RCP-W 15" RCP-NE SUMP
135195	STMH	231.53	223.23 220.05 219.90	15" RCP-S 18" RCP-N 18" RCP-W
135196	STMH	230.48	226.46 219.75 219.72	15" RCP-NW 18" RCP-S 24" RCP-N TUCKED-NE
135197	STMH	229.24	221.84 219.48 219.42	15" RCP-SE 24" RCP-S 24" RCP-N
135198	STMH	228.10	223.53 219.77	NE 15" RCP SUMP
135199	STMH	228.10	223.10 219.01 218.97	15" SW 26" NE 24" S
135200	CB	228.05	226.36 219.78	WEIR SUMP
135201	CB	228.12	219.88	SUMP
135202	CB	229.01	225.23 225.07 221.29	12" PVC-W 12" PVC-S SUMP

STRUCTURE INFORMATION TABLE				
NO.	STRUCT.	RIM	INVERT(S)	DIRECTION
135203	CB	228.99	225.04 225.01 221.29	12" PVC-S 12" PVC-N SUMP
135204	CB	230.24	225.96 225.07 221.52 226.70	15" RCP-S 12" PVC-N SUMP 15" RCP-SE
135205	CB	230.08	227.08 226.48 225.26 221.20	15" RCP-SE 15" RCP-SW 12" PVC-N SUMP
135206	CB	231.15	227.25 225.83	15" RCP-N SUMP
135207	CB	231.28	226.45	15" RCP-E
135208	CB	231.00	226.17 226.15 225.97	15" RCP-W 15" RCP-E SUMP
135209	CB	231.30	225.90 225.83 225.76	15" RCP-W 15" RCP-E SUMP
135210	CB	231.50	225.45 225.55 223.14	15" RCP-N 6" PVC-NE 15" RCP-W SUMP
135213	CB	231.79	228.33 224.49	12" PVC-N SUMP
135214	CB	231.61	226.27 228.00 225.12	12" PVC-S 12" PVC-N SUMP
135215	CB	231.74	228.04 228.00 224.20	15" RCP-N 12" PVC-N SUMP
135216	STMH	232.36	223.97	WEIR TUCKED SUMP
135217	CB	228.48	223.44 218.31 228.48	12" PVC-W SUMP TUCKED-E
135218	BEE	227.52	222.42 222.46 220.68	6" PVC-SE 8" PVC-N SUMP
135220	CB	227.26	223.36	12" DIP-N
135221	CB	226.48	223.44	PIPE-N,S
135222	CB	225.99	223.52	PIPE-S,W
135231	STMH	227.64	223.48 223.41 223.38	18" RCP-NW 18" RCP-SW 24" RCP-E
135232	STMH	227.35	218.54 218.48 0.00	26" RCP-S 26" RCP-E TUCKED-NE
135233	CB	227.14	223.46	15" RCP-W
135234	CB	226.95	224.44 220.40	12" PVC-E SUMP
135235	CB	226.99	224.24 220.48 220.67	W SUMP 12" PVC-E SUMP
135236	CB	227.54	0.00 218.76	TUCKED-N SUMP
135237	STMH	227.92	222.77 218.91	15" RCP-N SUMP
135238	STMH	228.11	218.40 0.00 218.43	24" RCP-EW TUCKED-S E
135239	STMH	228.40	215.09	
135240	STMH	229.26	215.31	
135241	STMH	229.42	221.08 217.92	WEIR 24" PVC-W
135242	STMH	229.47	219.20 217.97	N SUMP
135243	STMH	229.38	217.31 222.46	SEPERATOR
135244	STMH	229.38	213.24	
135245	STMH	228.56	218.12 217.64 217.56	24" RCP-S 24" RCP-W 24" RCP-E
135246	STMH	229.26	222.70 222.58 0.00	24" RCP-W 24" RCP-E TUCKED-S
135247	STMH	228.10	0.00 217.02 216.98	TUCKED-S 26" RCP-E 24" RCP-W
135248	STMH	228.06	222.98 219.14	15" RCP-N SUMP
135249	CB	227.85	219.48	SUMP
135250	CB	227.14	223.90	15" RCP-E
135251	STMH	227.56	216.00 216.25	36" RCP-E 36" RCP-W
135252	STMH	227.64	0.00 222.82	TUCKED-NESE 24" RCP-W
135253	STMH	228.20	223.71 223.70 223.62 224.14	18" RCP-N 15" RCP-E 15" RCP-SW S

STRUCTURE INFORMATION TABLE				
NO.	STRUCT.	RIM	INVERT(S)	DIRECTION
135254	STMH	228.02	0.00 219.68	TUCKED-NE SUMP
135255	STMH	227.99	223.83 219.67	15" RCP-W SUMP
135256	CB	227.91	219.67	SUMP
135257	CB	228.80	225.78 225.60 221.58	12" PVC-N 15" RCP-W SUMP
135258	CB	228.86	225.19 225.18 221.44	12" PVC-S 12" PVC-N SUMP
135259	STMH	229.05	225.00 225.07 224.95	15" RCP-N,S 15" RCP-E N
135260	STMH	230.34	226.39 226.41	15" RCP-N 15" RCP-SW
135261	CB	230.29	226.42 225.28 224.85 221.19	15" RCP-NE 12" PVC 15" RCP-SW SUMP
135262	STMH	232.12	215.30	TANK A
135263	STMH	232.20	215.19	TANK A
135264	STMH	232.08	220.82	VAULT
135265	STMH	232.07	228.27 226.17 225.87	3" PVC-W VENT 15" RCP BOTTOM
135266	CB	231.74	202.76	TANK B
135267	STMH	231.25	203.03	BTM
135268	STMH	229.68	203.30	BTM
135269	STMH	228.68	0.00 219.96	ALL INV TUCKED SUMP
135270	STMH	232.67	225.91 224.13	6" PVC-SE-SW 15" RCP-N
135271	STMH	227.97	218.90 218.67 0.00	26" N 26" SW TUCKED-S
135273	STMH	233.70	227.82 227.50 227.38	15" PVC-NE 21" PVC-NW 18" PVC-S
135274	CB	233.90	228.31 227.60	12" PVC-E SUMP
135275	STMH	233.77	230.60 227.90 227.84	10" PVC-W 21" PVC-N 18" PVC-S
135276	STMH	233.77	228.39 228.26	18" PVC-N 18" PVC-S
135277	STMH	233.82	229.66 228.96 228.90	8" PVC-W 18" PVC-N 15" PVC-S
135278	CB	233.91	229.01 228.35	12" PVC-E SUMP
135301	STMH	233.68	227.84 226.64 226.40	15" RCP-SW 27" PVC-S 27" PVC-N
135302	CB	233.86	227.59 227.06	12" PVC-W SUMP
135303	STMH	233.62	229.57 226.00 225.95	12" PVC-SE 30" PVC-NE 27" PVC-S
135304	STMH	233.58	226.06 225.60 225.58	15" RCP-W 30" PVC-NE 30" PVC-SW
135305	CB	233.82	227.80 227.35	12" PVC-N SUMP
135306	CB	233.88	227.70 227.23	12" PVC-N SUMP
135307	STMH	233.62	225.16 225.02 225.02	30" PVC-W 30" PVC-E SUMP
135308	STMH	233.47	227.97 224.93 224.85 223.52	12" PVC-S 30" PVC-W 24" PVC-E 36" RCP-N
135309	STMH	233.27	223.40 223.11	36" RCP-S 36" RCP-N
135310	STMH	233.24	229.70 223.40 218.2	

KITTSONDALE, BEING AUDITOR'S SUBDIVISION NO. 27, ST. PAUL, MINN.

J. F. EISENMEYERS 2ND ADD.



CADD QUALIFICATION

CADD files prepared by the Consultant for this project are the property of the Consultant and shall not be used for any other project without the written approval of the Consultant. With the Consultant's approval, others may be permitted to obtain copies of the CADD files for information and reference only. All intellectual or confidential information, additions, or deletions to these CADD files shall be made at the full risk of the party making such modifications. The Consultant shall not be held responsible and shall not be liable for any and all responsibilities, claims, and liabilities.

SUBMITTAL/REVISIONS

05/22/23	CITY SUBMITTAL
06/13/23	ADDED ROW
06/27/23	REMOVED ROW
07/13/23	CITY COMMENTS

PROFESSIONAL SIGNATURE

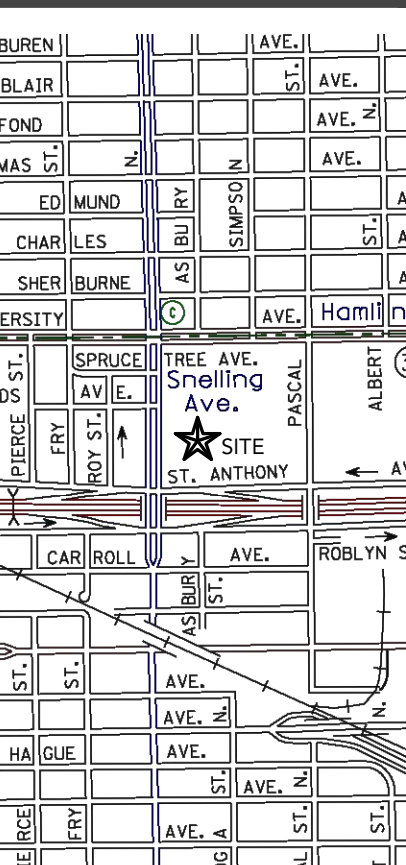
I hereby certify that this survey, plan or report was prepared by me or under my direct supervision and that I am a duly Licensed Land Surveyor under the laws of the State of Minnesota.

License No. 48988 Date 5/22/23

QUALITY CONTROL

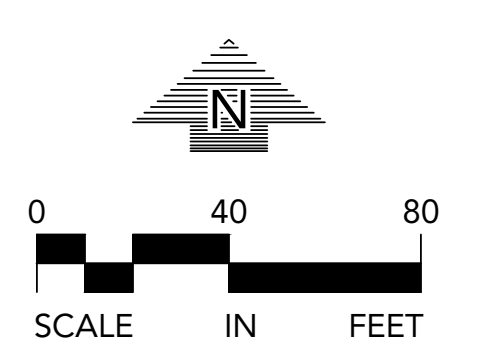
Locks Project No. 160285 Project Lead: MLS Drawn By: SFM Checked By: BRS Field Crew:

VICINITY MAP



**LEGEND**

● FOUND OPEN IRON MONUMENT UNLESS SHOWN OTHERWISE	○ SET 1/2 INCH X 14 INCH IRON MONUMENT, MARKED "LS 48988"	● FOUND CAST IRON MONUMENT	▲ FOUND PK NAIL	● FOUND FINCH TOP	✱ FOUND REBAR	⊗ DRILLHOLE/CHISELED X	⊕ ALUMINUM DISC	⊙ BENCHMARK	○ FOUND JUDICIAL LAND MARK	● FOUND STONE	(M) MEASURED DIMENSION DURING THE COURSE OF THIS SURVEY	(P) RECORD DIMENSION PER PLAT	(D) RECORD DIMENSION PER DEED DESCRIPTION	(I) INFORMATION AS SHOWN ON PLANS NOT FIELD VERIFIED	CB CATCH BASIN	SMH SANITARY MANHOLE	STH STORM MANHOLE	TC TOP OF CURB	THSD ELEV @ THRESHOLD	TNH TOP NUT HYDRANT	○ CATCH BASIN	○ STORM MANHOLE	○ SANITARY MANHOLE	○ HYDRANT	⊗ GATE VALVE	⊗ LIGHT POLE	⊗ POWER POLE	⊗ ELECTRIC MANHOLE	⊗ ELECTRIC METER	⊗ ELECTRIC OUTLET	⊗ ELECTRIC TRANSFORMER	⊗ FLAG POLE	⊗ GAS METER	⊗ GAS VALVE	⊗ GUARD POST	⊗ GUY WIRE	⊗ HAND HOLE	⊗ MONITORING WELL	⊗ OUTLET CONTROL STRUCTURE	⊗ ROOF DRAIN	⊗ SANITARY SERVICE	⊗ SIGN	⊗ TELEPHONE PEDESTAL	⊗ UTILITY MANHOLE	⊗ VAULT	⊗ WATER MANHOLE / WELL	⊗ YARD DRAIN	⊗ SPOT ELEVATION	— STORM SEWER	— SANITARY SEWER	— WATERMAIN	— SANITARY SEWER SERVICE	— WATER SERVICE	— CULVERT	— CITY UNDERGROUND CABLE TV	— ELECTRIC UNDERGROUND ELECTRIC	— UNDERGROUND FIBER OPTIC	— GAS UNDERGROUND GAS	— UNDERGROUND TELEPHONE	— UNDERGROUND TRAFFIC	— OVERHEAD UTILITY	— DRAIN TILE	— BARBED WIRE FENCE	— CHAIN LINK FENCE	— IRON FENCE	— WOOD FENCE	— GUARDRAIL	— TRAFFIC SIGNAL	— CONCRETE CURB	— RETAINING WALL	— CONCRETE	— NO PARKING	— CONTOUR
---	---	----------------------------	-----------------	-------------------	---------------	------------------------	-----------------	-------------	----------------------------	---------------	---	-------------------------------	---	--	----------------	----------------------	-------------------	----------------	-----------------------	---------------------	---------------	-----------------	--------------------	-----------	--------------	--------------	--------------	--------------------	------------------	-------------------	------------------------	-------------	-------------	-------------	--------------	------------	-------------	-------------------	----------------------------	--------------	--------------------	--------	----------------------	-------------------	---------	------------------------	--------------	------------------	---------------	------------------	-------------	--------------------------	-----------------	-----------	-----------------------------	---------------------------------	---------------------------	-----------------------	-------------------------	-----------------------	--------------------	--------------	---------------------	--------------------	--------------	--------------	-------------	------------------	-----------------	------------------	------------	--------------	-----------



- GENERAL NOTES**
- Prepared May 22, 2023.
  - The bearings for this survey are based on the Plat of MLS SOCCER REDEVELOPMENT.
  - Site Benchmark #1: Top nut of hydrant located on east side of Snelling Ave. approx. 340 feet south of University Ave. W., as shown hereon. Elevation = 228.12 Feet (City of Saint Paul Datum)
  - Site Benchmark #2: Top nut of hydrant located on west side of Pascal St. approx. 80 feet south of University Ave. W., as shown hereon. Elevation = 229.99 Feet (City of Saint Paul Datum)
  - This property is contained in Flood Insurance Rate Map, Community Panel No. 27123C0085G, and is a non-printed panel (no special flood hazard areas).
  - The field work was completed on April 3, 2019.