

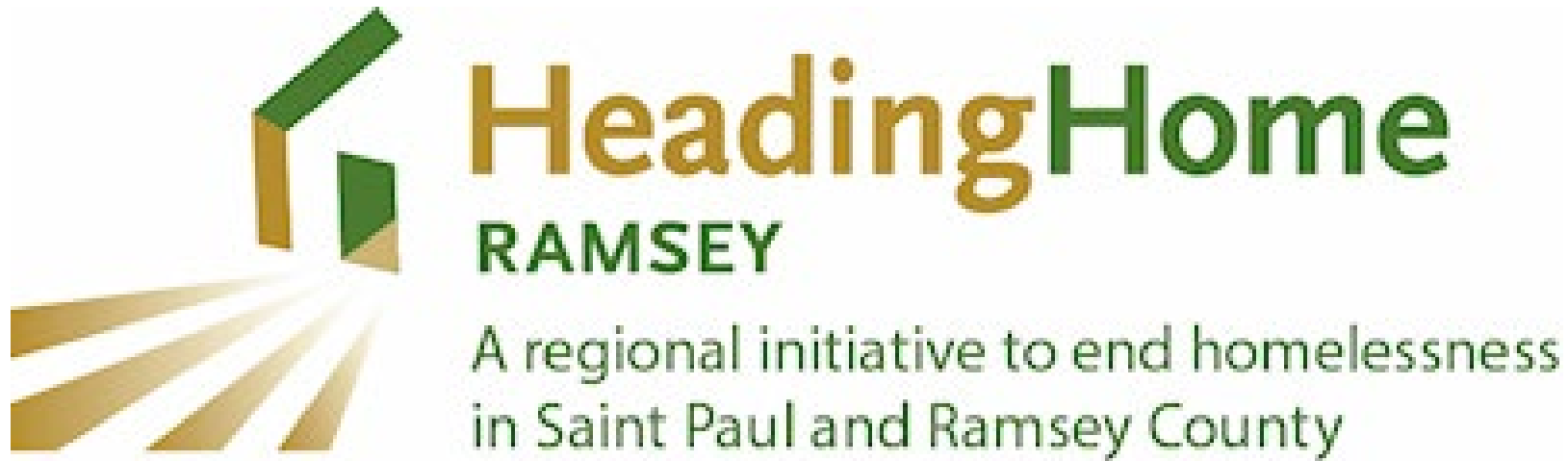


STPAUL.GOV

# **Unsheltered Update:**

**Heading Home Ramsey Continuum of Care;  
Ramsey County;  
City of Saint Paul Homeless Assistance Response Team;  
PED Housing Team**

**City County Organizational Committee Meeting**  
**8.17.2022**



## State Award Update from the CoC

Maggie Dreon, Executive Director



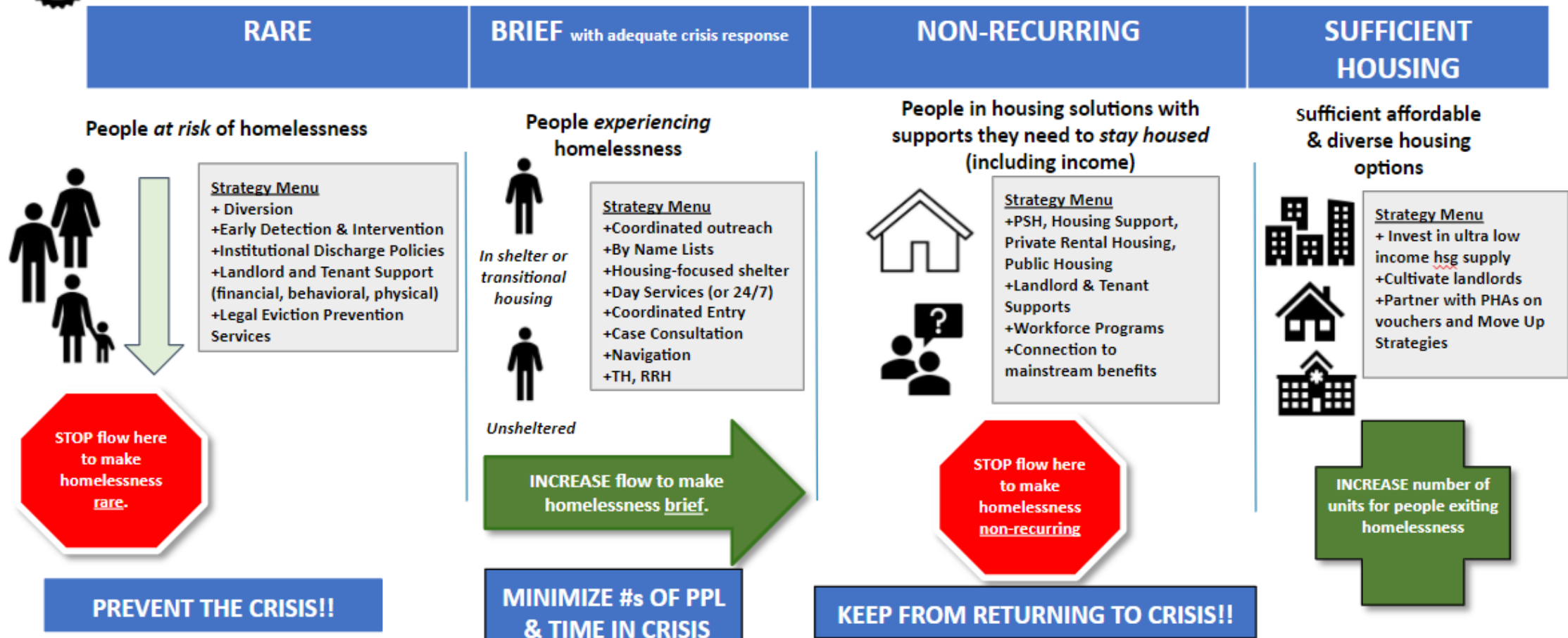
# Heading Home Ramsey



**Vision:** We work together to create a community where homelessness is **rare**, **brief** (with adequate crisis response), and **non-recurring**, where we **eliminate racial disparities**, and **everyone is housed**.



Assess program and policy impact on people of color and examine results by race.

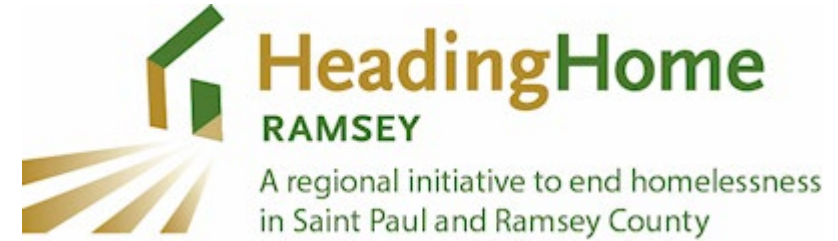


# Continuum of Care Structure and City Representation



- Governing Board (strategic leadership and decision-making)
  - Chair - Deputy Mayor Tincher
  - Vice Chair - Commissioner MatasCastillo
  - Member: Councilmember Noecker
- Steering Committee (operational leadership, implementation and guidance)
  - Chair – Alan Ostergaard, Radias Health
  - Vice Chair – Chris Michels, Catholic Charities
  - Member: Andrea Hinderaker
- Workgroups (advances the work of the CoC)
  - Variety of topics, many city staff engaged
- Ranking Committee (ranks and selects projects through CoC RFPs and selections)
  - Deputy Mayor Tincher and Andrea Hinderaker

# State Funding Update



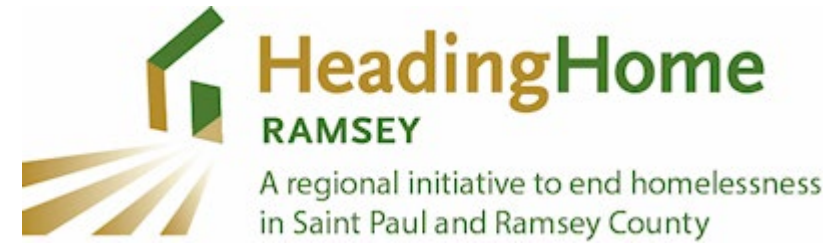
Total awarded: \$6 million

- Total allocated through RFP process: ~4.5 million
- Total unallocated: ~1.5 million

Next step for unallocated funds:

- Recommendations from Ranking Committee to Steering Committee identifying Gaps in RFP responses
- Steering Committee to sponsor ideas (8/18-8/28)
- Steering Committee to rank ideas (8/30)
- Governing Board to select ideas (9/7)

# Unallocated Funds



Submitted proposals must meet the needs of the CoC and serve county residents in terms of:

- Increasing shelter capacity
- Addressing unsheltered needs

Funding/procurement requirements for proposed ideas:

- State requirements:
  - Cannot be Capital expenses
  - Requires all funds be spent by June 30, 2023
- County requirements:
  - Must follow Ramsey County Procurement guidelines as the county executes the contracts with partners

# Timeline

- Accepting the funds requires County Board approval and a contract with the State
- Aiming to complete both on or before October 1st
- Established contracts would be from October 1, 2022, to June 30, 2023

# Homeless Assistance Response Team

Compassionate Encampment Response

Creative Solutions

Intentional – Relentless Engagement



SAINT PAUL  
MINNESOTA

STPAUL.GOV



# HART Weekly Update

## Homeless Assistance Response Team

August 16, 2022

**46**  
Total Active Sites

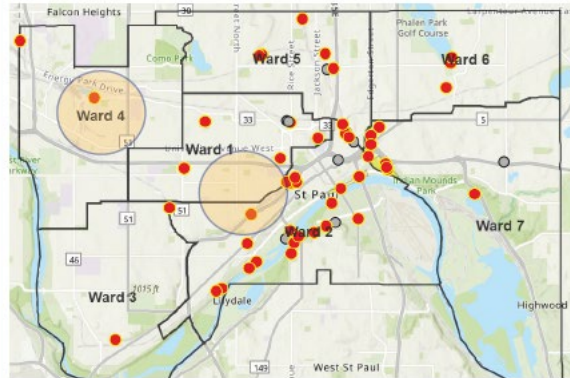
**107**  
Total Occupants

**97**  
Total Tents

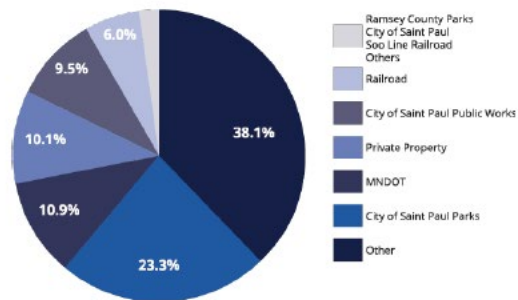
**73**  
Total Male

**34**  
Total Female

### City Data Summary



### Property Owner



SAINT PAUL  
SAFETY & INSPECTIONS

#### HART Contact Information

Andrea Hinderaker, HART Program Coordinator  
Brian Ganzel, DSI Inspector II, HART  
Sam Stoltz, Outreach Worker

andrea.hinderaker@ci.stpaul.mn.us  
brian.ganzel@ci.stpaul.mn.us  
sam.stoltz@ci.stpaul.mn.us

*Numbers of active sites, numbers of tents and occupants show minor fluctuations from week to week but in general we are seeing decreases in the number of sites over the last several weeks.*

### Cathedral Hill

Nine tents, six men, six women, and one kitten

HART along with other providers will be on site this week from 12:00 noon to 7:00 p.m. relentlessly engaging and being present to offer support and assistance when individuals indicate they are ready to move forward.

After this week HART will be engaged again at several smaller sites throughout the city. The team has identified a recent trend among unsheltered residents setting up for a night then moving the following day to a different location.

### Newell Park

Encampment area cleaned and closed on August 11.

11 tents, seven couples, six single males, one single female, and one cat

At least 65 hours of outreach time invested over the course of two weeks. Team worked throughout the week to problem solve, identify resources, and prepare residents to move, including offering storage and transportation. Family Shelter and County's Highway to Housing program provided support while other partners on site aided as well.

Three housing applications and six housing assessments were completed; plus two family shelter and several Highway to Housing referrals. All of the couples who accepted assistance were able to access housing through Highway to Housing referrals.

Two young pregnant women, both in partnerships, declined services and left the site with their partners.

A young man with medical concerns met with CARES staff, who was able to recommend interventions. The man declined offer of transportation and chose to leave the site on his own.

Some neighbors brought coffee and breakfast food and assisted on Thursday with packing supplies and an offer of transportation if anyone needed a ride.



*City staff on site cleaning after individuals left Newell Park last week*



SAINT PAUL  
SAFETY & INSPECTIONS

#### HART Contact Information

Andrea Hinderaker, HART Program Coordinator  
Brian Ganzel, DSI Inspector II, HART  
Sam Stoltz, Outreach Worker

andrea.hinderaker@ci.stpaul.mn.us  
brian.ganzel@ci.stpaul.mn.us  
sam.stoltz@ci.stpaul.mn.us



SAINT PAUL  
MINNESOTA

STPAUL.GOV



# Lower Landing – First Closing without Single Room Occupancy

What we learned:

1. A third of the folks who engaged had already been in the County Hotel Program and either lost their spots due to behaviors or timed out when the shelters closed.
2. Over one third were without housing assessments.
3. One quarter no benefits i.e. food support/GA (\$203)
4. Criminal History i.e. active warrants that would take travel and trust – barrier to benefits and housing.
5. Expired section 8 vouchers due to lost contact with housing supports.
6. Very few phones – for support systems and/or follow up.
7. Available transportation and storage are essential and compassionate.
8. Engagement requires showing up, consistency, patience and variety of personalities.



# When Success Looks Different

1. Learning someone's name even if they decline assistance, is success. **Trust.**
2. The encampment grows slightly during the intensive engagement – people are coming to the location they heard will offer them assistance. **Good Reputation.**
3. Acceptance of storage but not shelter option. **Trusting us with their belongings.**
4. Engaging with neighbors even when they are angry. **Empathy and Education.**
5. Building relationships with service providers, specialists in the field, shelter and housing providers behind the scenes. **Collaboration. Community. Creating Pathways Out of Homelessness.**



## 30% AMI and below Units Permitted 2019-2021

	Saint Paul
2019	0
2020	10
2021	10
2022 units funded (will be permitted in 2022 or early 2023)	110





# Next steps for deeply affordable development

## **2<sup>nd</sup> 30% AMI ARPA solicitation:**

- Approximately \$20M available
- Hope to fund at least another 100 deeply affordable units
- Plan to prioritize supportive housing (first round prioritized adding deeply affordable units to projects already in our pipeline)

## **Additional efforts:**

- Continue to build bridges between the unsheltered services world and the housing development world
- Plan for longer term sources of deeply affordable housing (I.e. Plan for when ARPA runs out)
- Develop more specific goals around deeply affordable housing needs: forecast future needs and plan accordingly, scenario planning for different circumstances, complete a place-based equity analysis



**Thank you.**