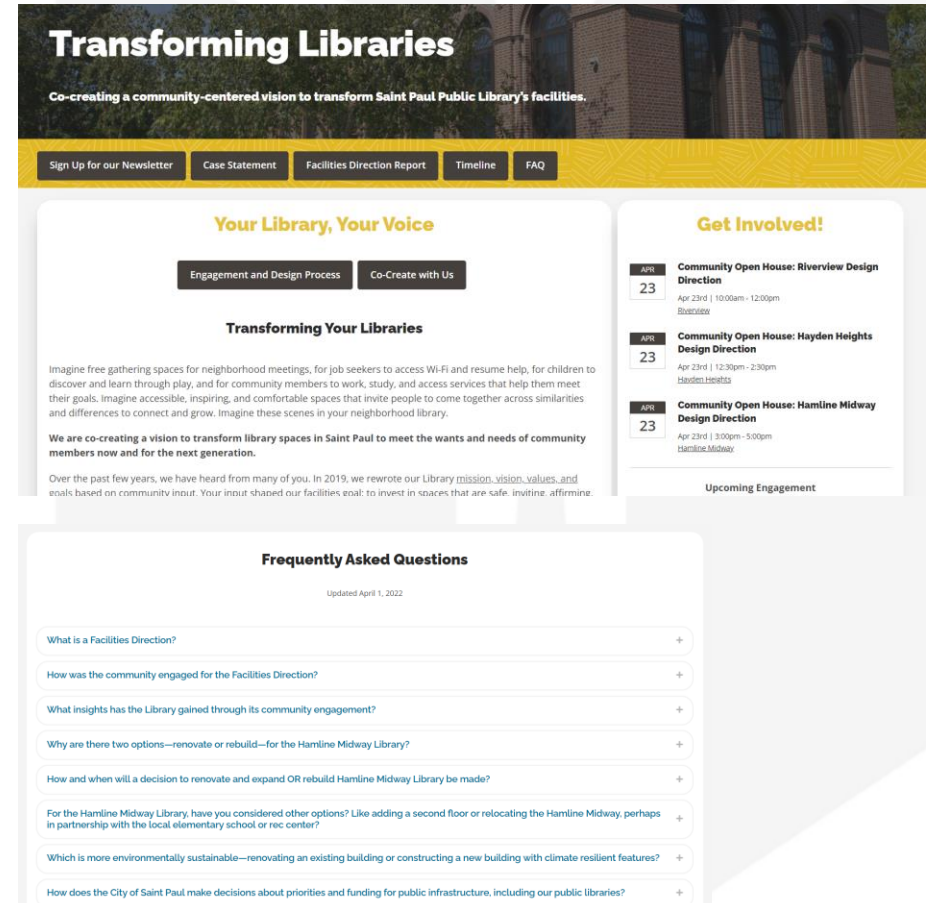


April 2022 Update



Resources Available

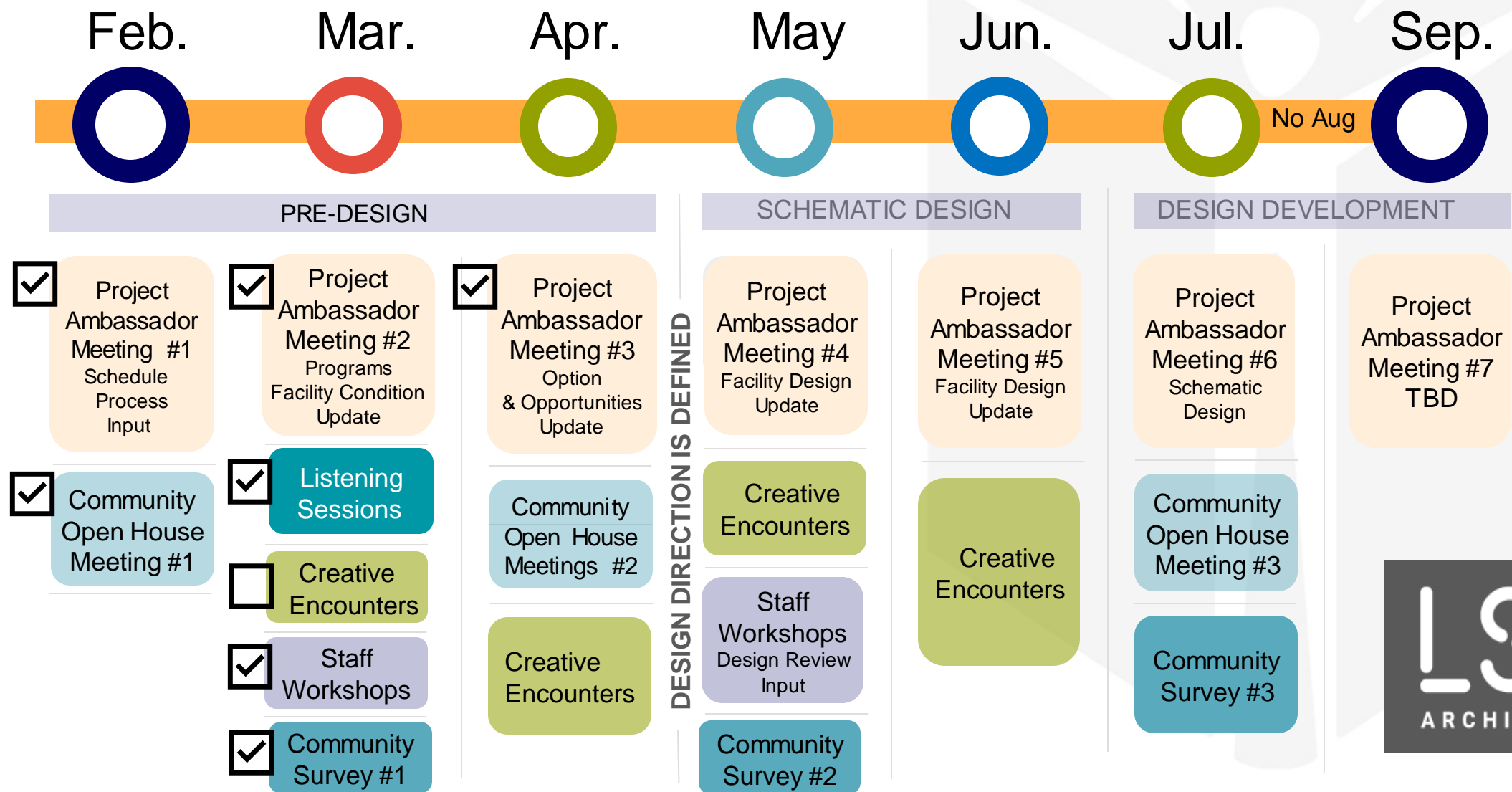
- Comprehensive information and background documents available on website
- E-newsletter with regular updates
- SPPL Social media



Website:

[Transforming Libraries | Saint Paul Public Library \(sppl.org\)](https://www.sppl.org/Transforming-Libraries)

Community Engagement Timeline



Project Ambassadors

Participants

- District Councils
- Local Business Chambers
- Hamline Midway Library Association
- Library Branch Managers
- Artist Cohort
- Council Legislative Aids
- Mayor's Office
- Sustainability Initiative / Chief Resilience Officer
- Architectural Design Team – LSE Architects

Role Description

- Give recommendations and insight
- Hear updates
- Connect SPPL with partners
- Share information with community networks
- Direct interested stakeholders to information resources and engagement opportunities
- Promote engagement opportunities

Arts Advisory Cohort + Creative Encounters

- Led by experienced public art curator and community organizer Tricia Heuring
- Embed artists throughout the design and engagement process
- Use their experience as Saint Paul artists and community members to inspire dialogue with the community about the future of libraries as cultural hubs.
- Use their skills in curiosity and creativity as artists to identify points of relevance—whether tensions, connections, or opportunities—and develop creative community engagements, or encounters, for further public conversation (perhaps through a pop-up or by attending a community event).
- Review and represent community interest in late stage design review and provide recommendations for arts engagement and/or incorporation of public artworks in future phases of the project



Tricia Heuring



Rebecca Crisanta de
Ybarra



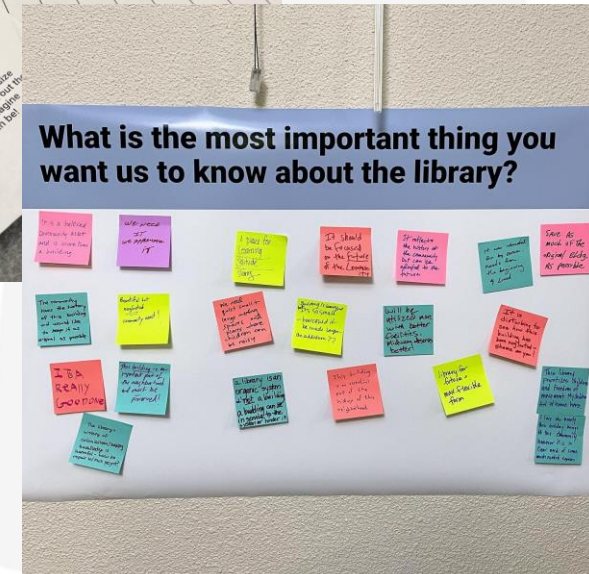
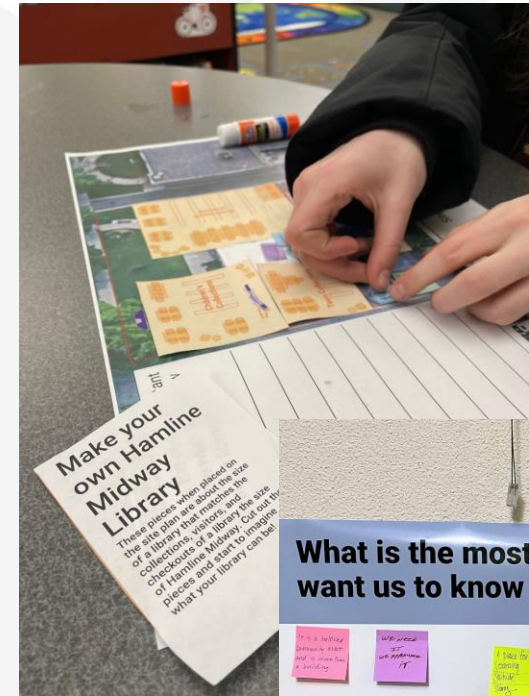
Bayou



Xee Reiter

Engagement Update

- 1 Virtual Open House
- 3 in-person Listening Sessions (1 per library)
- Library staff Listening Sessions (1 per library)
- 3 Project Ambassador Meetings
- Survey – As of 3.30.22
 - 867 Electronic surveys completed
 - 600 Hamline Midway
 - 114 Hayden Heights
 - 153 Riverview
 - 23% Identify Male, 66% Female, 3% Non-binary/trans
 - 74% Identify as White



Engagement Update



- Surveys
 - 125+ Paper surveys completed at pop up events.
- Pop Up Meetings
 - Equity-focused
- Locations: Midway Cub Foods, Urban Lights Music, East Side Boys & Girls Club, Hmong College Prep Academy, Beautiful Launderette, El Burrito Mercado, Hancock Rec Center
- Bookmobile stops

Engagement Update



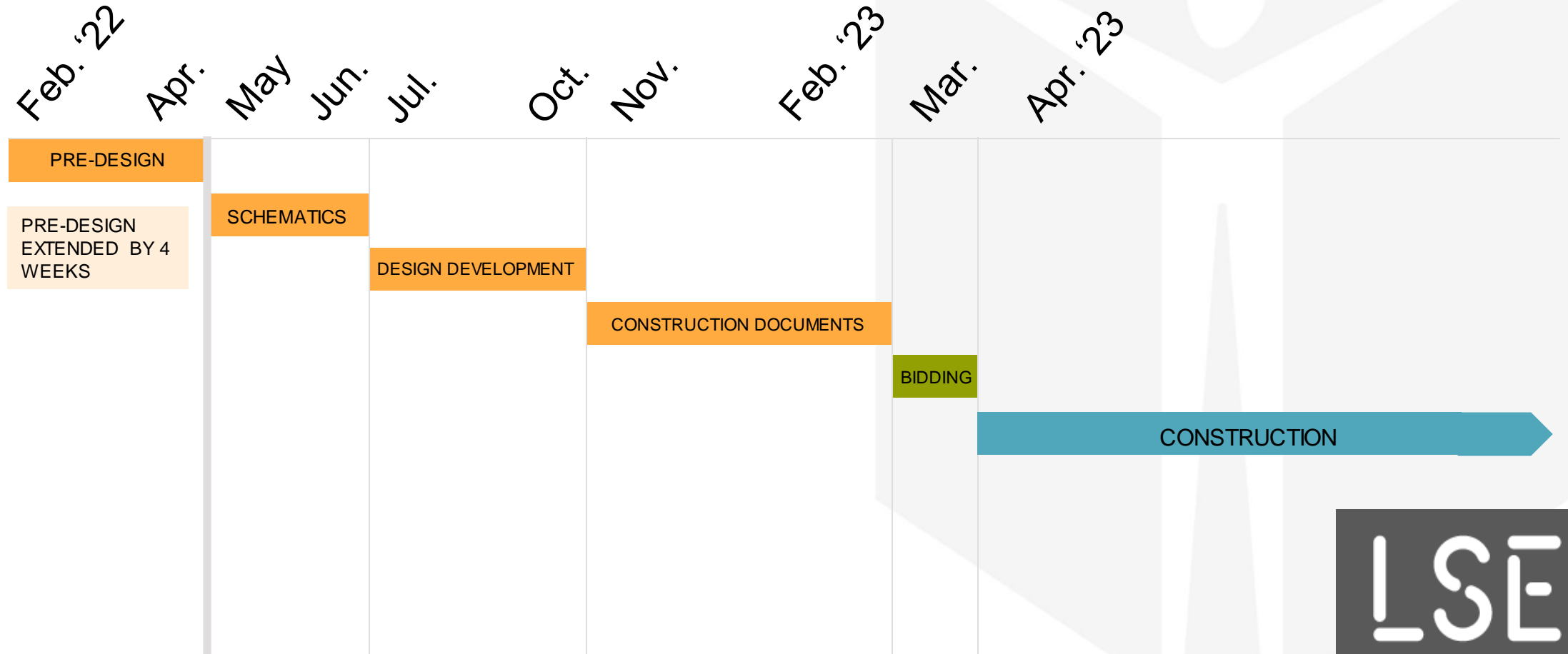
Engagement Update



Upcoming Open Houses

- Saturday 4/23
 - 10-12 at Riverview
 - 12:30 – 2:30 at Hayden Heights
 - 3 – 5 at Hamline
- Artists will be involved in designing an activity
- We will be clear about what we are listening for.

Project Timeline





Riverview Library

Gross Area

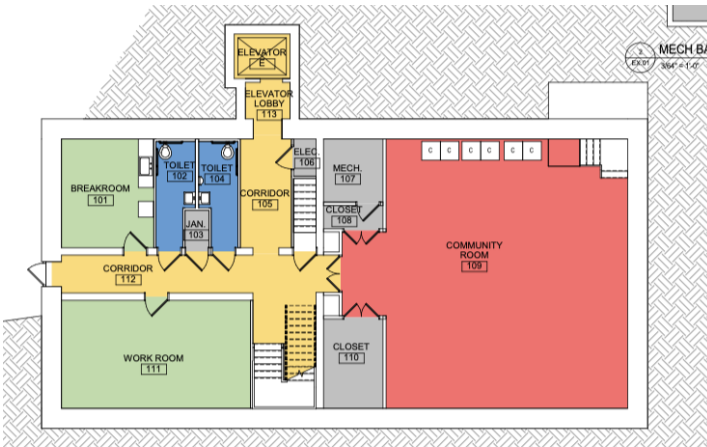
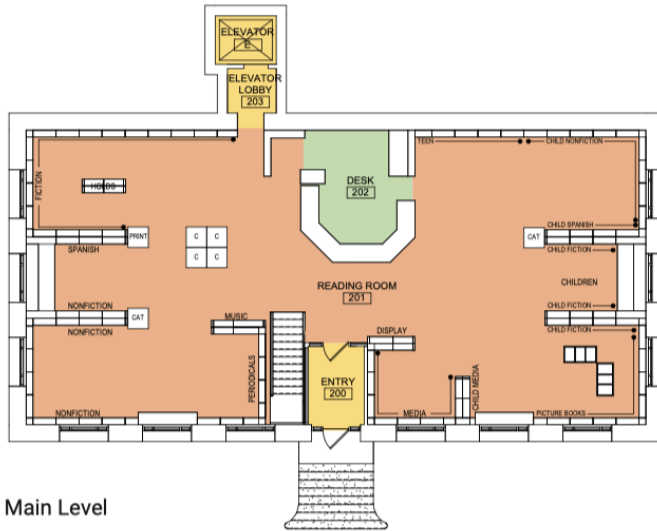
8,418 SF

Net Usable

6,380 SF or 75%

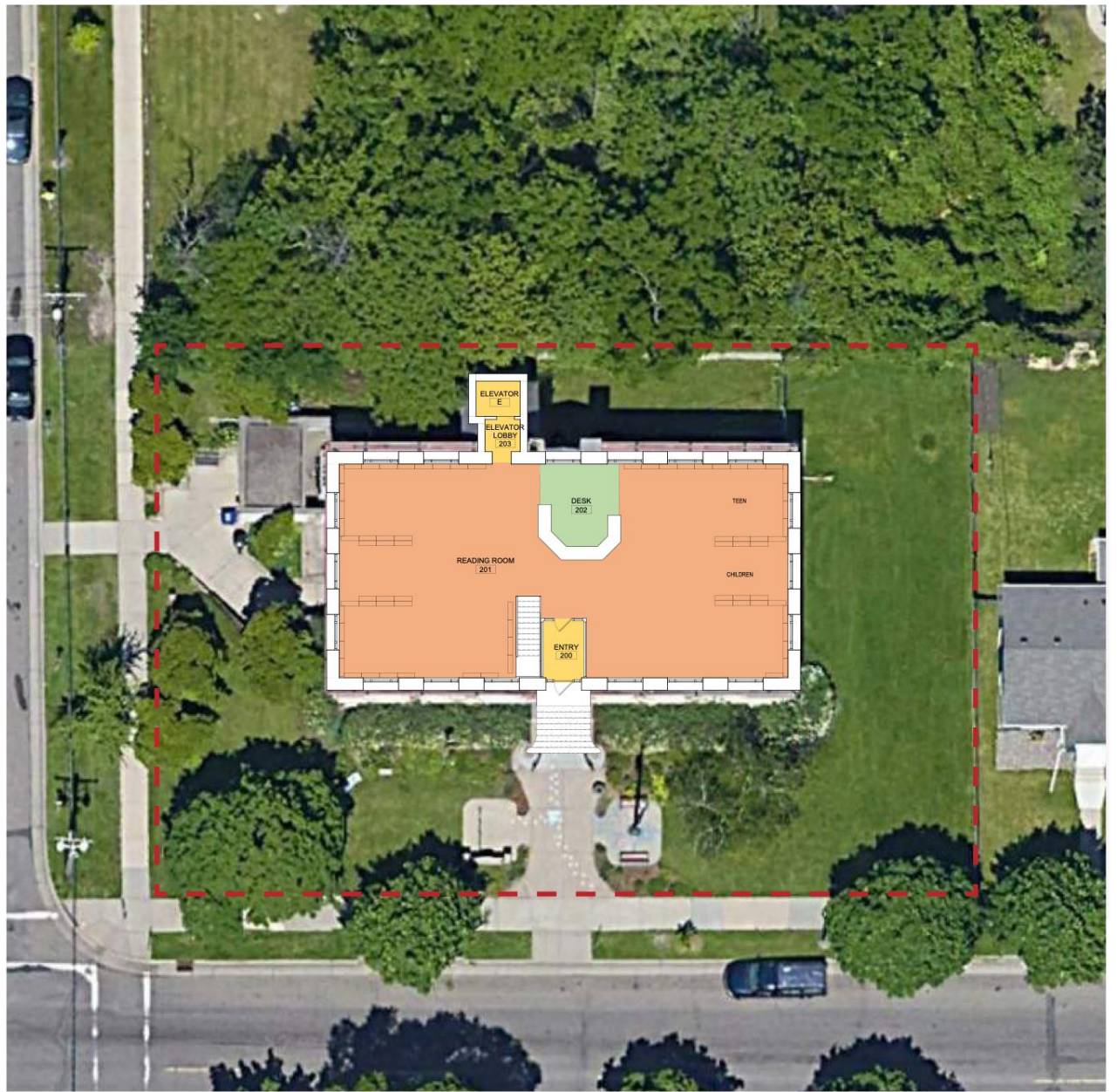
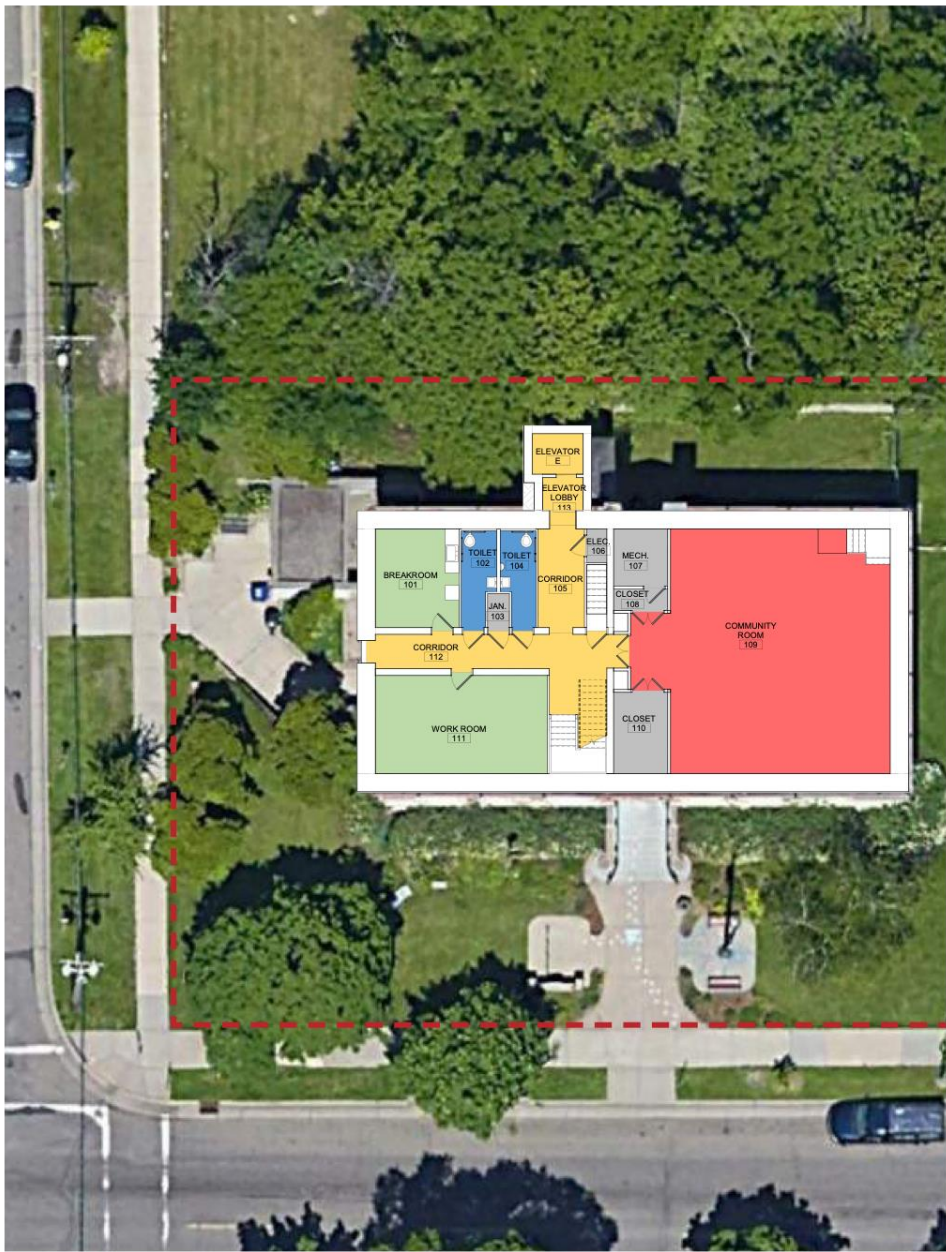
Visits

79,560



Assessment Big Picture

- Accessible entry is inequitable
- Approach to accessible entry does not meet accessibility
- Poor exterior sightlines to accessible entry are a security concern
- Replace Mechanical systems that have reached their useful life
- Remote lower-level restrooms present major security challenge
- Carnegie Library; Historical Preservation Status



- ↑ N
 Collections & Reading Room
 Community Room
 Circulation
 Staff
 Toilets
 Partnerships



Historic Detailing



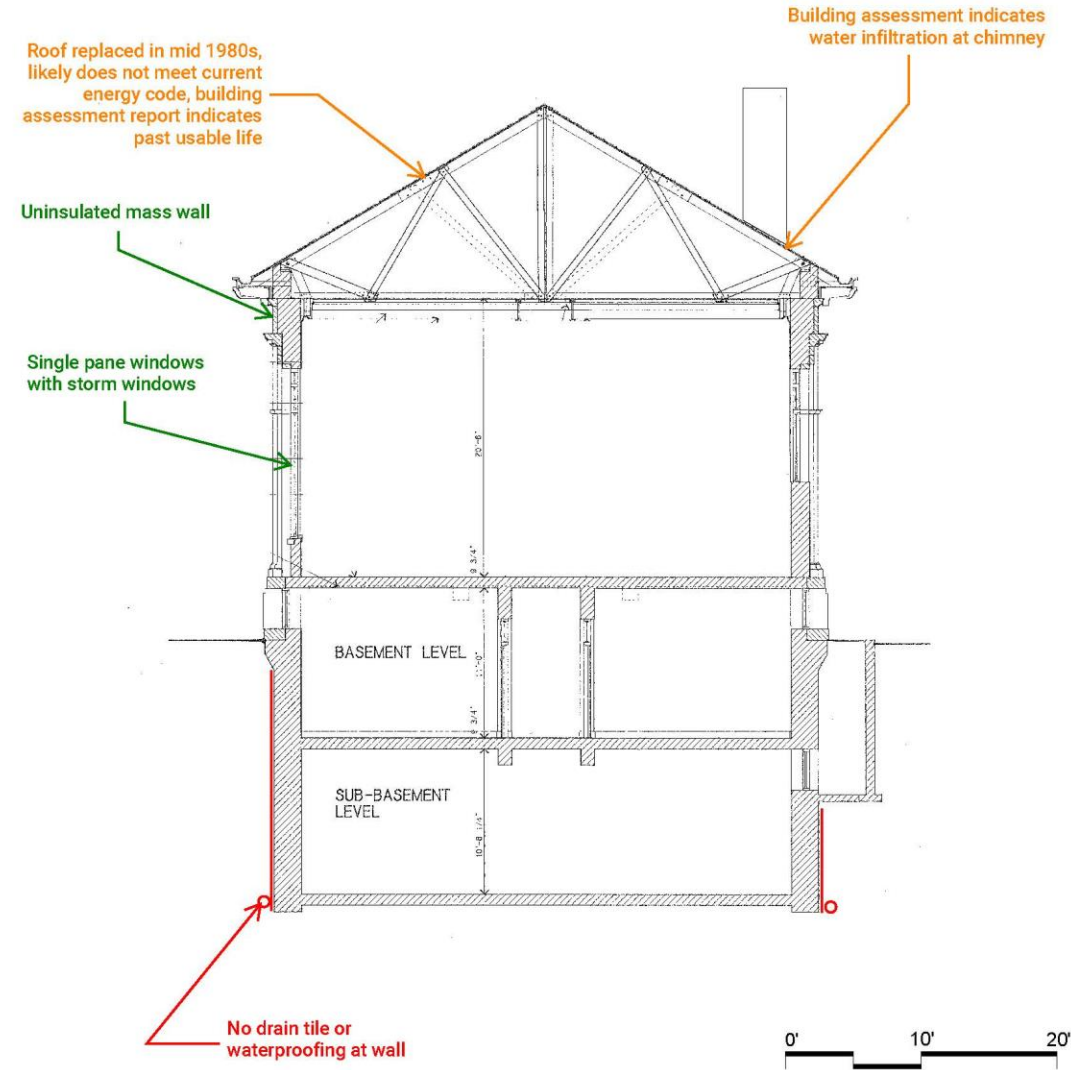
Open reading room



Toilet rooms

	Year	Assembly	Estimated R-Value	Current Code R Value
Roof	1985	2" rigid insulation plus sloped expanded insulation (Average ~3")	15	30
Exterior Wall	1935	12" Masonry (4" Face brick + 8" block), plaster lath, uninsulated	1.9	13 CI
Windows	1935	Single Pane Aluminum window with interior storm window	2	3
Foundation	1935	12" Cast in place Concrete	2.5	7.5 CI

CI: Continuous Insulation



Tight stair between levels



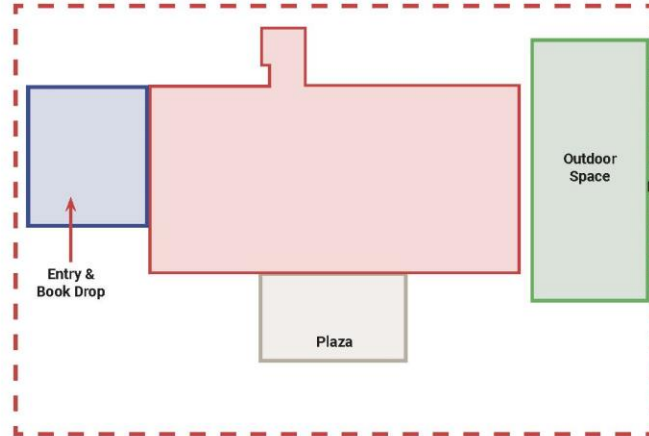
Outdated finishes



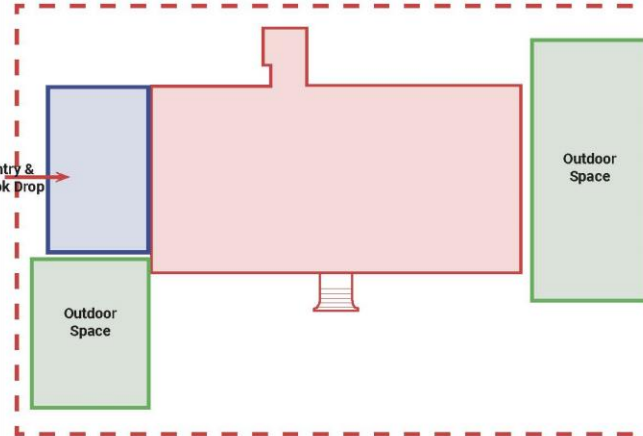
Plaster Cracking

Riverview Concepts

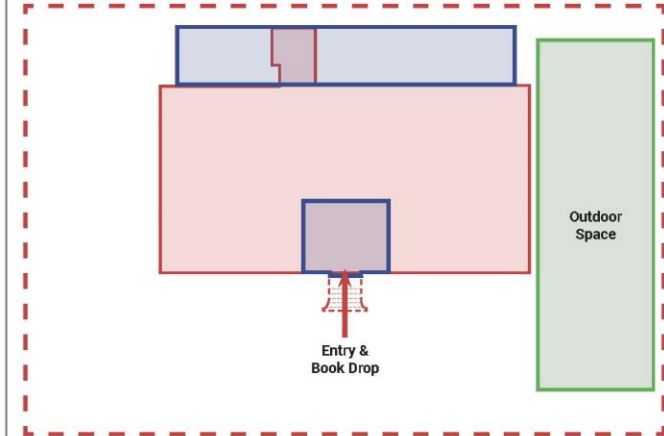
1. Move entry to new addition, create new plaza at existing entry



2. Move entry to new addition



3. Main entrance lowered to accommodate everyone in historic entry, addition to back of building



Local Precedent 1



Northfield Library, Northfield

Local Precedent 2



Sumner Library, Minneapolis
Completed in prior association by key team members

Local Precedent 3



Franklin Library, Minneapolis



Hayden Heights Library

Gross Area

11,356 SF

Usable Public

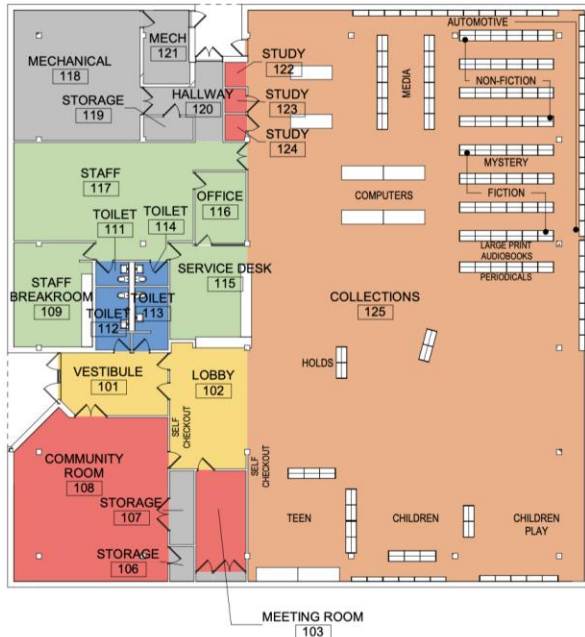
8,855 SF or 78%

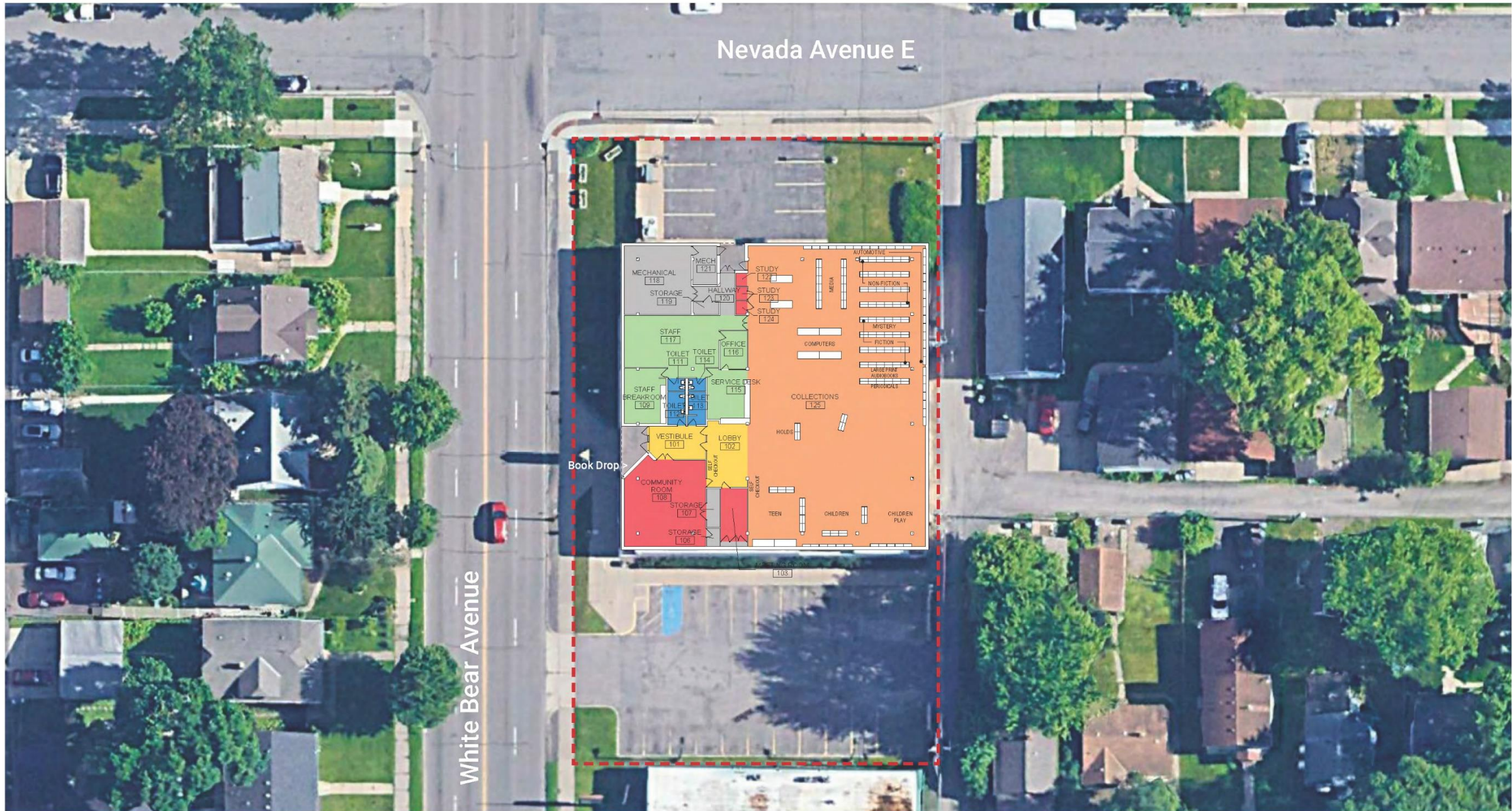
2019 Visits

67,608

Assessment Big Picture

- Study Rooms do not meet accessibility
- Finishes are worn and dated
- No visual control of restroom at entry
- Staff restrooms do not meet accessibility
- High windowsill heights limit views in or out
- Window in staff workroom leaks
- Doors need to be replaced
- Single-story, wide-open, flexible space





Nevada Avenue E

White Bear Avenue

Book Drop

- ↑
N

 - Collections & Reading Room
 - Community Room
 - Circulation
- Staff
 - Toilets
 - Partnerships



Iconic Signage



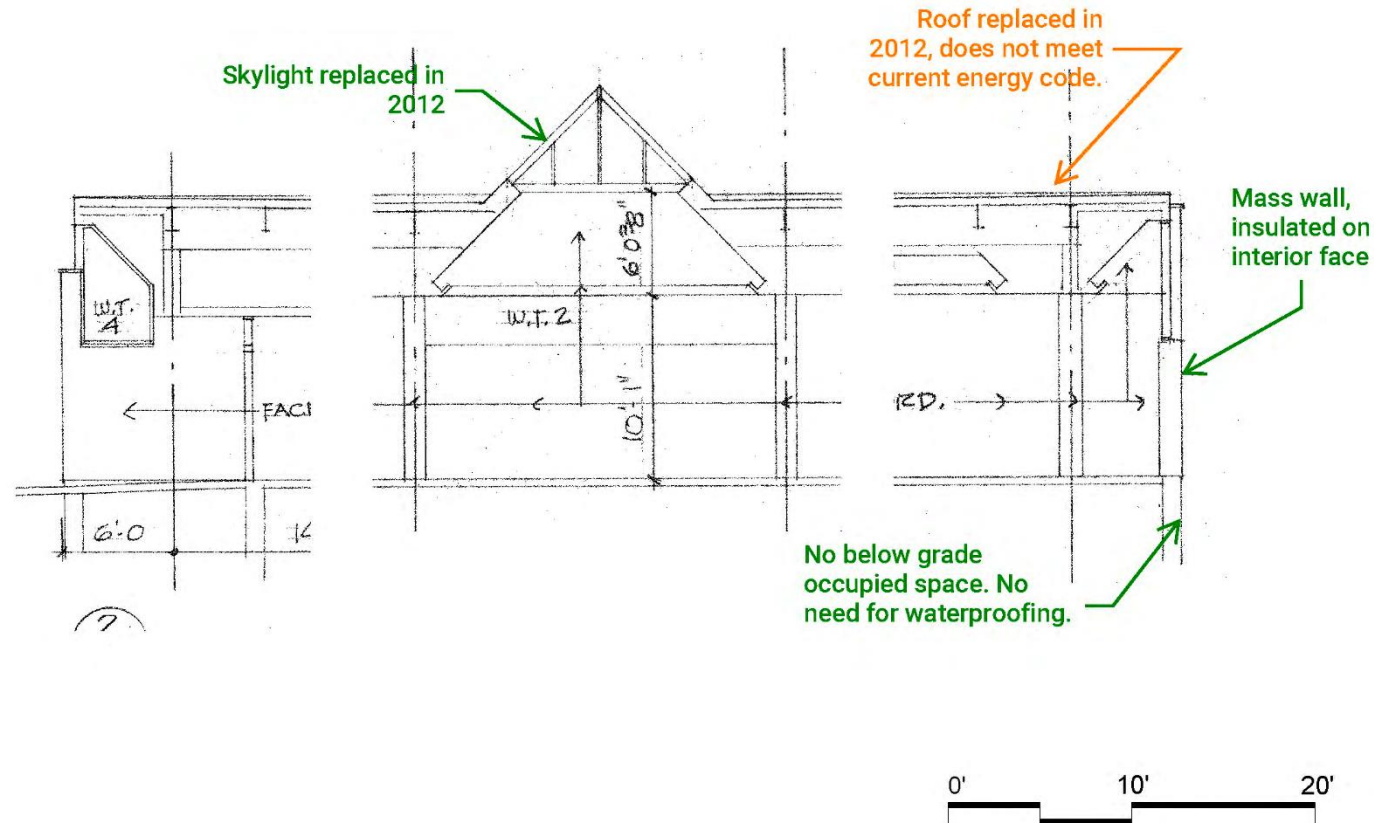
Long unobstructed spans



Not accessible toilet rooms

	Year	Assembly	Estimated R-Value	Current Code R Value
Roof	2012	2" rigid insulation plus sloped expanded insulation (Average ~3")	15	30
Exterior Wall	1977	12" Masonry (4" Face brick + 8" block), gypsum board over furred wall with 1 1/2" insulation	9 (0 CI)	13 CI
Windows	1977	Double pane windows or translucent panel in aluminum frame	-	3
Foundation	1977	12" Cast in place Concrete with 1.5 insulation	2.5	7.5 CI

CI: Continuous Insulation



Natural daylight



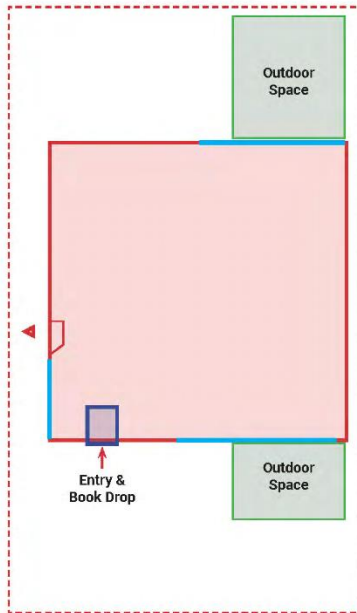
Unique Furnishings



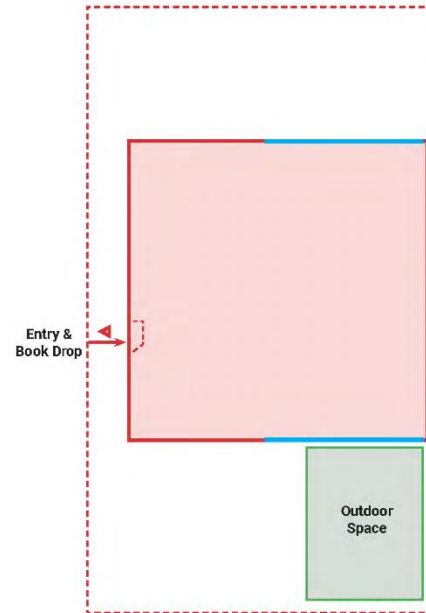
Playful Art

Hayden Heights Concepts

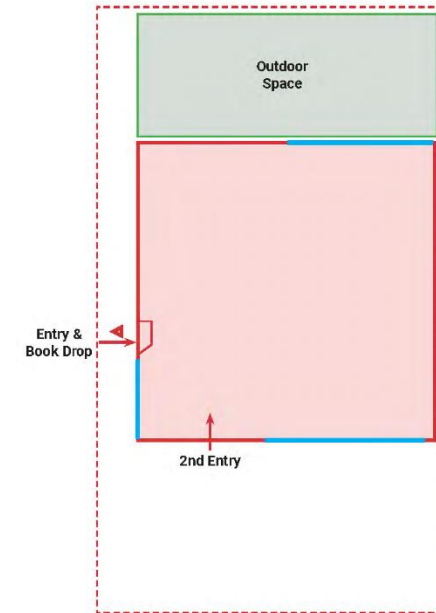
1. Split outdoor space adjacent to multiple program areas



2. Outdoor space with connection to parking lot



3. Outdoor space on North side of site only



Local Precedent 1
Book Drop Signage



Highland Park Library, Saint Paul
LSE Architects

Local Precedent 2
Front Porch



Webber Park Library, Minneapolis
LSE Architects

Local Precedent 3
Plaza



Oxboro Library, Bloomington
LSE Architects

Local Precedent 4
Reading Garden



Sun Ray Library, Saint Paul
LSE Architects



Hamline Midway Library

Gross Area

7,911 SF

Usable Public

5,045 SF or 64%

2019 Visits

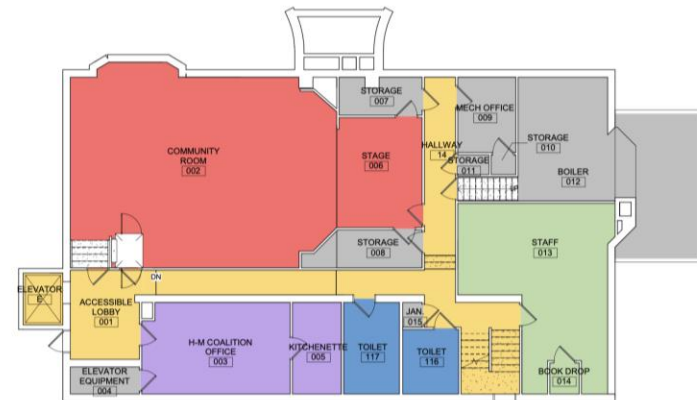
87,777

Assessment Big Picture

- Two story library
- Accessible entry off the alley is inequitable
- Building is lacking mechanical ventilation
- Floor to floor height of 9'-6" is limiting
- Lower-level hallway width and height do not meet accessibility requirements
- Structural system shows signs of deterioration in visible areas
- Subterranean water infiltration is the likely cause of foundation degradation and wet walls and floors
- Remote lower-level restrooms present major security challenges
- Select Architectural features could be retained or re-used



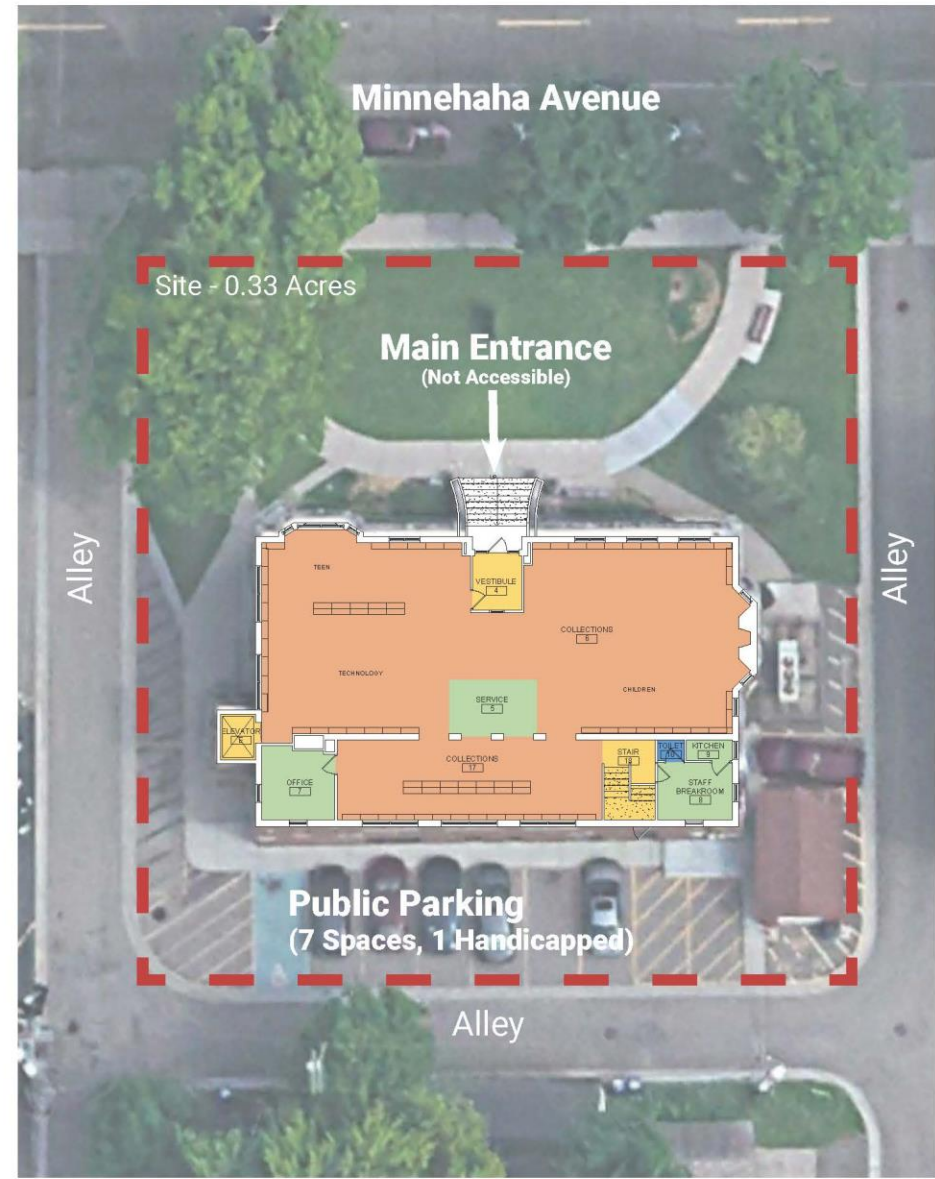
Main Level



Lower Level

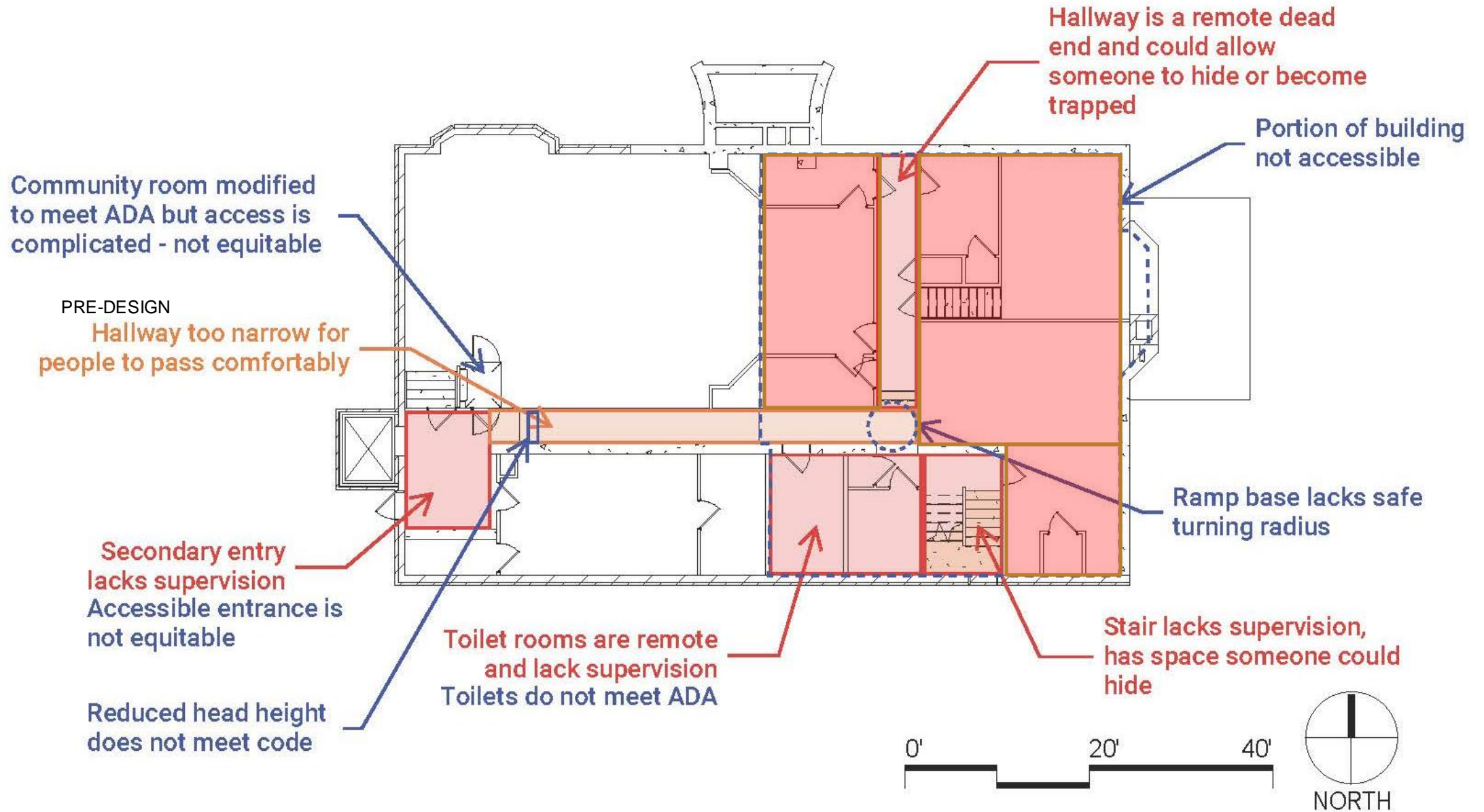


Lower Level



Main Level

- | | |
|---|---|
| Collections & Reading Room | Staff |
| Community Room | Toilets |
| Circulation | Partnerships |





Storytime Fireplace



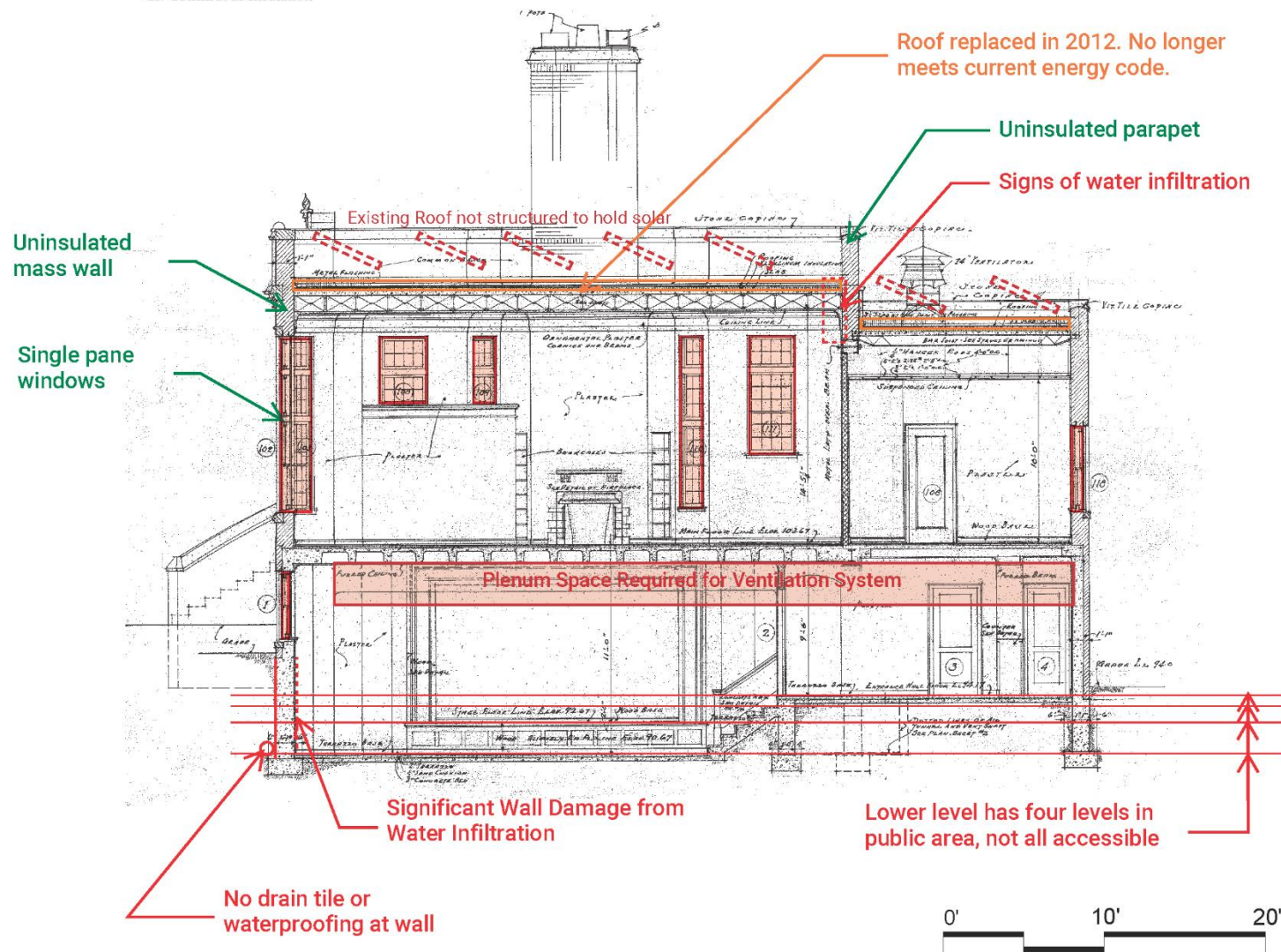
Water Damage in community room



Structural damage in mechanical room

	Year	Assembly	Estimated R-Value	Code R Value
Roof	2012	2" rigid insulation plus sloped expanded insulation (Average ~3")	15	30
Exterior Wall	1935	12" Masonry (4" Face brick + 8" block), plaster lath, uninsulated	1.9	13 CI
Windows	1935	Single Pane Aluminum window with interior storm window	2	3
Foundation	1935	12" Cast in place Concrete	2.5	7.5 CI

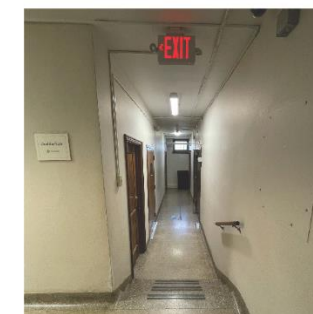
CI: Continuous Insulation



Entrance Stonework



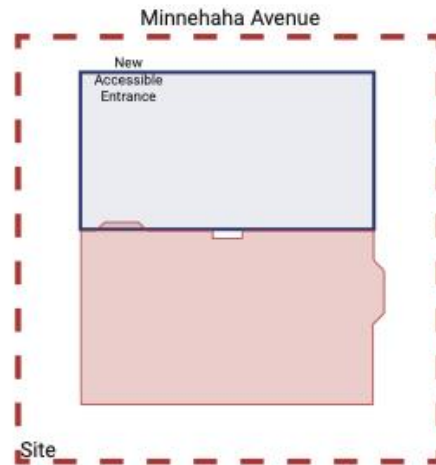
Low Overhead Height



Unsafe Hallway Condition

Hamline Concepts

1. Addition to building in front of existing building



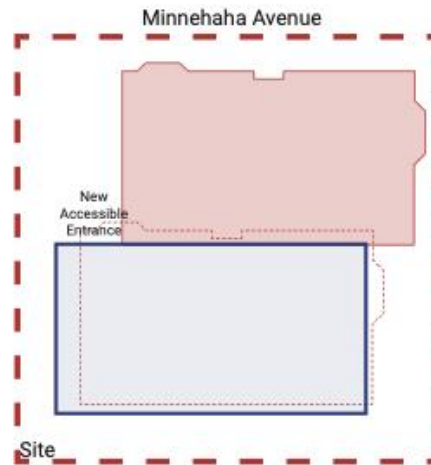
Local Precedent 1



Giddens Learning Center
Hamline University, Saint Paul



2. Move building to new location on site and addition

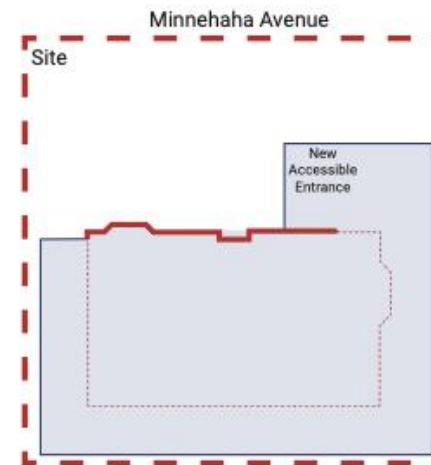


Local Precedent 2



Moving of the Schubert Theater
Minneapolis

3. Preserve facade new building

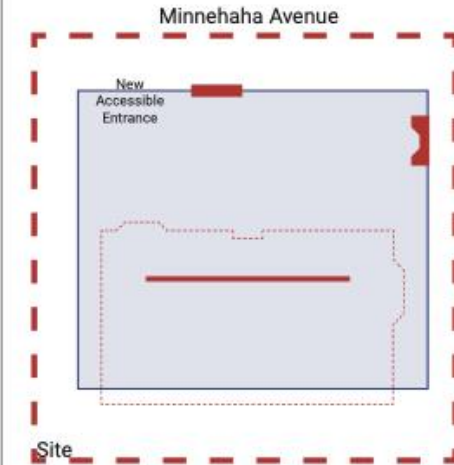


Local Precedent 3



Pioneer Hall
University of Minnesota, Minneapolis

4. Reuse architectural features and materials in new construction



Local Precedent 4



Above: McNamara Alumni Center
University of Minnesota, Minneapolis
Antoine Predock with key LSE Team Members

Recap Program & Site Decisions

Riverview

- Accessible entry
- Bathrooms
- Outdoor space

Hayden Heights

- Partner space
- Outdoor space

Hamline Midway

- Expansion options



Criteria for Design Direction



- Deliver on Library and City Commitments
- Respond to Engagement Input
 - Surveys
 - Open Houses
 - Listening Sessions
 - Pop Ups
 - Creative Encounters
- Meet Budget
 - Construction
 - Operational

Library Commitments



- Safe, inviting, affirming, and comfortable libraries for people of all cultures, abilities, and communities
- Improved accessibility
- Additional spaces and study rooms for communities to gather, work, study, and collaborate
- Separation of quiet & loud spaces
- Enhanced play & learn space
- Technology-rich environments

City Commitments

- Sustainability benchmarks
- Historic preservation (Riverview)
- Equity and inclusion
- Fiscal responsibility



Closing Comments and Discussion

Thank you!

