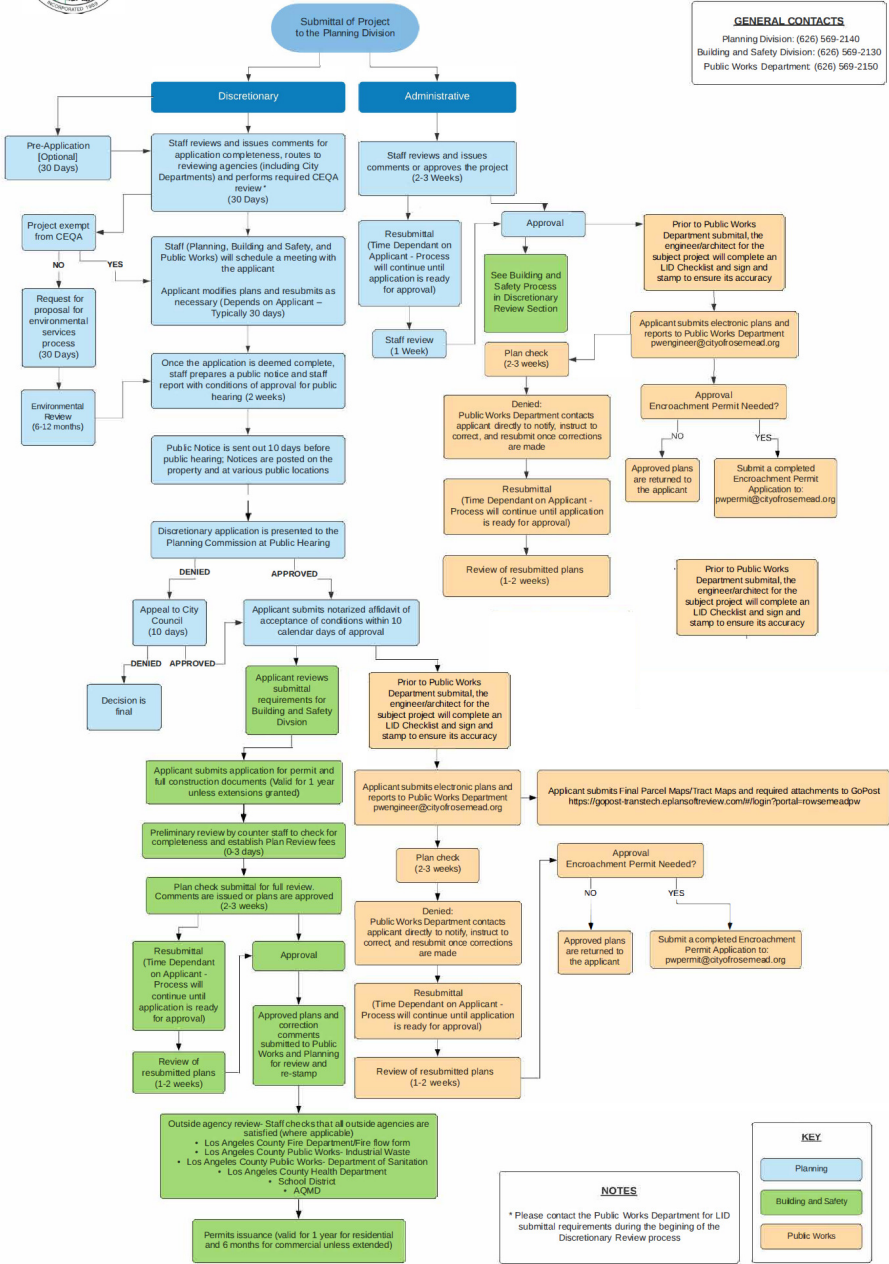




**Community Development Department & Public Works
Development Process Flow Chart**

GENERAL CONTACTS
 Planning Division: (626) 569-2140
 Building and Safety Division: (626) 569-2130
 Public Works Department: (626) 569-2150



NOTES
 * Please contact the Public Works Department for LID submittal requirements during the beginning of the Discretionary Review process

KEY

Planning
Building and Safety
Public Works