

Conceptual Design Recommendations

Conceptual Design is the development of the direction that will be further studied and analyzed in the next phase. Imagery will evolve and change.

Goal to deliver:

- Safe, inviting affirming, and comfortable libraries for people of all cultures, abilities, and communities
- Improved accessibility
- Additional spaces for communities to gather, work, study, and collaborate
- Separation of quiet and loud spaces
- Enhanced play and learn space
- Technology-rich environments

Conceptual Design Recommendations

Informed by:

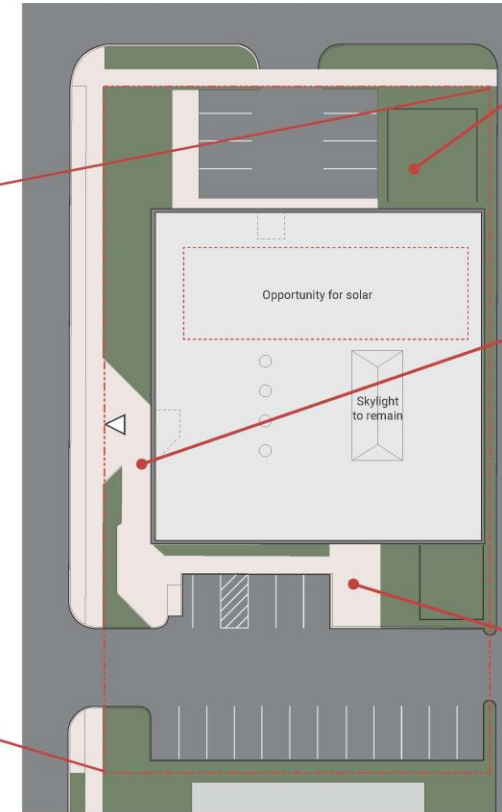
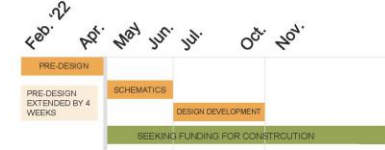
- Four years of SPPL previous study
- Community Engagement
- Staff Input
- Crime Prevention through Environmental Design Guidelines
- Saint Paul Sustainability Requirements/SB 2030
- HPC Requirements and Guidelines
- American Disabilities Act (ADA)
- Understanding of Library Operations
- Established Budgets

Project Cost \$4.1M

Key Features

- Outdoor Green Space
- Increased Presence on WBA
- Flexible/Central Meeting Space
- Partner Space

Saint Paul Public Library Hayden Heights



Conceptual Site Plan A

Q: What is a "Conceptual Site Plan?"

A: Conceptual is the first phase of the project. The overall idea for the site is established, however there is still a significant opportunity for input in design.



90% of all survey respondents support the idea of adding **outdoor program** space. Programs such as a storytime, maker activities, reading and meeting space are expanded with the addition of enclosed outdoor space.



Site safety and maintenance upgrades include new site lighting, bike parking, cameras, and concrete and paving repairs.



New windows to improve the visibility and safety of the site, improve the daylighting and feel of the interior, and to create a connection from the parking lot to the automotive collection, a special collection to Saint Paul Public Library which is currently housed at Hayden Heights Library. Survey responses indicate patrons value having the automotive collection at Hayden Heights.

Project Cost \$4.1M

Key Features

- Outdoor Green Space
- Increased Presence on WBA
- Flexible/Central Meeting Space
- Partner Space

Hayden Heights



Technology-rich community room is shown centrally located for greater flexibility to support storytime, teen usage, and large group gatherings.



Based on survey responses and community need for **Libraries as Resilience Centers**, a flexible partner space has been incorporated into the plan. Potentially a clinic, social worker, and workforce development.



Equity and safety are improved with new single user gender-inclusive and accessible restrooms, relocated to improve sightlines for library staff.



New and **expanded windows** adds interest and improve security to White Bear Avenue, while creating opportunities to connect unique library features like the auto collection to the site.

Conceptual Floor Plan A

The estimated cost is within the Library Transformations project budget.

Q: What is a "conceptual floor plan?"

A: Conceptual is the first phase of the project. The overall idea for the building layout is established however there is still a significant opportunity for input in design.



Project Cost \$5.5M

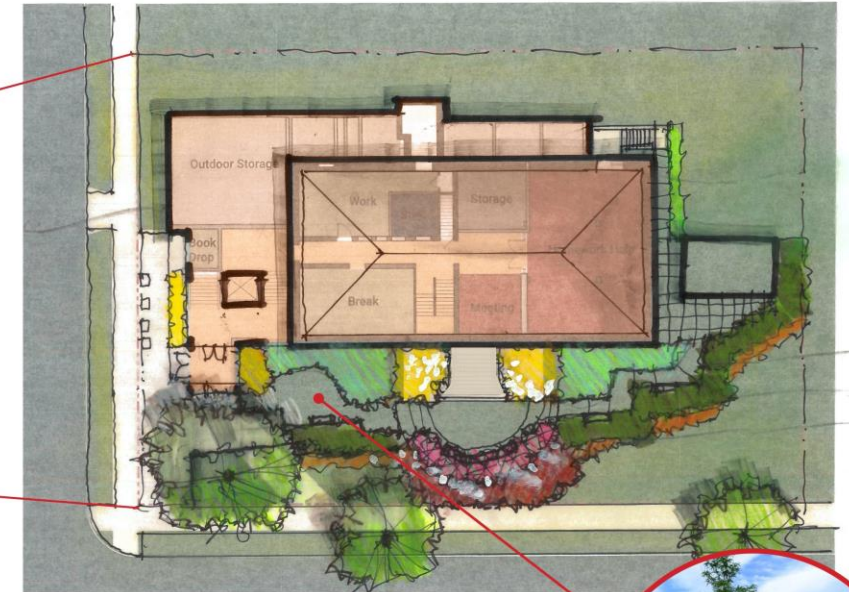
Key Features

- Entry Addition for Improved Accessibility
- Main Level Restroom and Meeting Rooms for improved Security and Usability
- Main Level Study Rooms
- Outdoor Green Space

Saint Paul Public Library Riverview



Safety and maintenance upgrades include new site lighting, bike parking, cameras, and concrete and paving repairs.



Conceptual Site Plan B

Q: What is a "conceptual site plan?"

A: Conceptual is the first phase of the project. The overall idea for the site is established however there is still a significant opportunity for input in design.



Exterior programming opportunities provide safe space for children and community access to outdoor space for storytime and events.

Project Cost \$5.5M

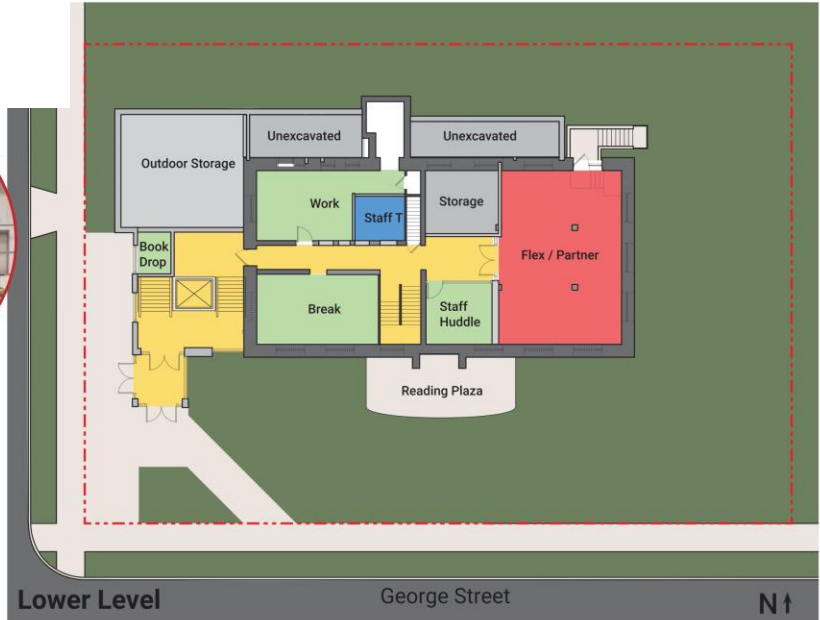
Key Features

- Entry Addition for Improved Accessibility
- Main Level Restroom and Meeting Rooms for improved Security and Usability
- Main Level Study Rooms
- Outdoor Green Space

Riverview



New entry provides accessible access to building, everyone can enter through the front door.



Conceptual Floor Plan B

The estimated cost is within the Library Transformations project budget.

Q: What does it mean this is a "Conceptual" floor plan?

A: Conceptual is the first phase of the project. The overall idea for the building layout is established however there is still a significant opportunity for input in design.



Equity and safety are improved with new single user gender-neutral and accessible restrooms, relocated to improve sightlines for library staff.



Technology-rich community Room is shown on main level providing opportunities for increased programming and supervisable quiet study.

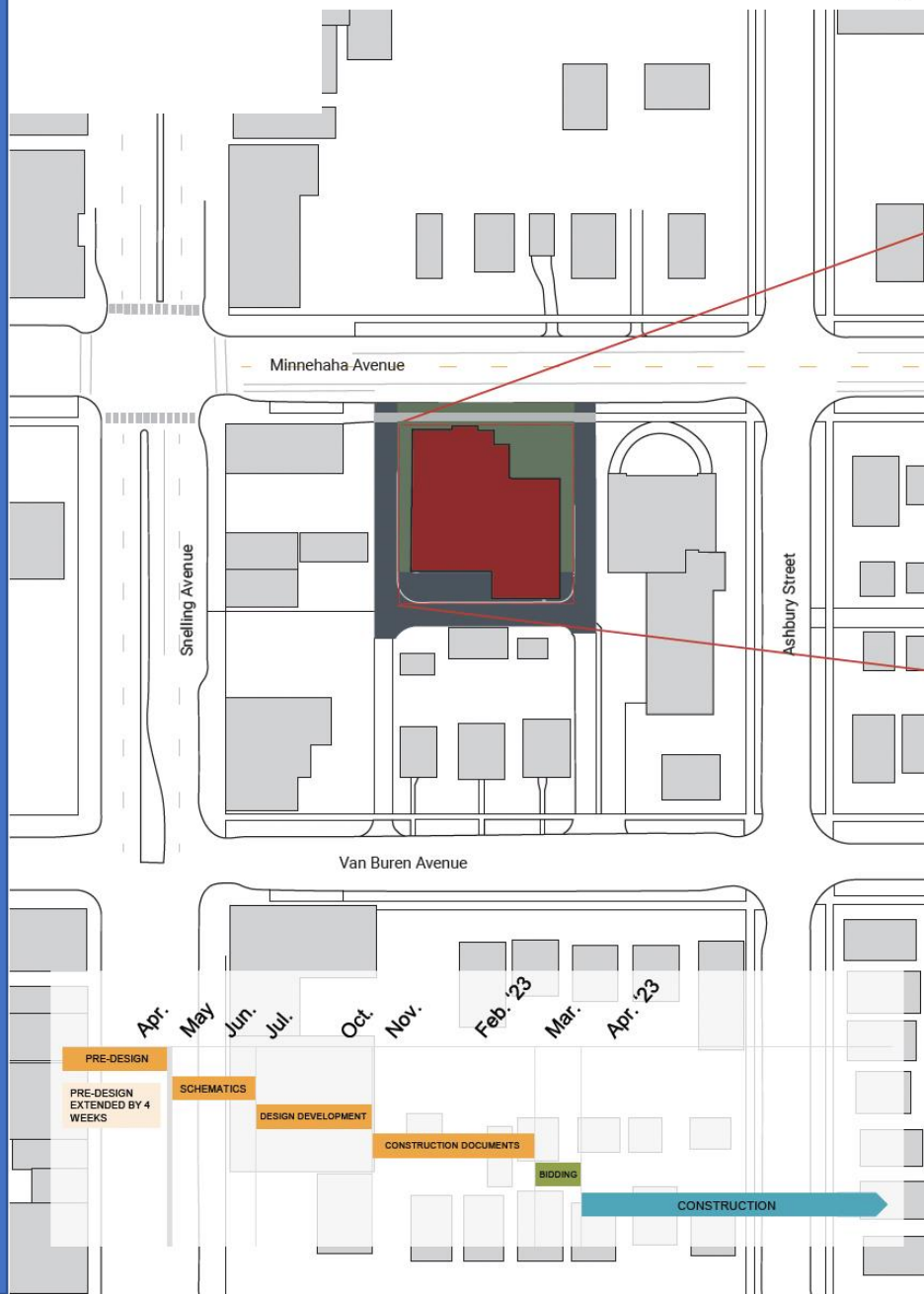


Project Cost \$8.1M

Key Features

- New 9,400 sf Single Level Library
- Bridges the New Library with the History with re-use of brick and stone arched entryway
- 30% -50% More Public Space
- 30% More Staff Space
- Improved safety with clear sightlines on a single level
- Outdoor Green Space

Saint Paul Public Library Hamline Midway



Conceptual Site Plan B

Q: What is a "conceptual site plan?"

A: Conceptual is the first phase of the project. The overall idea for the site is established however there is still a significant opportunity for input in design.



Safety and maintenance upgrades include new site lighting, bike parking, cameras, and concrete and paving repairs.



Exterior programming opportunities provide safe space for children and community access to outdoor space for storytime and events.

Project Cost \$8.1M

Key Features

- New 9,400 sf Single Level Library
- Bridges the New Library with the History with re-use of brick and stone arched entryway
- 30% -50% More Public Space
- 30% More Staff Space
- Improved safety with clear sightlines on a single level
- Outdoor Green Space

LSE
ARCHITECTS

Hamline Midway

Option B



New entry provides opportunities for reuse of building materials, in a new way that provides equitable access through the front door.



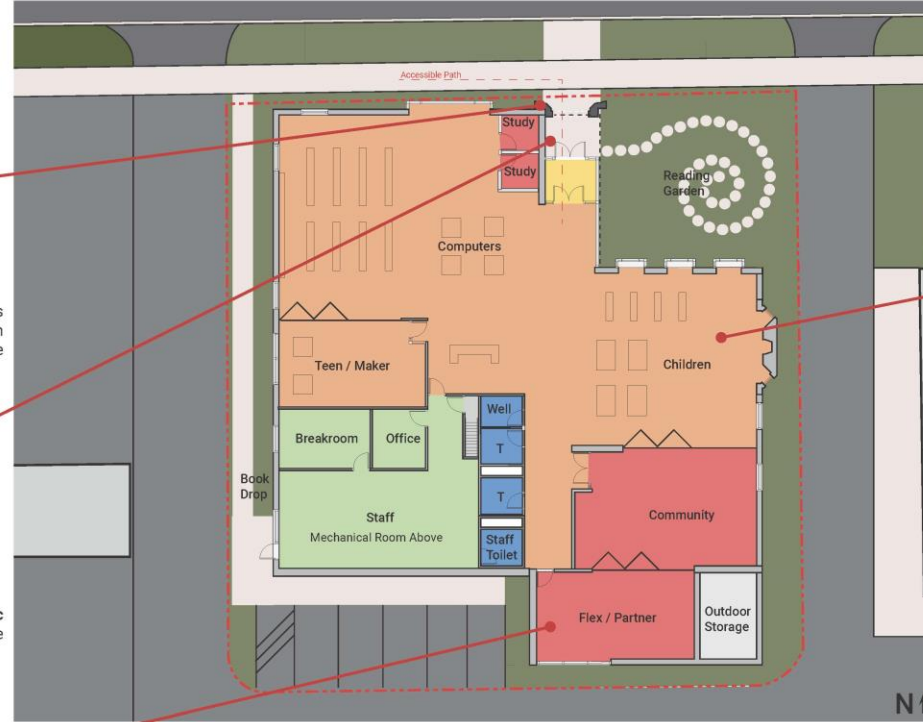
Opportunities for iconic public art installations that reflect the Hamline Midway community.



Based on survey responses and community desire for flexible space to support creative programming and community meets, plan includes flexible meeting rooms that allow small, medium, and large-sized configurations.



Equity and safety are improved with new single user gender-neutral and accessible restrooms, relocated to improve sightlines for library staff.



Conceptual Floor Plan B

The estimated cost is within the Library Transformations project budget.

Q: What is a "conceptual floor plan?"

A: Conceptual is the first phase of the project. The overall idea for the building layout is established however there is still a significant opportunity for input in design.



Expanded children's area provides opportunities for dynamic family play and a fireplace and adjacent community room for storytime.



High-performance enclosure and systems will provide best-in-class energy performance, opportunities for rooftop solar, and daylight harvesting.



Next Steps

Schematic Design June –July
Design Development July - September

Artist Conceptual Dream Board Inspiration and Concept

Watch for Artist Cohort
Library Dream Board
Installations to keep the
discussion and engagement
going !

