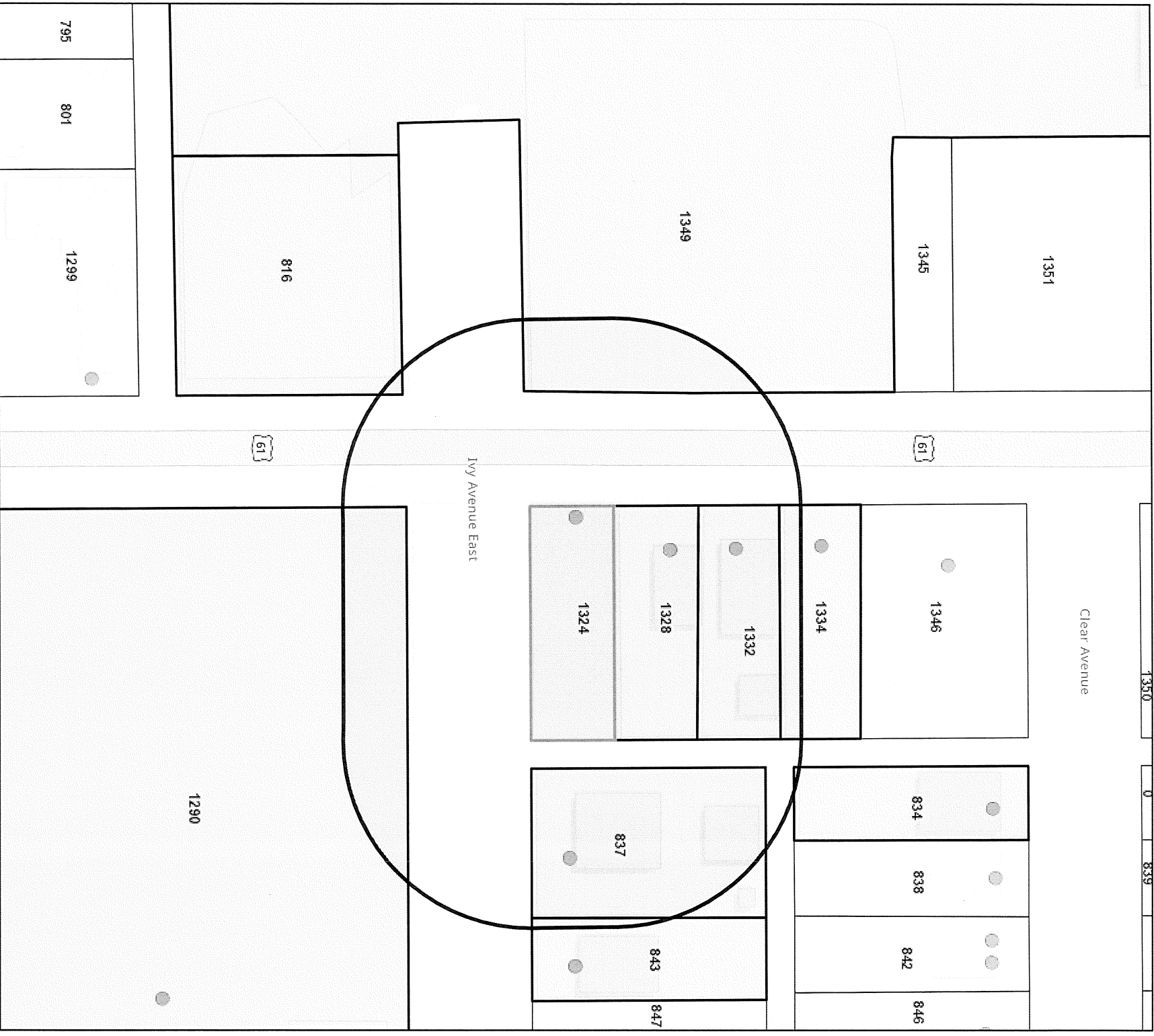


	A	B	C	D
1	MICHAEL J STROUSE	1332 ARCADE ST	ST PAUL MN 55106-1802	212922320167
2	1346 ARCADE STREET LLC	1346 ARCADE ST	SAINT PAUL MN 55103-1205	212922320166
3	ERIN RUIZ	834 CLEAR AVE	SAINT PAUL MN 55106-1818	212922320164
4	MELISSA R REYENGA	1328 ARCADE ST	SAINT PAUL MN 55106-1802	212922320168
5	PRESTIGE INVESTMENTS LLC	461 MARYLAND AVE W 203	SAINT PAUL MN 55117-4756	212922320169
6	JOHANNA B RUIZ	837 IVY AVE E	SAINT PAUL MN 55106-2043	212922320170
7	MARK CEMENSKY	1200 CENTRE POINTE CURV STE 250	MENDOTA HEIGHTS MN 55120-1353	212922320171
8	INDEPENDENT SCHOOL DIST 625	360 COLBORNE ST	ST PAUL MN 55102-3299	202922410125
9	ISD NO 625	360 COLBORNE ST	ST PAUL MN 55102-3299	202922440169
10	INDEPENDENT SCHOOL DIST 625	360 COLBORNE ST	ST PAUL MN 55102-3299	212922330055



Saint Paul Minnesota

The most livable city in America

The Geographic Information System (GIS) Data to which this notice is attached are made available pursuant to the Minnesota Government Data Practices Act (Minnesota Statutes Chapter 13). The GIS Data are provided to you "AS IS" and without any warranty, as to their performance, merchantability, or fitness for any particular purpose. The GIS Data were developed by the City of Saint Paul for its own internal business purposes. The City of Saint Paul does not represent or warrant that the GIS Data or the data documentation are error-free, complete, current, or accurate. You are responsible for any consequences resulting from your use of the GIS Data or your reliance on the GIS Data. You should consult the data documentation for this particular GIS Data to determine the limitations of the GIS Data and the precision with which the GIS Data may depict distance, direction, location, or other geographic features. If you transmit or provide the GIS Data (or any portion of it) to another user, the GIS Data must include a copy of this disclaimer.

Department of Safety and Inspections (DSI), Sources: Esri, Airbus DS, USGS, NGA, NASA, CGIAR, N Robinson, NCEAS, NLS, OS, NMA, Geodatasystem, Rijkswaterstaat, GSA, Geoland, FEMA, Intermap and the