

Exhibit A

Ordinance Permit 20210010305

Exhibit H

Form of Public Infrastructure Conveyance

PUBLIC INFRASTRUCTURE CONVEYANCE

ORDINANCE PERMIT # #20210010305

This Public Infrastructure Conveyance Agreement (“Agreement”) is made and entered into effective February 28, 2022, by and between PROJECT PAUL, LLC, a Delaware limited liability company (“Developer”), and CITY OF SAINT PAUL, MINNESOTA, a municipal corporation existing under the laws of the State of Minnesota (“City”).

NOW, THEREFORE, in consideration of the mutual obligations of the parties hereto, each of them does hereby covenant and agree as follows:

1. **Notification.** The Developer has delivered to the City a duly executed Certificate of Completion and, thereafter, the City has determined that the applicable components of the Public Infrastructure as described in **Exhibit A** hereto (the “Infrastructure”) appear to have been constructed in accordance with the approved plans and specifications and the preliminary and final plat and has so notified the Developer in writing. As a result, via this Agreement, the Developer is conveying the Property to the City in accordance with the Site Improvement Performance Agreement, dated December 19, 2019. The acceptance of the Infrastructure does not take effect until the Saint Paul City Council accepts the Infrastructure via Resolution.

2. **Representations.** The Developer hereby represents, certifies, and promises to the City the following:

- (a) With respect to the Property, Developer has complied with the provision of the Redevelopment Agreement, dated December 19, 2019, including that the Property conveyed to the City in this Agreement is completely constructed, constructed in compliance with all applicable Standards as described in the St. Paul Department of Public Works’ Construction of Infrastructure by Private Developers Policy, is free of defects, and is free and clear of any encumbrances or liens.
- (b) A final walk-through inspection with appropriate City staff has been completed and any required corrective work (written punch list) determined through said walk-through or as determined under the normal and ordinary course of on-site observations by City staff or those hired by the City to complete such observations, has been completed.
- (c) The following documents respecting the Property are complete, accurate, and have been filed with the appropriate department(s) of the City of Saint Paul:
 - (i) Original, reproducible As-Built Plans acceptable to the Department of Public Works, City of Saint Paul are on file with said Department.
 - (ii) Certificate of Completion signed by Engineer of Record who is a licensed Professional Engineer with the State of Minnesota per Minnesota State Statute 326.

[Exhibit N to Site Improvement Performance Agreement (Ford Site)]

Exhibit G

Form of Completion Certificate



CITY OF SAINT PAUL DEPARTMENT OF PUBLIC WORKS

Certificate of Compliance

I hereby certify that work completed under this Ordinance Permit and materials provided for installation conform to the appropriate specifications and provisions of and the Department of Public Works, City of Saint Paul, Minnesota, *Standard Supplemental Specifications for Construction of Public Infrastructure by Private Developers Policy*, as amended, and that I am a duly Licensed Professional Engineer under the laws of the State of Minnesota.

Circuit D

Project Description

20210010305

Permit Number

Bel Humentamp

53081

1/6/2022

(Signature and License No.)

Date

Kimley-Horn and Associates Inc.

Organization (Print)

1/2012



CITY OF ST PAUL
 Department of Public Works
 25 West 4th Street
 1500 City Hall Annex
 Saint Paul, MN 55102

ORDINANCE PERMIT

OFFICE USE ONLY	
Application No.	_____
Application Date	_____
SPR File #	_____
Permit No.	_____

Type of Permit (select one only):

- | | | |
|---|--|---|
| <input type="checkbox"/> Base Roadway | <input type="checkbox"/> Roadway Sidewalks | <input type="checkbox"/> Sanitary Sewer Collection System |
| <input type="checkbox"/> Bridge | <input type="checkbox"/> Roadway Traffic | <input type="checkbox"/> Storm Sewer Collection System |
| <input type="checkbox"/> Retaining Wall | <input type="checkbox"/> Sanitary Drop Shaft | <input type="checkbox"/> Storm Sewer Treatment System |

Phase:

Location (Street On, From/To, and Adjacent Lots/Blocks):

Permit revised 1/27/22 by David Kuebler to include plan sheets associated with Falls Passage East lighting. A copy of the revised permit was provided to the Ryan/Project Paul team.

Description of Work: *[Include the description provided in the permit application and all subsequent amendments or revisions, which are hereby incorporated by reference.]*

Applicant Contact Person:	Contact Person Title:	Contact Person Telephone:	Contact Person Email:
Bond Co.:	Bond Amount:	Bond No.:	
Insurance Co.:	Insurance Certificate No.:		

Permit Conditions:

This permit is issued with the stipulation that the work of the permittee and related agents, employees and contractors shall conform in all respects to the Redevelopment Agreement (including all Legal Requirements as defined by Article 1), the City of Saint Paul Department of Public Works Ordinance Permit Process Document, and the Department of Public Works List of Applicable Standards & Specifications. The permit shall be available for display at the site referred to herein and shown to any Police Officer or Inspector upon demand and does not authorize or allow for interference with the work of any Contract made or to be made with the City of Saint Paul.

**THIS PERMIT MAY BE REVOKED AT ANY TIME
 BY THE DIRECTOR OF PUBLIC WORKS**

A PERMIT FOR THE ABOVE DESCRIBED CONSTRUCTION IS AUTHORIZED BY:		
<i>David Kuebler</i>	_____	_____
Signature	Title	Date
_____ Printed Name		

PERMIT NUMBER _____

**ITEMS TO BE COMPLETED PRIOR TO ACCEPTANCE OF INFRASTRUCTURE
AND RELEASE OF PERMIT**

Prior to acceptance of any infrastructure and release of City permits, the following items must be completed to the satisfaction of the City:

- Corrective (punch list) work completed;

- Original reproducible CAD and PDF as-built plans, signed by the Engineer of Record, provided to Public Works; Submittal of final copies of Metropolitan Council Environmental Services and MN Pollution Control Agency Permits (Sewer Extension, SAC Determination, etc.);

- Full compliance with project Quality Management Plan or other document(s) governing quality management and quality assurance;

- Documentation of compliance with all applicable City and non-City permit requirements, including, but not limited to: City Public Works Right-of-Way Office, Minnesota Pollution Control Agency, Capitol Region Watershed District, and National Pollution Discharge Elimination System permit requirements;

- NA Documentation of roadway materials at compaction of grading and base, plant mix design report, strength;

- NA Video of all sanitary sewer mains and laterals, storm sewer mains and laterals, and any structural BMP's (pipe galleries, draintile, sediment control structures, weir structures, etc.) installed under any permit, provided to the Public Works Sewer Division;

- NA Sewer Permit drawings for paving connections or stubs installed to service vertical development provided to Public Works, in addition to Private Service Lateral Permit Drawings;

- Documentation of Public Works notified for signal and lighting inspection of pole field layouts (staking), conduits and foundations installed, poles and wiring installed, and head positioning and phasing/detection verification (signals only);

- NA For infrastructure within parks: Documentation that Parks Department has been notified of completion status;

- NA All applicable operation and maintenance manuals provided to Public Works; and

- Certificate of Compliance signed and submitted to City by Engineer of Record.

RELEASE OF PERMIT:

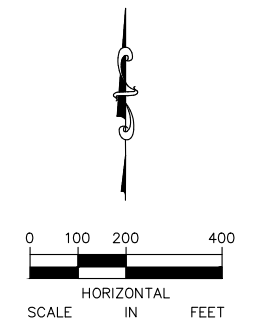
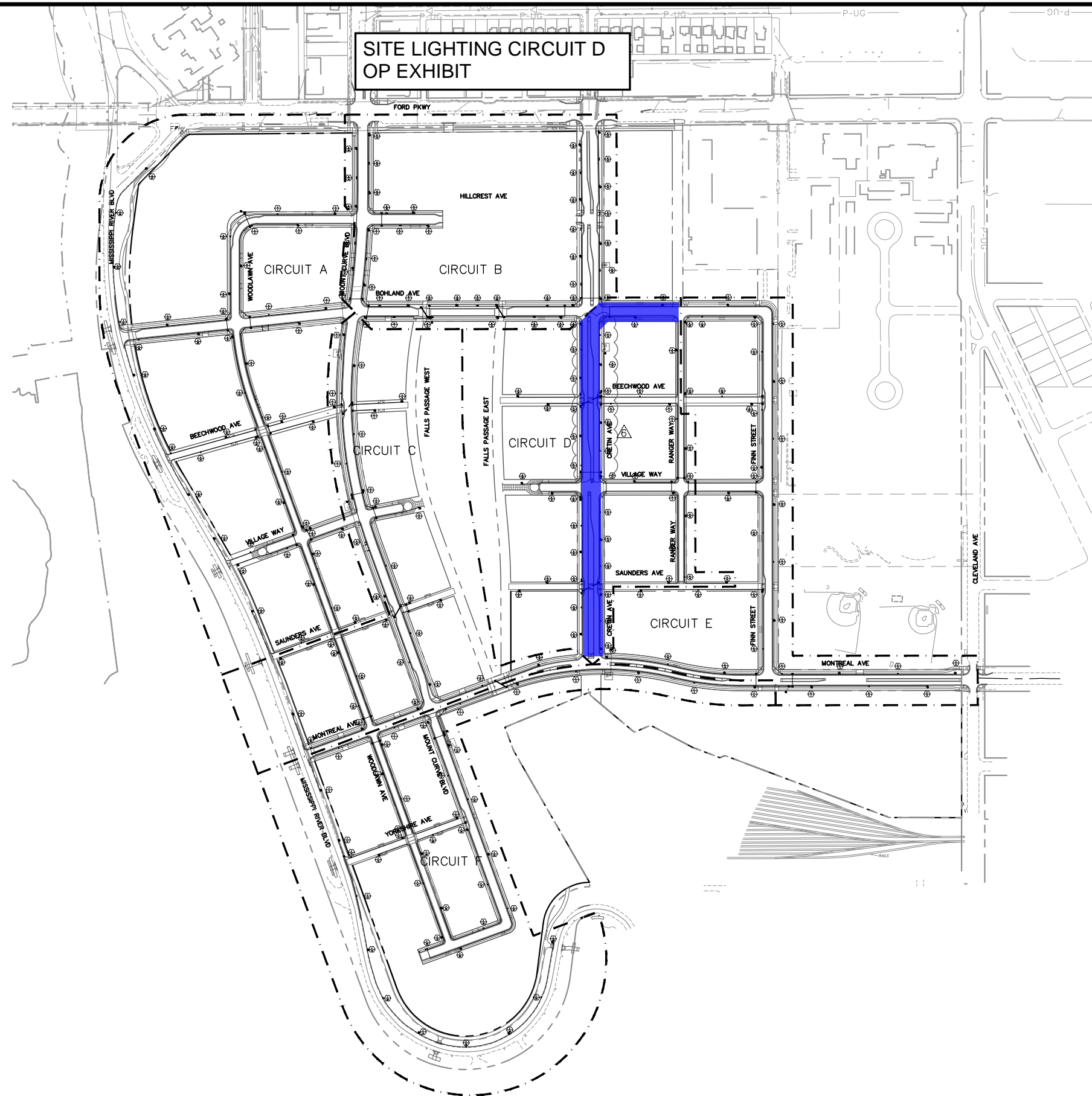
Permit No. _____ Council Res. No. _____ Permit Date _____

Release Authorized by _____ Title _____

**SITE LIGHTING CIRCUIT D
OP EXHIBIT**

LEGEND

--- LIGHTING CIRCUIT BOUNDARY



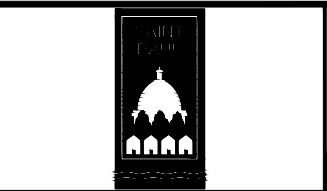
No.	Date	Revisions	App.
5	2/19/21	BULLETIN #5	JAH
6	4/2/21	BULLETIN #6	JAH

DRAWING NAME	Ford LightCircuits.dwg
DESIGNED BY:	KJC
DRAWN BY:	KJC
CHECKED BY:	JAH
DATE:	4/2/21
PROJECT NO.	160640016

Kimley»Horn
 767 EUSTIS STREET, SUITE 100, ST. PAUL, MN 55114
 PHONE: 651-645-4197
 WWW.KIMLEY-HORN.COM

I HEREBY CERTIFY THAT THIS PLAN, SPECIFICATION OR REPORT WAS PREPARED BY ME OR UNDER MY DIRECT SUPERVISION AND THAT I AM A DULY LICENSED PROFESSIONAL ENGINEER UNDER THE LAWS OF THE STATE OF MINNESOTA.

Joel A. Hinnenkamp
 JOEL A. HINNENKAMP, PE
 DATE: 4/2/21 MN LIC. NO. 53081

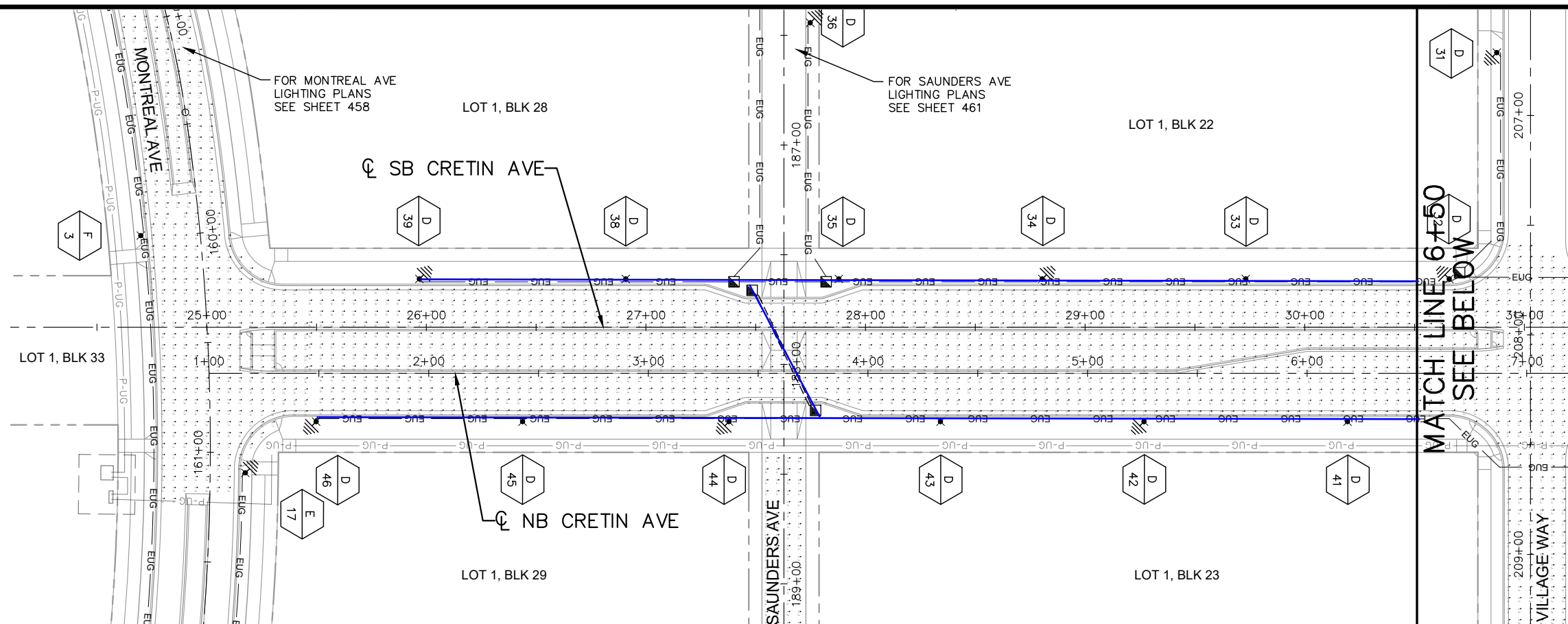


RYAN COMPANIES US, INC.
 FORD SITE REDEVELOPMENT
 CITY OF ST PAUL, MINNESOTA
 FINAL SITE PLAN

 LIGHTING CIRCUIT OVERVIEW

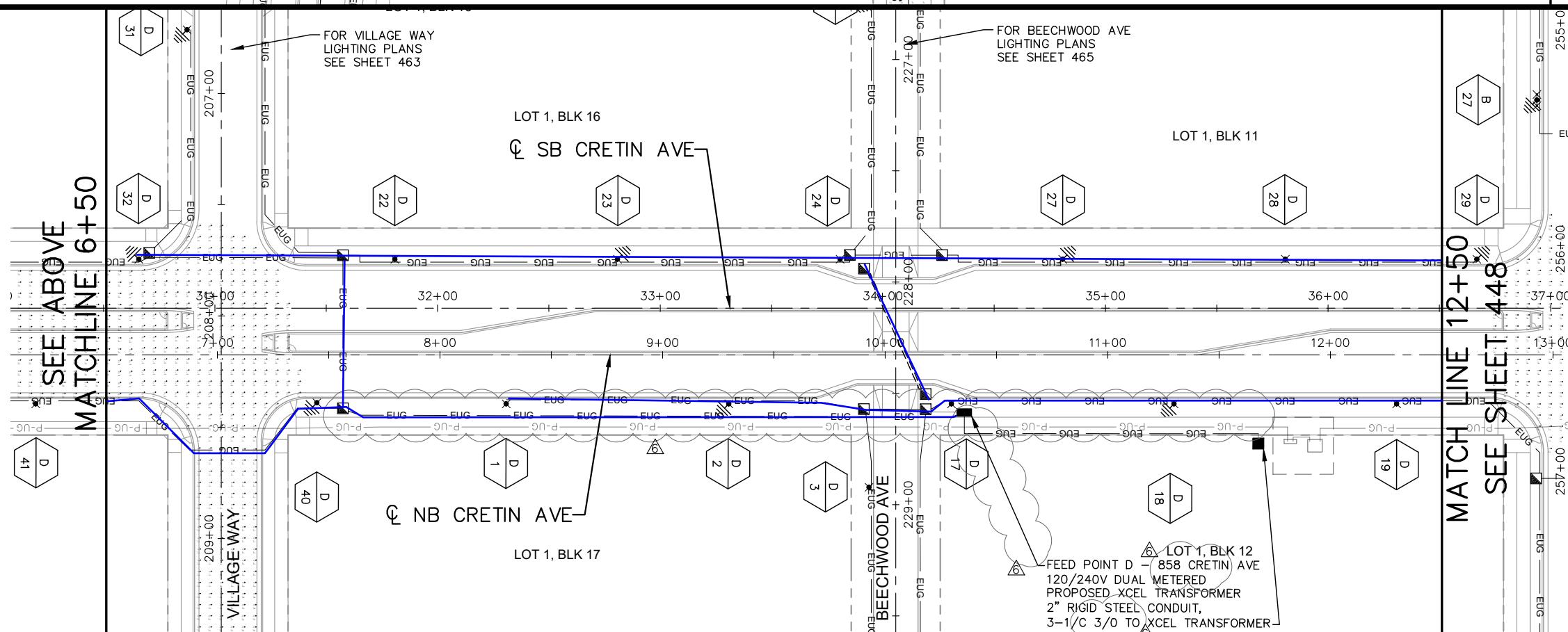
SHEET NO.
446

522



LEGEND

- ✕ LIGHTING UNIT TYPE SPECIAL 1
13' POLE, SINGLE LANTERN
70W LED LUMINAIRE
- ✕ LIGHTING UNIT TYPE SPECIAL 2
13' POLE, DOUBLE LANTERN
70W LED LUMINAIRE
- EUG 1.5" NON-METALLIC CONDUIT (2545)
3 - UNDERGROUND WIRE 1/C 6
1 - UNDERGROUND WIRE 1/C 14
- ==== 2" NON-METALLIC CONDUIT (2565)
1 - UNDERGROUND WIRE 1/C 14
(PROVIDE PULL CORD FOR FUTURE
FLASHER SYSTEM)
- P-UG XCEL POWER CABLE
- LIGHTING FEED CABINET
AND BASE (PLATE 5011)
- XCEL TRANSFORMER
- HANDHOLE (2545)
(17"X30"X12")
- ⊕ PERMANENT GROUND ROD
(25 OHMS OR LESS)
- XCEL PMH AND LBC
- X CIRCUIT
- XX POLE NUMBER



No.	Date	Revisions	App.
2	7/1/20	BULLETIN #2	JAH
5	2/19/21	BULLETIN #5	JAH
6	4/2/21	BULLETIN #6	JAH

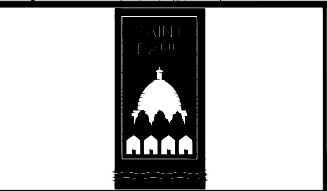
DRAWING NAME	Ford LightPlan NS.dwg
DESIGNED BY:	KJC
DRAWN BY:	KJC
CHECKED BY:	JAH
DATE:	4/2/21
PROJECT NO.	160640016

Kimley»Horn

767 EUSTIS STREET, SUITE 100, ST. PAUL, MN 55114
PHONE: 651-645-4197
WWW.KIMLEY-HORN.COM

I HEREBY CERTIFY THAT THIS PLAN, SPECIFICATION OR REPORT WAS PREPARED BY ME OR UNDER MY DIRECT SUPERVISION AND THAT I AM A DULY LICENSED PROFESSIONAL ENGINEER UNDER THE LAWS OF THE STATE OF MINNESOTA.

Joel A. Hinnenkamp
JOEL A. HINNENKAMP, PE
DATE: 4/2/21 MN LIC. NO. 53081

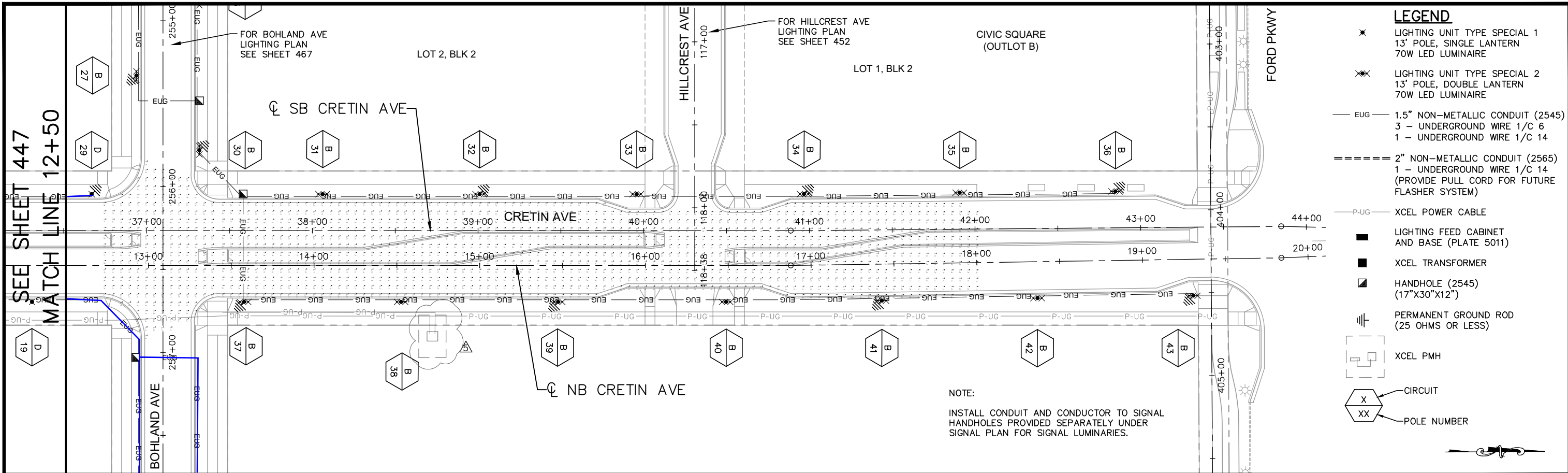


RYAN COMPANIES US, INC.
FORD SITE REDEVELOPMENT
CITY OF ST PAUL, MINNESOTA
FINAL SITE PLAN

NB CRETIN AVE
LIGHTING PLAN
STA. 0+00 TO STA. 12+50

SHEET NO.
447

522

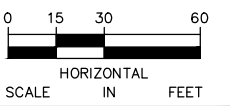


SEE SHEET 447
MATCH LINE 12+50

LEGEND

- ✕ LIGHTING UNIT TYPE SPECIAL 1
13' POLE, SINGLE LANTERN
70W LED LUMINAIRE
- ✕✕ LIGHTING UNIT TYPE SPECIAL 2
13' POLE, DOUBLE LANTERN
70W LED LUMINAIRE
- EUG — 1.5" NON-METALLIC CONDUIT (2545)
3 - UNDERGROUND WIRE 1/C 6
1 - UNDERGROUND WIRE 1/C 14
- ==== 2" NON-METALLIC CONDUIT (2565)
1 - UNDERGROUND WIRE 1/C 14
(PROVIDE PULL CORD FOR FUTURE
FLASHER SYSTEM)
- P-UG — XCEL POWER CABLE
- LIGHTING FEED CABINET
AND BASE (PLATE 5011)
- XCEL TRANSFORMER
- ▣ HANDHOLE (2545)
(17"X30"X12")
- ⊥ PERMANENT GROUND ROD
(25 OHMS OR LESS)
- XCEL PMH
- X CIRCUIT
- XX POLE NUMBER

NOTE:
INSTALL CONDUIT AND CONDUCTOR TO SIGNAL
HANDHOLES PROVIDED SEPARATELY UNDER
SIGNAL PLAN FOR SIGNAL LUMINARIES.



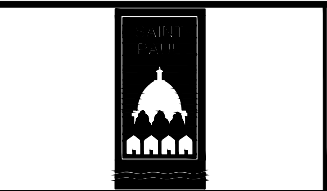
No.	Date	Revisions	App.
2	7/1/20	BULLETIN #2	JAH
5	2/19/21	BULLETIN #5	JAH

DRAWING NAME	
Ford LightPlan NS.dwg	
DESIGNED BY:	KJC
DRAWN BY:	KJC
CHECKED BY:	JAH
DATE:	02/19/21
PROJECT NO.	160640016

Kimley»Horn
767 EUSTIS STREET, SUITE 100, ST. PAUL, MN 55114
PHONE: 651-645-4197
WWW.KIMLEY-HORN.COM

I HEREBY CERTIFY THAT THIS PLAN, SPECIFICATION
OR REPORT WAS PREPARED BY ME OR UNDER MY
DIRECT SUPERVISION AND THAT I AM A DULY
LICENSED PROFESSIONAL ENGINEER UNDER THE
LAWS OF THE STATE OF MINNESOTA.

Joel A. Hinnenkamp
JOEL A. HINNENKAMP, PE
DATE: 02/19/21 MN LIC. NO. 53081

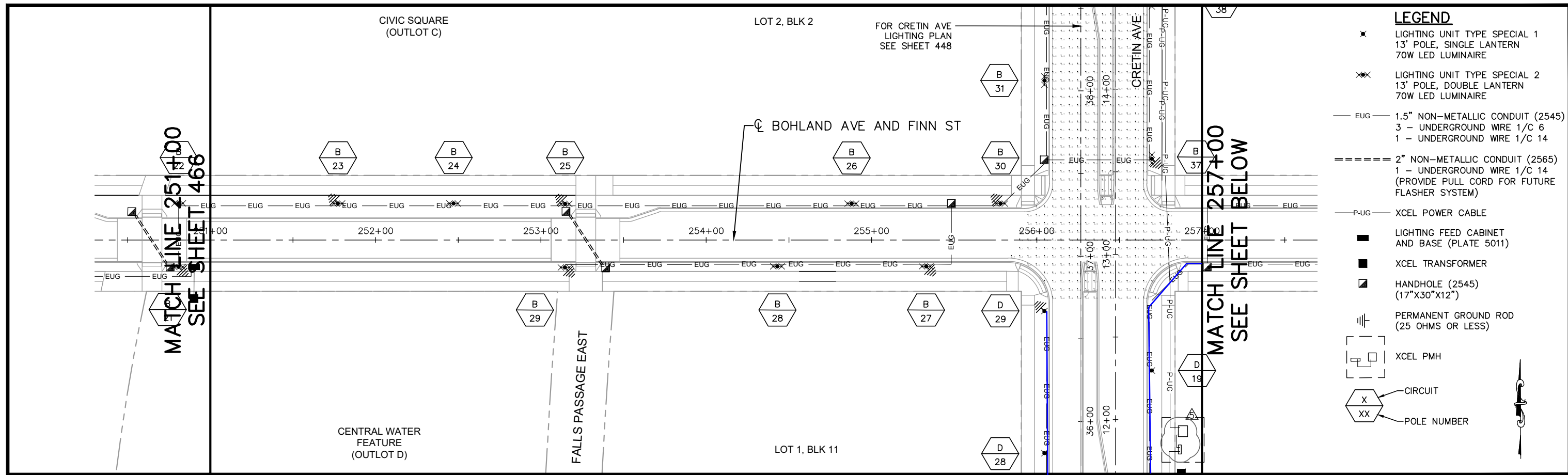


RYAN COMPANIES US, INC.
FORD SITE REDEVELOPMENT
CITY OF ST PAUL, MINNESOTA
PRELIMINARY SITE PLAN

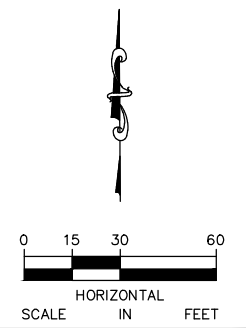
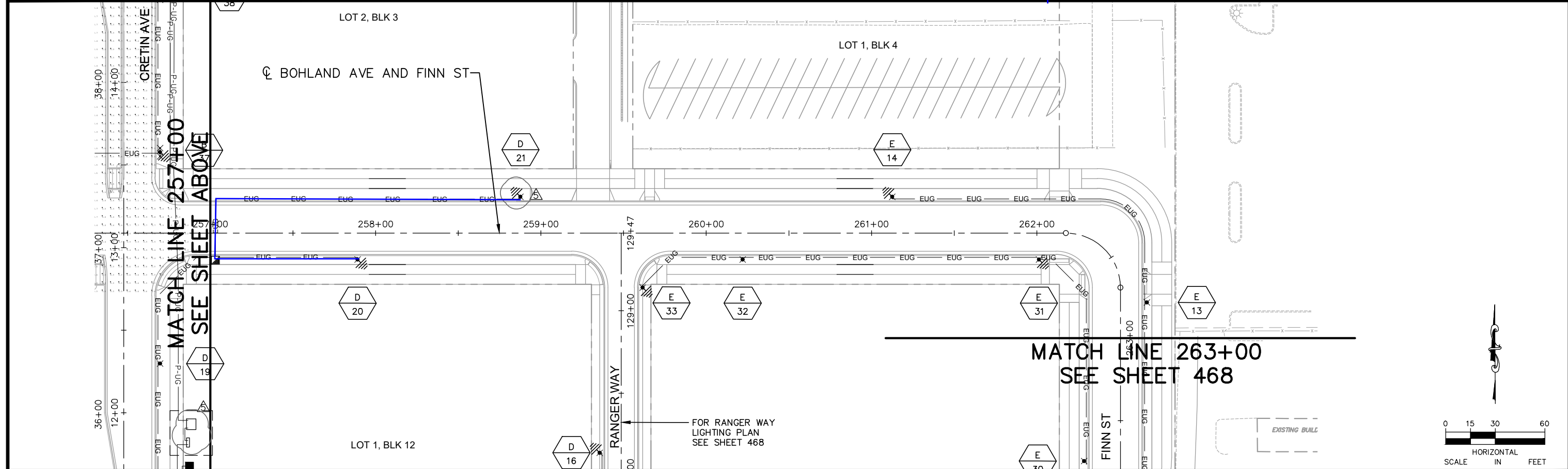
NB CRETIN AVE
LIGHTING PLAN
STA. 12+50 TO STA. 19+83.84

SHEET NO.
448

522



- LEGEND**
- ✱ LIGHTING UNIT TYPE SPECIAL 1
13' POLE, SINGLE LANTERN
70W LED LUMINAIRE
 - ✱✱ LIGHTING UNIT TYPE SPECIAL 2
13' POLE, DOUBLE LANTERN
70W LED LUMINAIRE
 - EUG — 1.5" NON-METALLIC CONDUIT (2545)
3 - UNDERGROUND WIRE 1/C 6
1 - UNDERGROUND WIRE 1/C 14
 - 2" NON-METALLIC CONDUIT (2565)
1 - UNDERGROUND WIRE 1/C 14
(PROVIDE PULL CORD FOR FUTURE FLASHER SYSTEM)
 - P-UG — XCEL POWER CABLE
 - LIGHTING FEED CABINET AND BASE (PLATE 5011)
 - XCEL TRANSFORMER
 - ▣ HANDHOLE (2545)
(17"X30"X12")
 - ⊕ PERMANENT GROUND ROD
(25 OHMS OR LESS)
 - ⊞ XCEL PMH
 - ⬡ X CIRCUIT
 - ⬡ XX POLE NUMBER



No.	Date	Revisions	App.
2	7/1/20	BULLETIN #2	JAH
4	9/2/20	BULLETIN #4	JAH
5	2/19/21	BULLETIN #5	JAH

DRAWING NAME	Ford LightPlan EW.dwg
DESIGNED BY:	KJC
DRAWN BY:	KJC
CHECKED BY:	JAH
DATE:	02/19/21
PROJECT NO.	160640016

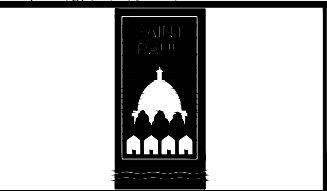
Kimley»Horn

767 EUSTIS STREET, SUITE 100, ST. PAUL, MN 55114
PHONE: 651-645-4197
WWW.KIMLEY-HORN.COM

I HEREBY CERTIFY THAT THIS PLAN, SPECIFICATION OR REPORT WAS PREPARED BY ME OR UNDER MY DIRECT SUPERVISION AND THAT I AM A DULY LICENSED PROFESSIONAL ENGINEER UNDER THE LAWS OF THE STATE OF MINNESOTA.

Joel A. Hinnenkamp

JOEL A. HINNENKAMP, PE
DATE: 02/19/21 MN LIC. NO. 53081



RYAN COMPANIES US, INC.
FORD SITE REDEVELOPMENT
CITY OF ST PAUL, MINNESOTA
PRELIMINARY SITE PLAN

BOHLAND AVE
LIGHTING PLAN
STA. 251+00 TO STA. 263+00

SHEET NO.
467

522



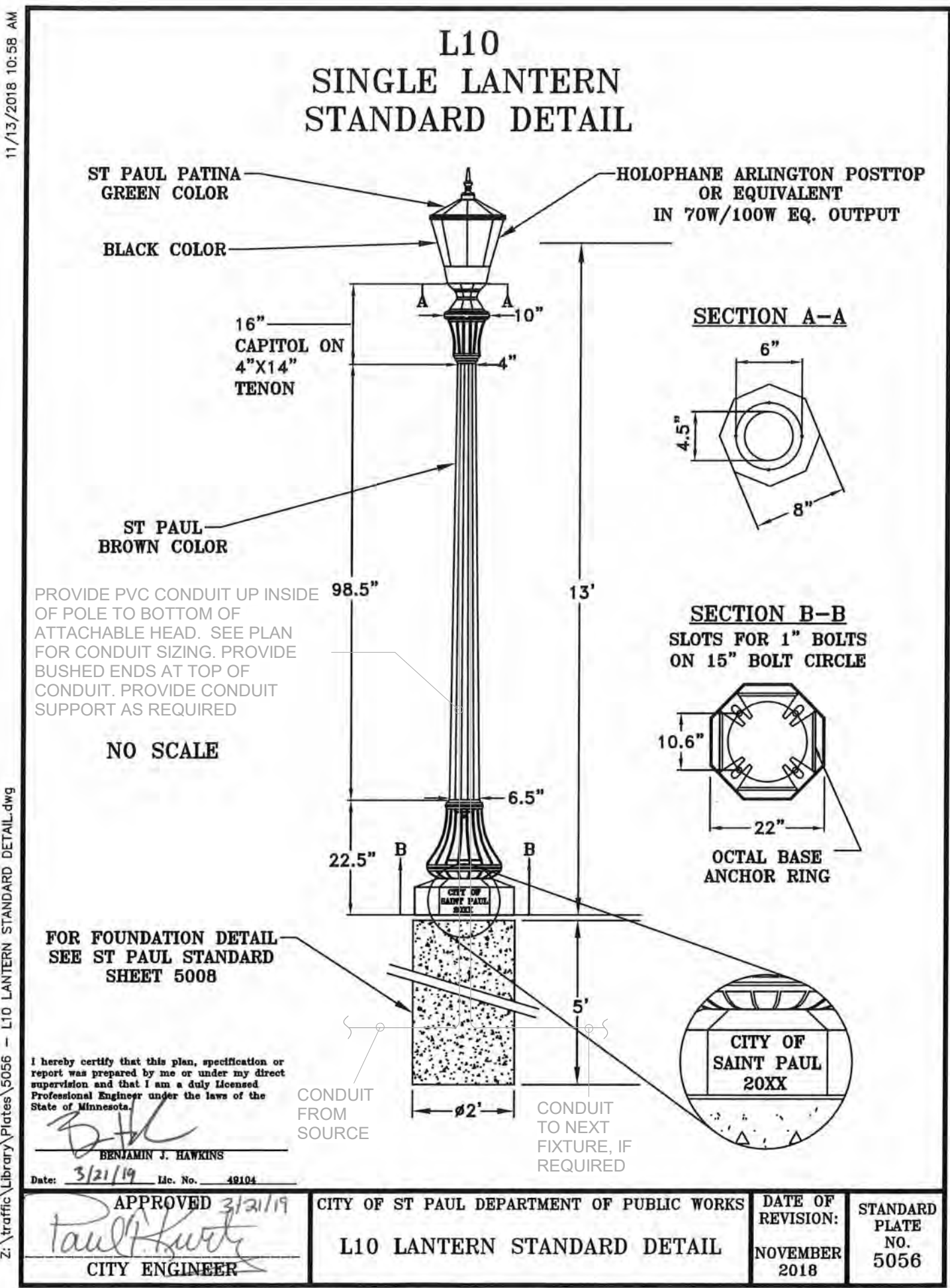
GENERAL NOTES - ELECTRICAL SITE PLAN

A. TYPE 'A' FIXTURES SHOWN HALFTONE AND ANNOTATED WITH "NIC" ARE NOT INCLUDED IN THIS SCOPE OF WORK, BUT ARE PLANNED IN ADJACENT AREAS AND CONTRIBUTE TO LIGHTING LEVELS SHOWN ON PHOTOMETRIC PLANS.

LUMINAIRE SCHEDULE - ELECTRICAL SITE PLAN

TYPE A:	DESC: POST-TOP AREA LIGHT MANUFACTURER: HOLOPHANE SERIES: ARLINGTON MODEL: ARE2-P40-27K-AS-PY5-CMC(ST PAUL PATINA GREEN(BLACK)-S. NOTE: PROVIDE WITH 13' ST. PAUL STANDARD POLE, BASE, AND FOUNDATION.
A1:	DESC: POST-TOP AREA LIGHT MANUFACTURER: HOLOPHANE SERIES: ARLINGTON NOTE: PROVIDE WITH 13' ST. PAUL STANDARD POLE, BASE, AND FOUNDATION.
B:	DESC: ADJUSTABLE IN-GRADE LIGHT, 7" DIAMETER MANUFACTURER: HYDREL SERIES: PARADOX 7 MODEL: PDX7 B 12LED WHT30K MVOLT FL FLC SR 34S
C:	DESC: ENCAPSULATED OUTDOOR RATED FLEXIBLE LED MANUFACTURER: LED LINEAR SERIES: VARIOLED FLEX MODEL: VENUX TC 3D W927 (LENGTHS PER PLANS) IP67 NOTE: PROVIDE WITH LED LINEAR, NON-DIMMABLE, IP65-RATED DRIVER SIZED TO SUPPORT ASSOCIATED LOAD
D:	DESC: LANDSCAPE LIGHT MANUFACTURER: MAXILED SERIES: MAXIPUNCH MODEL: 302 NOTE: PROVIDE WITH DRIVER SIZED TO SUPPORT ASSOCIATED LOAD AND MAXILED MAXILINK DMX/POWER INTEGRATOR. CONNECT TO CONTROLBRIGHT DMX CONTROLLER AND REMOTE ACCESS GATEWAY IN ELECTRICAL SERVICE AND DISTRIBUTION ASSEMBLY.
E:	DESC: LED POINT LIGHT, RECESSED IN HANDRAIL MANUFACTURER: WAGNER SERIES: LUMENPOD16 MODEL: LULF27K703 NOTE: PROVIDE WITH WAGNER, NON-DIMMABLE DRIVER SIZED TO SUPPORT ASSOCIATED LOAD AND WITH IN-GROUND, NEMA 3R ENCLOSURE. REFER TO MANUFACTURER'S INSTALLATION INSTRUCTIONS. SHOP DRAWING REVIEW REQUIRED.

NOTE: THIS SCHEDULE IS INTENDED TO BE A MASTER LUMINAIRE SCHEDULE FOR WORK IN PARK A, PARK C, OUTLOT C, AND OUTLOT D. NOT ALL LUMINAIRES LISTED IN THIS SCHEDULE ARE INCLUDED IN EVERY SCOPE OF WORK.



1 OVERALL ELECTRICAL PLAN - OUTLOT D
1" = 200'-0"

2 TYPICAL AREA LIGHT DETAIL (FOR INFORMATION ONLY)

REVISION SCHEDULE			
ISSUE NO.	DATE	REVISIONS	APP.
1	09/02/2020	BULLETIN #1	

BULLETIN #1

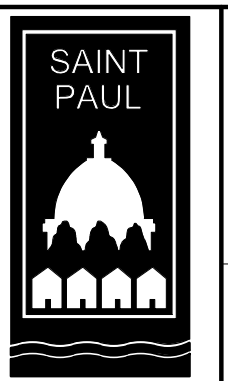
DRAWN BY: WN
CHECKED BY: WN
DATE: 09/02/2020
PROJECT NO. 20009

CONFLUENCE

530 N THIRD ST, SUITE 120, MINNEAPOLIS, MN 55102
PH: 612.333.3702 FAX: 515.288.8359
www.thinkconfluence.com

I HEREBY CERTIFY THAT THIS PLAN, SPECIFICATION, OR REPORT WAS PREPARED BY ME OR UNDER MY DIRECT SUPERVISION, AND THAT I AM A DULY LICENSED PROFESSIONAL ENGINEER UNDER THE LAWS OF THE STATE OF MINNESOTA.

PRINTED NAME: Willow Nichols
SIGNATURE: *Willow Nichols*
DATE: 08/10/20 LICENSE NO. 49864



RYAN COMPANIES US, INC
FORD SITE REDEVELOPMENT
CITY OF SAINT PAUL, MN
BULLETIN #1

ELECTRICAL SITE PLAN

SHEET NO.
**OUTLOT D
E100**

9/2/2020 8:00:40 PM C:\Users\ElizabethM\baubani\Documents\Ford Plant Site MEP R19_elizabethROETP.rvt

9/2/2020 8:01:08 PM C:\Users\ElizabethMauban\Documents\Ford Plant Site MEP R19_e11zabethRQETP.rvt



GENERAL NOTES - ELECTRICAL SITE PLAN

A. TYPE 'A' FIXTURES SHOWN HALFTONE AND ANNOTATED WITH "NIC" ARE NOT INCLUDED IN THIS SCOPE OF WORK, BUT ARE PLANNED IN ADJACENT AREAS AND CONTRIBUTE TO LIGHTING LEVELS SHOWN ON PHOTOMETRIC PLANS.

KEYED NOTES - ELECTRICAL SITE PLAN

1. CIRCUIT NOTED CORRESPONDS TO CIRCUIT AT CITY FEED POINT. CONNECT FIXTURE TO CITY ELECTRICAL DISTRIBUTION. COORDINATE WITH INFRASTRUCTURE LIGHTING PLANS.

1 ELECTRICAL PLAN - AREA 3
1" = 30'-0"

REVISION SCHEDULE			
ISSUE NO.	DATE	REVISIONS	APP.
1	09/02/2020	BULLETIN #1	

BULLETIN #1

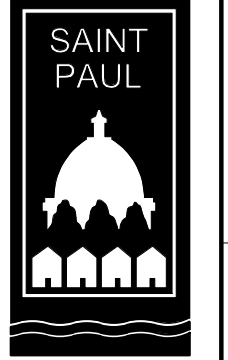
DRAWN BY: WN
 CHECKED BY: WN
 DATE: 09/02/2020
 PROJECT NO. 20009

CONFLUENCE

530 N THIRD ST, SUITE 120, MINNEAPOLIS, MN 55102
 PH: 612.333.3702 FAX: 515.288.8359
 www.thinkconfluence.com

I HEREBY CERTIFY THAT THIS PLAN, SPECIFICATION, OR REPORT WAS PREPARED BY ME OR UNDER MY DIRECT SUPERVISION, AND THAT I AM A DULY LICENSED PROFESSIONAL ENGINEER UNDER THE LAWS OF THE STATE OF MINNESOTA.

PRINTED NAME: Willow Nichols
 SIGNATURE: *Willow Nichols*
 DATE: 08/10/20 LICENSE #: 49864

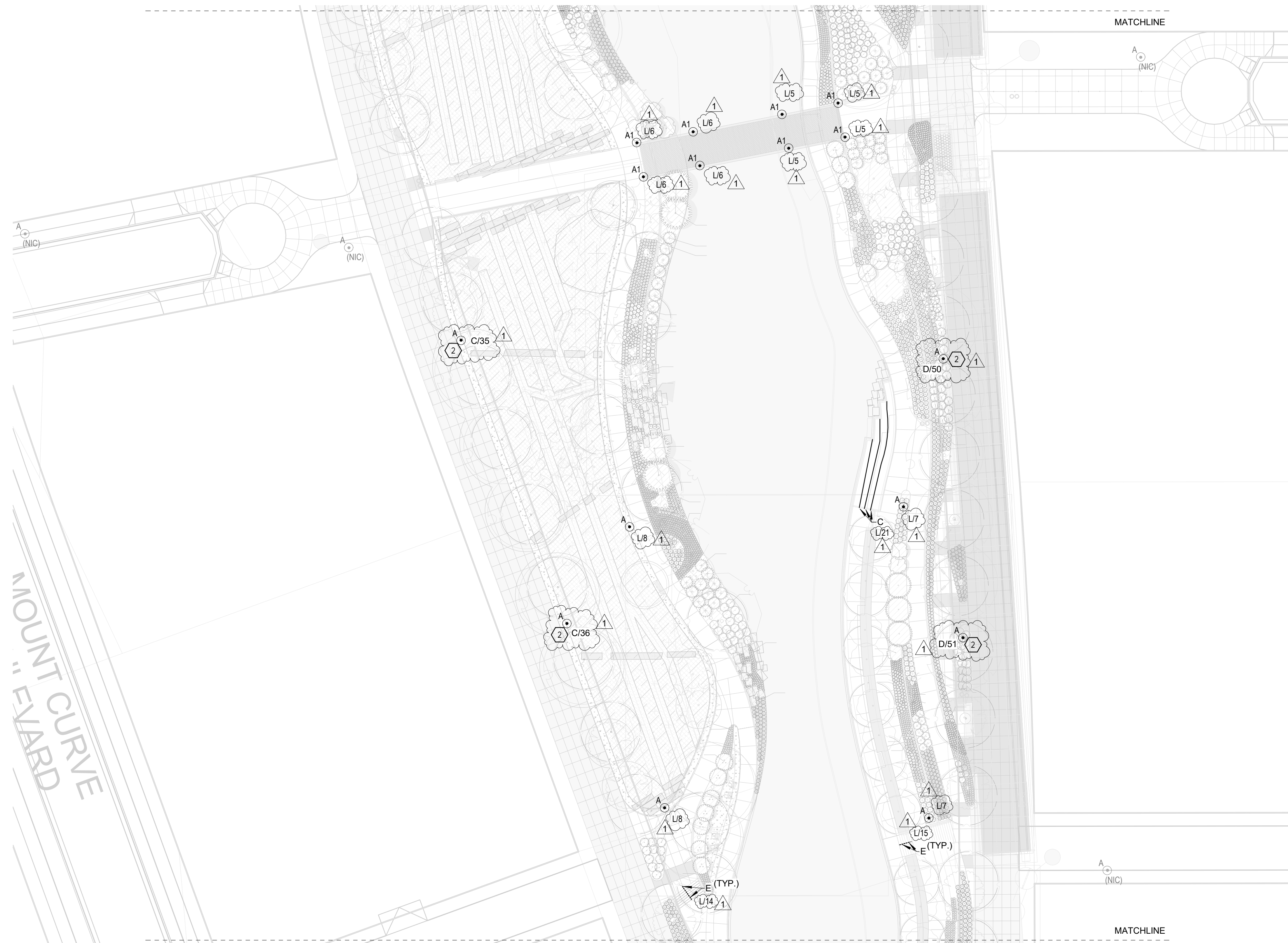


RYAN COMPANIES US, INC
 FORD SITE REDEVELOPMENT
 CITY OF SAINT PAUL, MN
 BULLETIN #1

ELECTRICAL OUTLOT D PLAN

SHEET NO.
**OUTLOT D
 E102**





GENERAL NOTES - ELECTRICAL SITE PLAN

A. TYPE 'A' FIXTURES SHOWN HALFTONE AND ANNOTATED WITH "(NIC)" ARE NOT INCLUDED IN THIS SCOPE OF WORK, BUT ARE PLANNED IN ADJACENT AREAS AND CONTRIBUTE TO LIGHTING LEVELS SHOWN ON PHOTOMETRIC PLANS.

KEYED NOTES - ELECTRICAL SITE PLAN

1. LOW VOLTAGE/LED LIGHTING FIXTURE POWER SUPPLY/DRIVER IN NEMA 3R ENCLOSURE. LOCATE IN PLANTING OR LAWN AREA - COORDINATE WITH LANDSCAPE ARCHITECT PRIOR TO INSTALLATION.
2. CIRCUIT NOTED CORRESPONDS TO CIRCUIT AT CITY FEED POINT. CONNECT FIXTURE TO CITY ELECTRICAL DISTRIBUTION. COORDINATE WITH INFRASTRUCTURE LIGHTING PLANS.

1 ELECTRICAL PLAN - AREA 4
1" = 30'-0"

REVISION SCHEDULE			
ISSUE NO.	DATE	REVISIONS	APP.
1	09/02/2020	BULLETIN #1	

BULLETIN #1

DRAWN BY: WN
 CHECKED BY: WN
 DATE: 09/02/2020
 PROJECT NO. 20009

CONFLUENCE

530 N THIRD ST, SUITE 120, MINNEAPOLIS, MN 55102
 PH: 612.333.3702 FAX: 515.288.8359
 www.thinkconfluence.com

I HEREBY CERTIFY THAT THIS PLAN, SPECIFICATION, OR REPORT WAS PREPARED BY ME OR UNDER MY DIRECT SUPERVISION, AND THAT I AM A DULY LICENSED PROFESSIONAL ENGINEER UNDER THE LAWS OF THE STATE OF MINNESOTA.

PRINTED NAME: Willow Nichols
 SIGNATURE: *WN*
 DATE: 08/10/20 LICENSE # 49864



VICTUS ENGINEERING

817 FIFTH AVENUE SOUTH, SUITE 400
 MINNEAPOLIS, MINNESOTA 55404
 TELEPHONE: 415-314-7862



RYAN COMPANIES US, INC

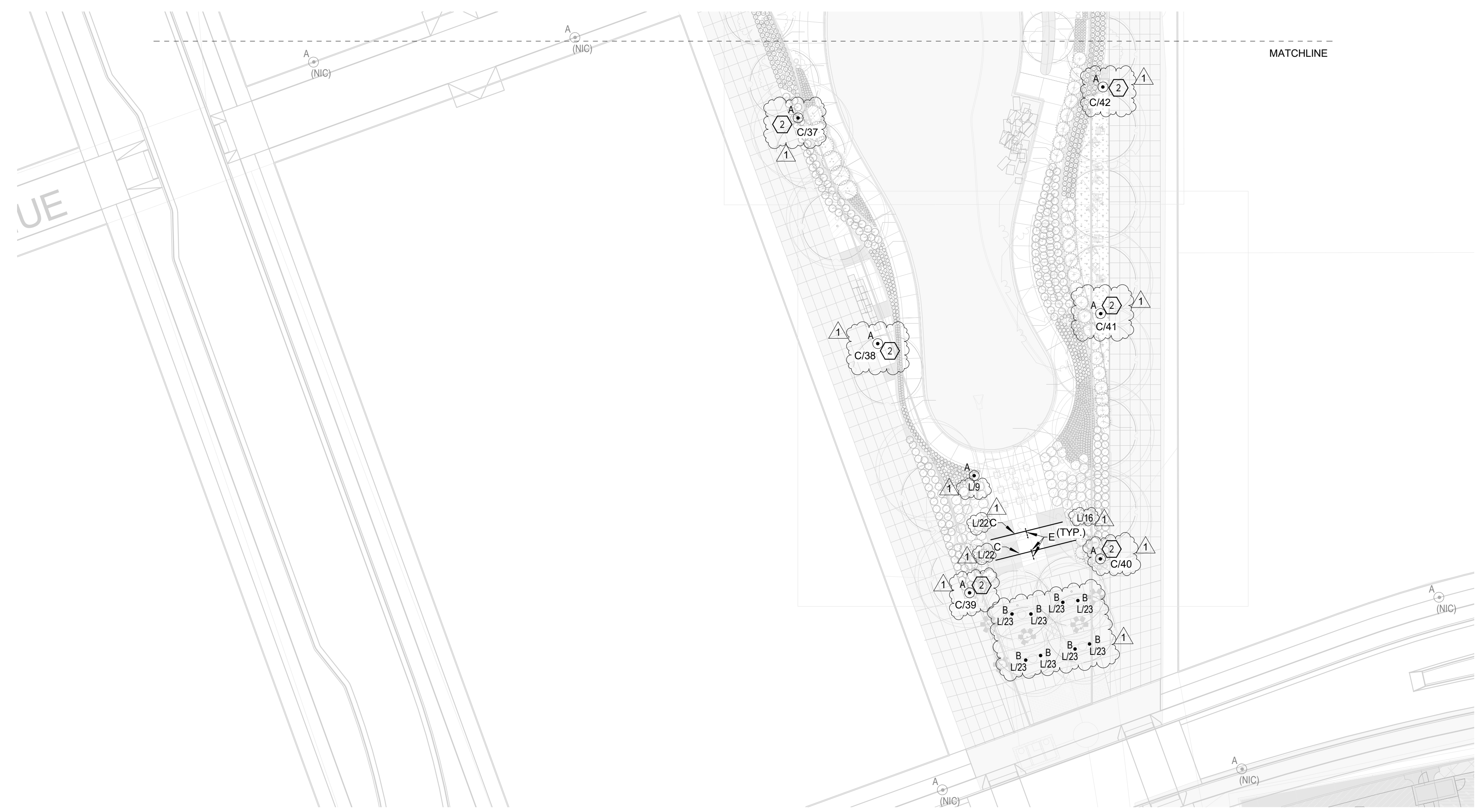
FORD SITE REDEVELOPMENT
 CITY OF SAINT PAUL, MN
 BULLETIN #1

ELECTRICAL OUTLOT D PLAN

SHEET NO.
**OUTLOT D
 E103**

9/2/2020 8:01:19 PM C:\Users\ElizabethM\bauban\Documents\Ford Plant Site MEP R19_e103\ElizabethRQETP.rvt

9/2/2020 8:01:27 PM C:\Users\ElizabethM\Documents\Ford Plant Site MEP R19_e11zabethRQETP.rvt



GENERAL NOTES - ELECTRICAL SITE PLAN

A. TYPE 'A' FIXTURES SHOWN HALFTONE AND ANNOTATED WITH "(NIC)" ARE NOT INCLUDED IN THIS SCOPE OF WORK, BUT ARE PLANNED IN ADJACENT AREAS AND CONTRIBUTE TO LIGHTING LEVELS SHOWN ON PHOTOMETRIC PLANS.

KEYED NOTES - ELECTRICAL SITE PLAN

1. LOW VOLTAGE/LED LIGHTING FIXTURE POWER SUPPLY/DRIVER IN NEMA 3R ENCLOSURE. LOCATE IN PLANTING OR LAWN AREA - COORDINATE WITH LANDSCAPE ARCHITECT PRIOR TO INSTALLATION.
2. CIRCUIT NOTED CORRESPONDS TO CIRCUIT AT CITY FEED POINT. CONNECT FIXTURE TO CITY ELECTRICAL DISTRIBUTION, COORDINATE WITH INFRASTRUCTURE LIGHTING PLANS.

1 ELECTRICAL PLAN - AREA 5
1" = 30'-0"

REVISION SCHEDULE			
ISSUE NO.	DATE	REVISIONS	APP.
1	09/02/2020	BULLETIN #1	

BULLETIN #1

DRAWN BY: WN
 CHECKED BY: WN
 DATE: 09/02/2020
 PROJECT NO. 20009

CONFLUENCE

530 N THIRD ST, SUITE 120, MINNEAPOLIS, MN 55102
 PH: 612.333.3702 FAX: 515.288.8359
 www.thinkconfluence.com

I HEREBY CERTIFY THAT THIS PLAN, SPECIFICATION, OR REPORT WAS PREPARED BY ME OR UNDER MY DIRECT SUPERVISION, AND THAT I AM A DULY LICENSED PROFESSIONAL ENGINEER UNDER THE LAWS OF THE STATE OF MINNESOTA.

PRINTED NAME: Willow Nichols
 SIGNATURE: *WN*
 DATE: 08/10/20 LICENSE # 49864



RYAN COMPANIES US, INC
 FORD SITE REDEVELOPMENT
 CITY OF SAINT PAUL, MN
 BULLETIN #1

ELECTRICAL OUTLOT D PLAN

SHEET NO.
**OUTLOT D
 E104**

