

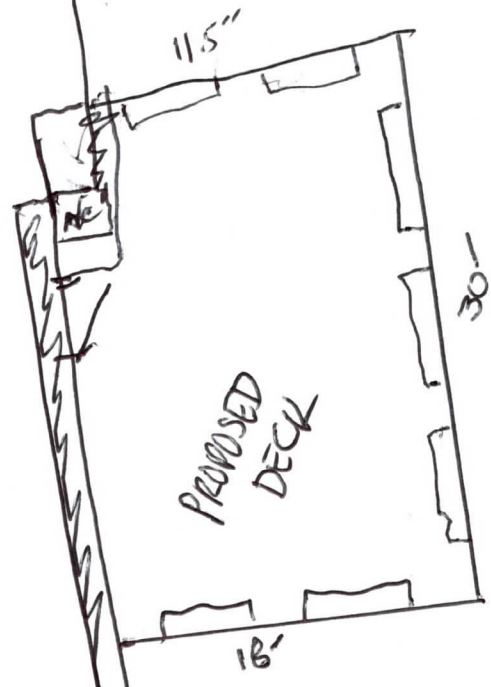
VICTORIA

RANDOLPH

DECK SIZE

$$\begin{array}{r} 11.5 \times 30 = 345 \\ 6.5 \times 21 = 130 \\ \hline 475 \text{ sf} \end{array}$$

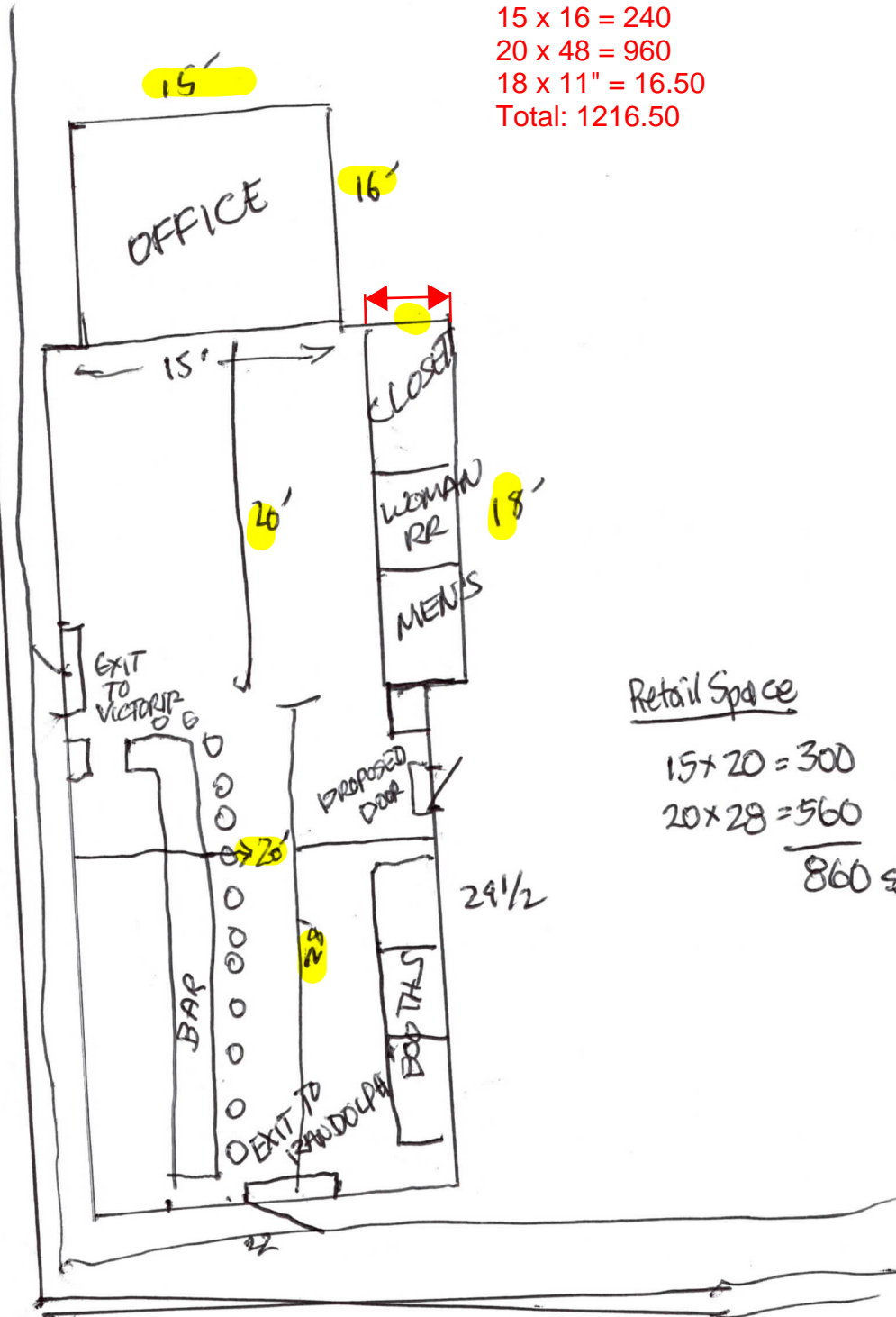
NO TABLES/CHAIR
BENCHES & FLOWER BOXES



SPOT BAR
DECK
SIZE

15 x 16 = 240
 20 x 48 = 960
 18 x 11 = 16.50
 Total: 1216.50

VICTORIA



Retail Space

15 x 20 = 300
 20 x 28 = 560
860 sf

RANDOLPH

SPOT BAR INTERIOR